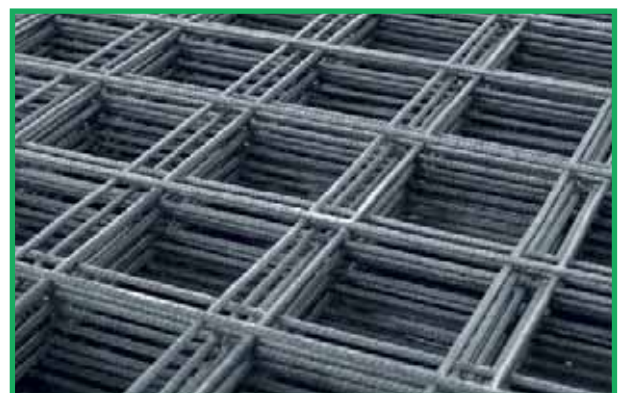
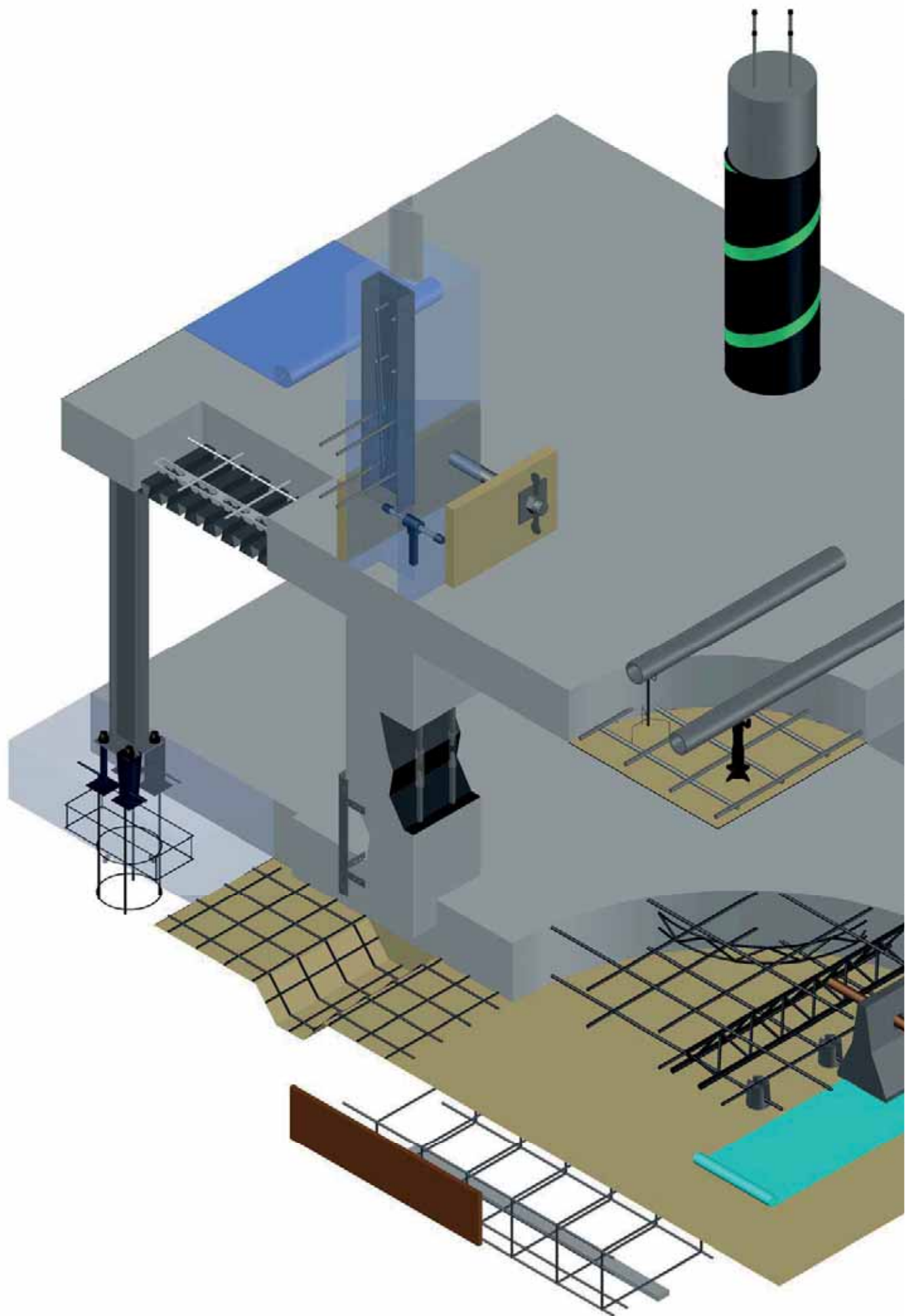


## Product Guide

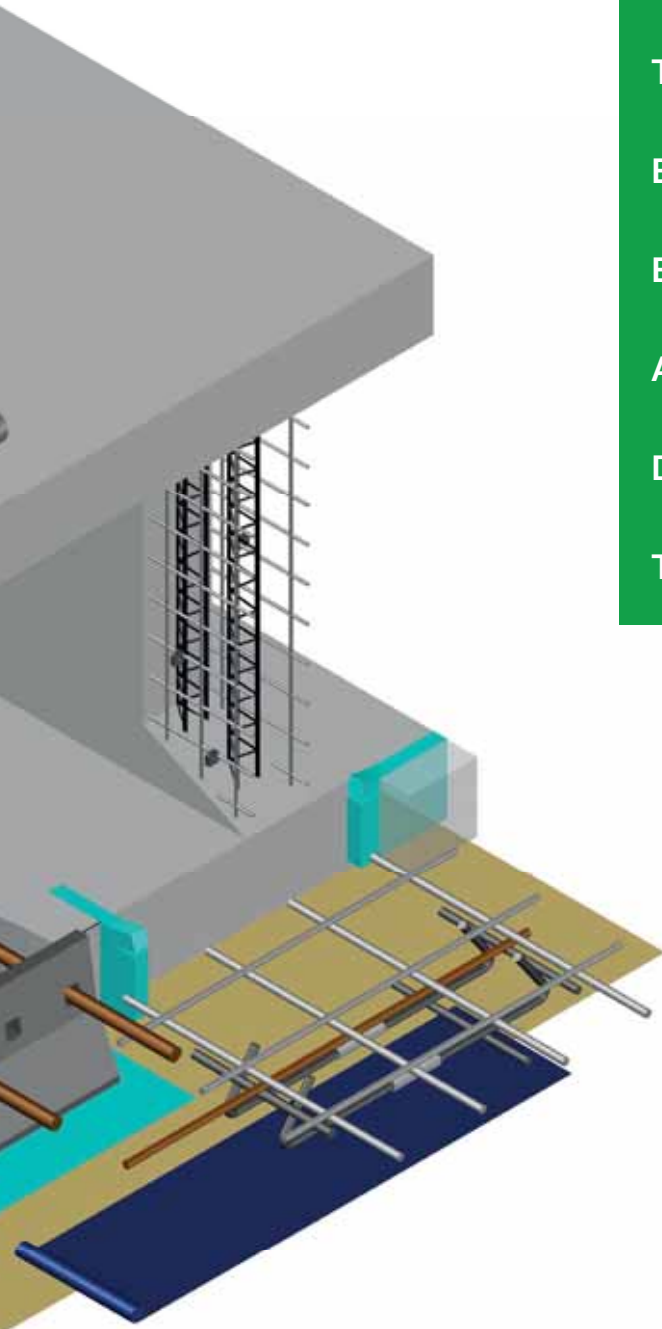
- ⦿ Contractor detailing service
- ⦿ Bar and fabric products
- ⦿ Custom engineered mesh
- ⦿ Carpet and pre-fabricated reinforcement
- ⦿ Reinforcement accessories





# Contents

Introduction.....	2
Sustainability .....	3
Certification .....	4
True Cost of Reinforcement.....	5
BIM.....	6
Bar & Fabric Products .....	7
Accessories.....	18
Deliveries.....	75
Terms and Conditions .....	76

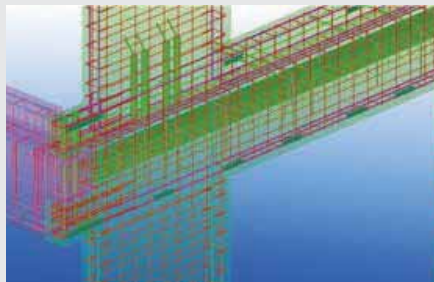


# Introduction



Founded in 1908, BRC is the UK's largest supplier of steel reinforcement and associated products for concrete. With a network of strategically placed

manufacturing locations, we are able to meet all your requirements regardless of the size of the project.



All the steel reinforcement supplied by BRC, is sourced from within the UK and has a recycled content of at least 98%. All steel reinforcement manufactured by BRC, complies with the highest quality and

sustainability standards and can be found in iconic projects such as the second Severn Crossing, the Millenium Stadium , Wembley Stadium, Merseylink Gateway, Falkirk Wheel and Aberdeen Western Peripheral Route.



# Sustainability

At BRC, we always aim to reduce the environmental impacts of our operating processes.

We only source our reinforcing steel from within the UK and we ensure that our reinforcing steels main raw materials have also been responsibly sourced from within the UK.

Our reinforcing steel is produced via the Electric Arc Furnace (EAF) method, giving a 98% recycled content to the finished product.

Producing steel by utilising this method can reduce the carbon footprint by nearly

four times when compared to the Basic Oxygen Steelmaking (BOS) process.

For a final stamp of confidence 'UK' is rolled onto the surface of all our bars to ensure quick and easy identification on site.

With BRC's robust supply chain traceability and favourable carbon footprint, we are in a strong position to ensure you, our customer, meet all the requirements related to modern construction projects.



100% UK sourced with a 98% recycled content.



From our supplier to our Depots, our reinforcing steel travels on average 173 road miles. We are constantly working on ways to minimise the impact of transport by using rail wherever possible.






Our reinforcing steel has a carbon footprint that is 4 times less damaging to the environment than some imported steel.



# Certification

BRC is proud to be at the forefront in supplying products that are certified to meet many of industries most exacting standards in regard to Quality, Sustainability, and Responsible Sourcing.

As a helpful guide we have provided an explanation to some of the certificates and why they are important.

 	<p>Eco-Reinforcement is a scheme developed using BRE's BES 6001 – Framework for Responsible Sourcing for reinforcing steel supply chains.</p> <p>This rigorous and market leading certification allows BRC to trace it's reinforcing steel products to the raw materials to ensure that our customers are truly confident as to the origin and supply chain of their delivered product.</p>
	<p>BRC are fully CARES approved with respect to product conformance, giving customer confidence to the quality of the finished product and the processes that have been undertaken internally within BRC to maintain that quality.</p>



# True Cost of Reinforcement

At BRC, we do our utmost to help lower our customers overall project costs and deliver on time. A successful project for you, is a successful project for us. Through a series of onsite time and motion studies we can identify the real costs associated with reinforcement. These studies aim to highlight areas where waste activities are occurring. We then look to adapt our service to provide bespoke solutions to these needs.

The study works through mapping various activities related directly with steel fixing and offloading. The type of work and time taken to perform is then categorized into the sections below:

- Indirect work
- Internal Logistics
- Planning
- Re-Work
- Un-used time
- Interruptions and waiting

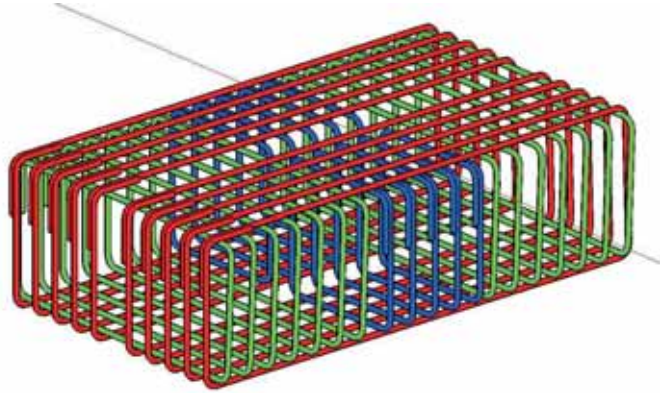
For more information on the True Cost of Reinforcement please contact our true cost projects coordinator on:

**Email:** [truecost@brc.ltd.uk](mailto:truecost@brc.ltd.uk)  
**Tel:** 01623 555111



# BIM

Full 3D Rebar Detailing  
 Lean & Data Rich Models  
 Buildability Reviews  
 Clash Detection  
 True Digital Information



BRC believe in open sharing of all information, graphical or non-graphical and in full collaboration on all design, technical and administrative issues.

We adopt the view of non-adversarial attitudes towards all project team members and companies to promote a more efficient build overall.

BRC intends to remain a market leader in the reinforcement sector by ensuring the latest technologies are always in place and operational.

Through the use of Tekla's 3D modelling package we are able to provide you with a digital model of the reinforced concrete structures within your project.

Unlike traditional 2D drawings our 3D models can assist in identifying clashes of rebar at the design stage. These issues can then be resolved in real time helping our customers make real savings.

Once designed we can simply extract the bar bending schedules from the Tekla model and export to our production department.



For more information on our BIM packages and for a competitive quote please contact our BIM team:

**Email:** [bim@brc.ltd.uk](mailto:bim@brc.ltd.uk)

**Tel:** 01623 555111



# Bar & Fabric Products



## Reinforcing Steel Bar

High yield reinforcing bar to BS4449:2005 in diameters 10-40mm.

50mm is a non preferred size, available to special order.

98% recycled content, UK sourced material.

Prefabricated reinforcement includes Beams, Cages, Mats & Pile Caps. Call your nearest Depot for more information.

All BRC reinforcement is CARES approved

All cut and bent reinforcement conforms to BS 8666:2005



## Carpet Reinforcement

BRC are able to offer both welded and non welded roll mats, reinforcing bars supplied on a roll to provide efficient laying of reinforcing steel to large areas.

Using this method can reduce your installation time by up to 80% giving you time and resource savings.

# Bar & Fabric Products

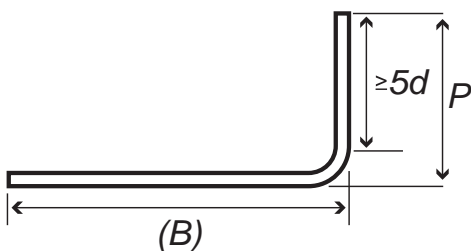
## Reinforcement Shape Codes

 $L=A$ <b>SHAPE CODE 00</b>	 $L=A$ <b>SHAPE CODE 01</b>	 $L=A+(B)-0.5r-d$ <b>SHAPE CODE 11</b>	 $L=A+(B)-0.43R-1.2d$ <b>SHAPE CODE 12</b>	 $L=A+0.57B+(C)-1.6d$ <b>SHAPE CODE 13</b>
 $L=A+(C)-4d$ <b>SHAPE CODE 14</b>	 $L=A+(C)$ <b>SHAPE CODE 15</b>	 $L=A+B+(C)-r-2d$ <b>SHAPE CODE 21</b>	 $L=A+B+C+(D)-1.5r-3d$ <b>SHAPE CODE 22</b>	 $L=A+B+(C)-r-2d$ <b>SHAPE CODE 23</b>
 $L=A+B+(C)$ <b>SHAPE CODE 24</b>	 $L=A+B+(E)$ <b>SHAPE CODE 25</b>	 $L=A+B+(C)$ <b>SHAPE CODE 26</b>	 $L=A+B+(C)-0.5r-d$ <b>SHAPE CODE 27</b>	 $L=A+B+(C)-0.5r-d$ <b>SHAPE CODE 28</b>
 $L=A+B+(C)-r-2d$ <b>SHAPE CODE 29</b>	 $L=A+B+C+(D)-1.5r-3d$ <b>SHAPE CODE 31</b>	 $L=A+B+C+(D)-1.5r-3d$ <b>SHAPE CODE 32</b>	 $L=2A+1.7B+2(C)-4d$ <b>SHAPE CODE 33</b>	 $L=A+B+C+(E)-0.5r-d$ <b>SHAPE CODE 34</b>
 $L=A+B+C+(E)-0.5r-d$ <b>SHAPE CODE 35</b>	 $L=A+B+C+(D)-r-2d$ <b>SHAPE CODE 36</b>	 $L=A+B+C+D+(E)-2r-4d$ <b>SHAPE CODE 41</b>	 $L=A+B+C+D+(E)-2r-4d$ <b>SHAPE CODE 44</b>	 $L=A+2B+C+(E)$ <b>SHAPE CODE 46</b>
 $L=2A+B+2(C)+1.5r-3d$ <b>SHAPE CODE 47</b>	 $L=2(A+B+(C))-2.5r-5d$ <b>SHAPE CODE 51</b>	 $L=A+B+C+D+2(E)-2.5r-5d$ <b>SHAPE CODE 56</b>	 $L=2A+3B+2(C)-3r-6d$ <b>SHAPE CODE 63</b>	 $L=A+B+C+2D+E+(F)-3r-6d$ <b>SHAPE CODE 64</b>
 $L=A$ <b>SHAPE CODE 67</b>	 $L=\pi(A-d)+B$ <b>SHAPE CODE 75</b>	 $L=C\pi(A-d)$ <b>SHAPE CODE 77</b>	 $L=A+2B+C+(D)-2r-4d$ <b>SHAPE CODE 98</b>	

All other shapes are Shape Code 99 and require fully dimensioned sketches.



### Table of minimum dimensions



Nominal size	Minimum radius for scheduling	Minimum diameter for bending former	Minimum end projection (P)	
			General (min. 5d straight)	Links where bend <150° (min. 10d straight)
6*	12	24	110	110
8*	16	32	115	115
10	20	40	120	130
12	24	48	125	160
16	32	64	130	210
20	70	140	190	290
25	87	175	240	365
32	112	224	305	465
40	140	280	380	580
50*	175	350	475	725

\*6mm, 8mm & 50mm are non-preferred sizes available to special order

# Bar & Fabric Products

## Reinforcement Bar Technical Data

### Properties of high yield bars

Size (mm)	10	12	16	20	25	32	40
Dims (max O/A mm)	12	14	19	23	29	37	46
Mass (kg per m)	0.616	0.888	1.579	2.466	3.854	6.313	9.864
Metres per tonne	1623	1126	633	405	259	158	101

### Radius Bending

Reinforcement to be formed to a radius exceeding that specified in the table below shall be supplied straight. The required curvature may be obtained during placing. For shapes with straight and curved

lengths (e.g. shape codes 13 and 33) the largest practical radius for the production of a continuous curve is 200mm, and for larger radii the curve may be produced by a series of short straight sections.

Size (mm)	10	12	16	20	25	32	40
Radius	3.50	4.25	7.50	14.00	30.00	43.00	58.00

### Cutting and Bending Tolerances

The tolerances for cutting and/or bending dimensions shall be in accordance with

the table below and shall be taken into account when completing the schedule.

Cutting and Bending Tolerances (mm)		
<b>Straight lengths</b> (including reinforcement for subsequent bending)		+25 -25
<b>Bending</b>	<1000mm	+5 -5
	>1000mm to <2000mm	+5 -10
	>2000mm	+5 -25



# Bar & Fabric Products

## Taper Threaded Couplers

Most widely used mechanical splicing system in the world.

With experience of over 30 years, LENTON products provide a complete line of full tension and compression mechanical splices.

LENTON couplers are the slimmest couplers on the market for tension and compression.



The unique LENTON self-aligning taper-threaded design provides ease of installation, consistent performance and durability. Couplers also develops higher tensile strength than lap splicing and provides full load transfer with the slimmest and shortest coupler possible.

LENTON couplers are designed for nominal yield values up to 550 MPa and tensile strength values up to 750 MPa.



A completed LENTON splice exceeds the requirements of International Codes including AC1318; AS3600; BS8597; DIN1045; MS146 codes for full tension splices. LENTON is CARES approved under number TA1C-5003 according BS codes and BNFL for **TENSION** and **COMPRESSION**.

**Type A12N - LENTON standard coupler** - most widely used to splice bars. Designed to splice the same diameter bars where one bar can be rotated.

**LENTON Transition coupler** - Equal to A12N only designed to splice different diameter bars. All combinations available.

**Type S13N - LENTON Bolt couplers** - provide a full strength joint between a reinforcing bar and a metric 8.8 quality bolt.

**Type LENTON Position couplers** - Designed to quickly splice two curved, bent or straight bars when neither bar can be rotated. The P13 is used when the ongoing bar is restricted in its axial direction. Both couplers can be supplied in two pieces for application against formwork. The female thread is corrosion protected and is provided with a plastic screw-in cap.



# Bar & Fabric Products

## LENTON Terminator

Provides an alternative to hooked rebar as the front of the coupler is generously proportioned to carry the full tension load of the rebar when the anchor is bearing against concrete or structural steel.

- Special couplers are available on request like stainless steel couplers or electrolytic galvanized couplers.
- Wide range of accessories are available like: nailing plates, protection caps, bar-end protectors.



## ON Site Threading

With the In Situ Threading machine one can cut the LENTON Taper thread on site.

Ideal as problem solver, or at extension of existing structures.



## LENTON Interlok

A unique rebar splicing system that utilizes LENTON taper-threads. Together with a grouted sleeve to provide structural integrity for precast applications.



## LENTON Speed-Sleeve

Ideal splice for compression only applications.



## LENTON Quick-Wedge

A quick and effective system for on-site connection of lighter diameter bars. LENTON Quick Wedge is a 'mechanical lap splice' for connecting rebar on site. An oval shaped steel sleeve is positioned around two overlapping bars and a steel wedge pin is then driven through the steel sleeve (using a small handheld hydraulic pindriver) to create the connection. Available in the sizes 12, 16 and 20 mm only.



# Bar & Fabric Products

Ancon Reinforcing Bar Couplers – strong, fast and easy to use.



## Tapered Thread Range

### Standard Series

Connects rebars of the same diameter, where one bar can be rotated.



### Positional Series

Designed for applications where neither bar can be rotated.



### Transition Series

Used to join rebars of different diameters where one coupler can be rotated.



Tapered Thread Range						
Bar Diameter	12	16	20	25	32	40
Standard Series	✓	✓	✓	✓	✓	✓
Positional Series	✓	✓	✓	✓	✓	✓
Transition Series	✓	✓	✓	✓	✓	✓
Weldable Couplers	✓	✓	✓	✓	✓	✓
Headed Anchors	✓	✓	✓	✓	✓	✓



## MBT Range

### ET Series

Connects rebars of the same diameter.



### Continuity C Series

Allows reinforcement to be extended at construction joints.



### Transition Series

Connects rebars of different diameters.



### Headed Anchors

Provide dead end embedment for bars in concrete.



- No bar end preparation or bar rotation required.
- Installation requires no specialist equipment.
- Ideal for remedial applications where replacement of damaged or corroded bar is required.
- The ET Series is approved by BBA Agreement Certificate No. 16/5300 and HAPAS 15/H240.

# Bar & Fabric Products

MBT Range						
Bar Diameter	12	16	20	25	32	40
ET Series	✓	✓	✓	✓	✓	✓
Continuity C Series	✓	✓	✓	✓	✓	✓
Transition Series	✓	✓	✓	✓	✓	✓
Headed Anchors	✓	✓	✓	✓	✓	✓



## Bartec Plus Range

### Type A

Used where the continuation bar can be rotated.



### Type B

Used where the continuation bar can be rotated for no more than one revolution.



### Type C

Used where the continuation bar cannot be rotated.



Bartec Plus Range					
Bar Diameter	16	20	25	32	40
Types A, B and C	✓	✓	✓	✓	✓
Transition Series	✓	✓	✓	✓	✓
Weldable Couplers	✓	✓	✓	✓	✓
Headed Anchors	✓	✓	✓	✓	✓



**Ancon**  
BUILDING PRODUCTS  
www.ancon.com

# Bar & Fabric Products

## Standard Fabric

### Fabric Reinforcement

BRC manufacture a range of CARES Approved fabric products, manufactured to BS4483, including:-

- Standard fabric.
- Flying end fabric.
- Cut and bent fabric.
- Made-to-measure and tailored fabric.

Electrically welded fabric BS4483.

All standard sheets A,B and D are 4.8 x 2.4m

A393, A252, A193, A142 and B785 are also available in merchant size sheets 3.6 x 2.0m

BS4483 Fabric BRC Ref:	Mesh size normal Pitch of wires		Diameter of Wire		Cross Sectional Area Per metre width		Normal mass Per m2 Kg	No of Sheets Per tonne	No of Sheets Per pack
	Main mm	Cross mm	Main mm	Cross mm	Main mm	Cross mm			
<b>Square Mesh</b>									
A393	200	200	10	10	393	393	6.16	15	20
A252	200	200	8	8	252	252	3.95	22	30
A193	200	200	7	7	193	193	3.02	29	40
A142	200	200	6	6	142	142	2.22	40	50
<b>Structural Mesh</b>									
B1131	100	200	12	8	1131	252	10.9	8	10
B785	100	200	10	8	785	252	8.14	11	14
B503	100	200	8	8	503	252	5.93	15	20
B385	100	200	7	7	385	193	4.53	20	30
B283	100	200	6	7	283	193	3.73	24	40
<b>Wrapping Mesh</b>									
D49	100	100	2.5	2.5	49	49	0.77	113	
<b>Long Mesh (subject to availability)</b>									
C785	100	400	10	6	785	70.8	6.72	13	20
C636	100	400	9	6	636	70.8	5.55	16	20
C503	100	400	8	5	503	70.8	4.51	21	30
C385	100	400	7	5	385	70.8	3.58	26	40
C283	100	400	6	5	283	70.8	2.78	34	50



# Bar & Fabric Products

## Flying End Mesh

BRC flying end fabrics are stocked in many British standard references, offering considerable benefits over standard fabric sheets:

<b>Accurate cover</b>	Extended overhangs can eliminate wire build-up at laps.
<b>Faster laying cycle</b>	Simplified lap details improves speed of laying and assists checking build-up.
<b>Reduced Wastage</b>	In certain cases, larger sheet size can reduce on site cutting and waste.
<b>Increased flexibility</b>	Reducing the lap build-up allows improved flexibility when positioning BRC circular spacers.
<b>Reduced cost and reduced quantity</b>	The flying end fabric has positioning 'wire spacers' not circular wire spacers. One bar less than the standard sheet and is at a reduced cost.

## Made-to-measure and tailored fabric reinforcement

### BRC made-to-measure fabric reinforcement

BRC manufacture A, B and C types in sizes to suit your application (subject to machine capability, transport and handling on site). With or without Flying Ends, a more cost effective solution can be achieved by reducing cutting, wastage and a lapping congestion.

### BRC tailored fabric reinforcement

Designed to suit specific projects, BRC can provide mesh that offers an alternative to conventional loose rebar. Supplied with or without Flying Ends, reinforcement in various diameters can be offered in sheet sizes to suit your contract (subject to machine capability, transport and handling on site).

OL1, OL2 Overhangs of longitudinal wires

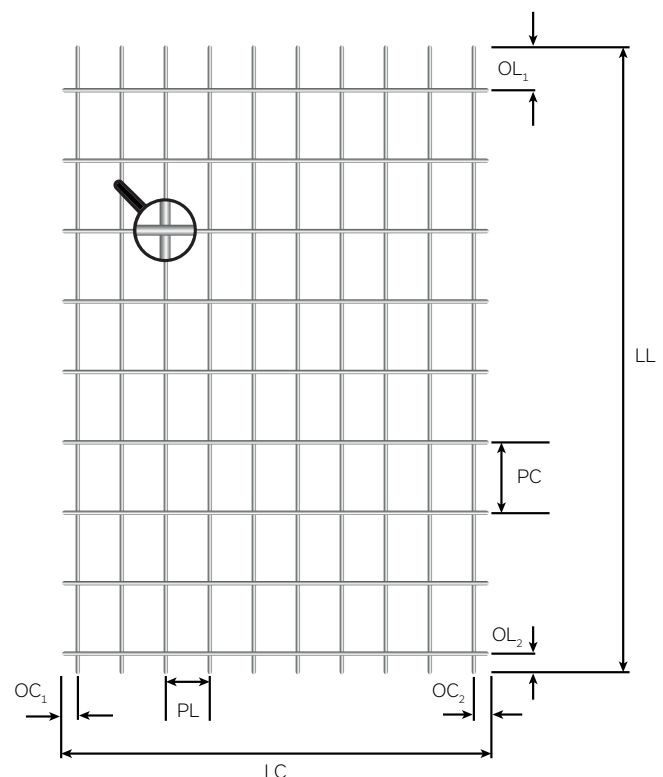
OL3, OL4 Overhangs of cross wires

LL Length of longitudinal wires (not necessarily the longest wire in the sheet)

LC Length of cross wires

PL Pitch of longitudinal wires

PC Pitch of cross wires



# Bar & Fabric Products

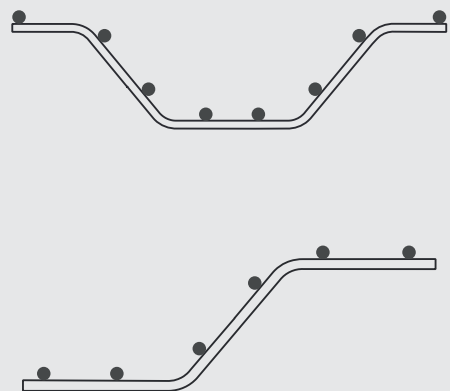
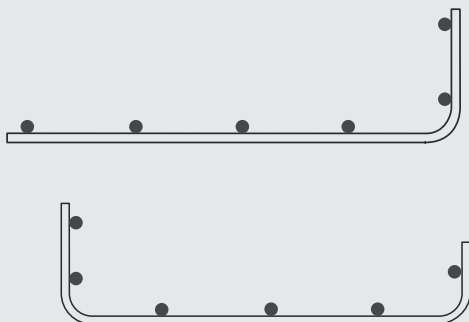


## Cut and Bent Fabric

Both standard flying end and made to measure fabrics can be supplied to designers specification, cut or bent.



Most British standard shape codes can be accommodated but it may be necessary to manufacture them in sections for ease of transportation or to enable the shape to be completed.



# Accessories

Spacers .....	18
Tying Wire .....	25
Remedial Couplers .....	27
Protection Products .....	28
DPM, Polythene & Tapes .....	31
Dowel Bar Products .....	32
Joint Products .....	34
Screed Rail and Chairs .....	36
Other Groundwork Accessories .....	38
Formwork Accessories .....	39
Permanent Formwork .....	44
Column Formers .....	45
PVC Waterstops .....	46
Self Swelling Waterstops .....	47
Self Adhesive Membranes .....	49
Bentonite Membranes .....	50
Pre-Applied Membranes .....	51
Liquid Applied Membranes .....	52
Cementitious Coatings .....	53
Joint Sealants .....	54
Concrete Repair .....	55
Total Protection Products .....	57
Ground Gas Protection .....	58
Chemicals .....	60
Grouts, Mortars and Resins .....	64
Engineered Solutions .....	70

Visit our website to view our full accessory range  
[www.brc.ltd.uk](http://www.brc.ltd.uk)

## Single Cover Concrete Spacers

Single Cover Concrete Spacers are manufactured from glass fibre reinforced cement, and are as strong as the surrounding concrete. They have a wide base for maximum stability when used as recommended for horizontal applications. They are strong, durable, and the optimum choice for heavy-duty steel fixing applications.



Item Code	Cover (mm)	Pack Size
KA02101TUF25	25	500
KA02101TUF30	30	250
KA02101TUF35	35	250
KA02101TUF40	40	250
KA02101TUF50	50	200

## Double Cover Concrete Spacers

Double Cover Concrete Spacers are manufactured from glass fibre reinforced cement, and are as strong as the surrounding concrete. They are designed for use in both horizontal and vertical applications with the flat base providing additional support and stability where there is a greater weight of reinforcement. They are strong, durable, and the optimum choice for heavy-duty steel fixing applications.



Item Code	Cover (mm)	Pack Size
KA02101TUF1520D	15-20	500
KA02101TUF2530D	25-30	500
KA02101TUF3040D	30-40	250
KA02101TUF3545D	35-45	200
KA02101TUF4050D	40-50	200
KA02101TUF6075D	60-75	50

## Triple Cover Concrete Spacers

Triple Cover Concrete Spacers are manufactured from glass fibre reinforced cement, and are as strong as the surrounding concrete. They are recommended for use in vertical applications and the design allows excellent concrete flow and minimises the area of spacer at the surface. They are strong, durable, and the optimum choice for heavy-duty steel fixing applications.



Item Code	Cover (mm)	Pack Size
KA02101TUF2030	20-25-30	500
KA02101TUF3550	35-40-50	200

## Concrete Meshmen

Concrete Meshmen Spacers are manufactured from glass fibre reinforced cement, and are heavy-duty concrete spacers suitable for supporting mesh reinforcement in ground floor slabs. They are ideal for use on polythene membranes and blinding.



### Recommended Spacing

- Maximum spacing 750mm
- Minimum of two spacers per m<sup>2</sup>

For small diameter mesh fabric more spacers will be required to stop 'sagging'.

Item Code	Cover (mm)	Pack Size
KA02431MS4050	40-50	100

## Concrete Square Bar

Concrete Square Bars are manufactured from glass fibre reinforced cement, in one metre lengths in a variety of square sections. Fixing costs are greatly reduced as the bars can simply be laid on the formwork or ground floor sub-base prior to the loading of the reinforcement cage. Other applications include their use as kickers and formwork spacers.



Item Code	Cover (mm)	Length (mtr)	Pallet Qty (mtr)
KA02321SQB25	25	1	600
KA02321SQB30	30	1	500
KA02321SQB35	35	1	500
KA02321SQB40	40	1	300
KA02321SQB50	50	1	250
KA02321SQB60	60	1	150
KA02321SQB75	75	1	100
KA02321SQB100	100	1	70

## Clip-On Concrete Spacers

Clip-On Concrete Spacers have a double plastic clip for high loads, and are suitable for vertical and horizontal use. They have round supports ensuring minor contact with the formwork.



Item Code	Cover (mm)	Pack Size
KA02101BETON40	40	125
KA02101BETON50	50	125

## Plastic Line Spacers

U-Fix Plastic Line Spacers are two metre continuous plastic line spacers for supporting bottom reinforcement in suspended slabs. They have good stability and allow excellent concrete flow characteristics. They are particularly suitable for use on metal decking.



Item Code	Cover (mm)	Length (mtr)	Pack Size (mtr)	Pallet Qty (mtr)
KE05101UFI15	15	2	100	8,000
KE05101UFI20	20	2	100	5,600
KE05101UFI25	25	2	100	4,800
KE05101UFI30	30	2	100	4,200
KE05101UFI35	35	2	60	2,880
KE05101UFI40	40	2	60	2,400
KE05101UFI50	50	2	60	1,680
KE05101UFI60	60	2	40	1,600

## Standard Gradeplate Spacers

Standard Gradeplate Spacers are double cover spacers that have been designed for use in ground floor slabs, where the large base area prevents puncturing of polythene film and gives a stable support to the reinforcing steel.



Item Code	Cover (mm)	Pack Size
KE05109STY2530	25-30	500
KE05109STY4050	40-50	200
KE05109STY6575	65-75	200
KE05109STY90100	90-100	100

## Premium Gradeplate Spacers

Premium Gradeplate Spacers are double cover spacers that have been designed for use in ground floor slabs, where the large base area prevents puncturing of polythene film and gives a stable support to the reinforcing steel.



Item Code	Cover (mm)	Pack Size
KE05109STY2530S	25-30	500
KE05109STY4050S	40-50	200
KE05109STY5060S	50-60	100
KE05109STY6070S	60-70	100
KE05109STY7080S	70-80	100
KE05109STY9010S	90-100	100

## Minifix Wheel Spacers



Minifix Wheel Spacers have clamping tongues to accommodate a variety of bar diameters. They have an open design which does not interrupt the concrete flow, and outside ribs which minimise contact with the formwork.

Item Code	Cover (mm)	For Bar Dia (mm)	Pack Size
KE05103M050406	5	4-6	5,000
KE05103M100408	10	4-8	1,000
KE05103M120408	12	4-8	1,000
KE05103M150408	15	4-8	1,000
KE05103M151014	15	10-14	1,000
KE05103M151418	15	14-18	1,000
KE05103M200408	20	4-8	1,000
KE05103M200418	20	4-18	1,000
KE05103M200812	20	8-12	1,000
KE05103M201014	20	10-14	500
KE05103M201216	20	12-16	500
KE05103M250418	25	4-18	1,000
KE05103M250610	25	6-10	500
KE05103M251014	25	10-14	500
KE05103M251216	25	12-16	500
KE05103M251220	25	12-20	1,000
KE05103M251620	25	16-20	500
KE05103M300408	30	4-8	500
KE05103M300412	30	4-12	500
KE05103M300418	30	4-18	500
KE05103M300812	30	8-12	500
KE05103M301220	30	12-20	500

Item Code	Cover (mm)	For Bar Dia (mm)	Pack Size
KE05103M350510	35	5-10	500
KE05103M351020	35	10-20	250
KE05103M400408	40	4-8	500
KE05103M400418	40	4-18	500
KE05103M400812	40	8-12	500
KE05103M401220	40	12-20	250
KE05103M402030	40	20-30	250
KE05103M450812	45	8-12	500
KE05103M500410	50	4-10	250
KE05103M500418	50	4-18	250
KE05103M500812	50	8-12	250
KE05103M501220	50	12-20	250
KE05103M502026	50	20-26	500
KE05103M600418	60	4-18	250
KE05103M601228	60	12-28	100
KE05103M701220	70	12-20	100
KE05103M750418	75	4-18	100
KE05103M752026	75	20-26	100
KE05103M950510	95	5-10	200
KE05103M1000418	100	4-18	75
KE05103M1001232	100	12-32	75
KE05103M1001632	100	16-32	75

Please see the back cover for depot locations



## Plastic Wheel Spacers

Plastic Wheel Spacers are for use with vertical reinforcement. The special design of the bar seat allows the spacer to be used for numerous bar diameters and ensures good concrete flow.



Item Code	Cover (mm)	For Bar Dia (mm)	Pack Size
KE05103WS150412	15	4-12	1,000
KE05103WS20412	20	4-12	500
KE05103WS250412	25	4-12	500
KE05103WS251220	25	12-20	500
KE05103WS300418	30	4-18	500
KE05103WS300516	30	5-16	1,000
KE05103WS350516	35	5-16	1,000
KE05103WS400514	40	5-14	125
KE05103WS401220	40	12-20	500
KE05103WS500516	50	5-16	500
KE05103WS500812	50	8-12	100
KE05103WS501220	50	12-20	500
KE05103WS600614	60	6-14	500
KE05103WS701220	70	12-20	250

## A-Clip Spacers

A-Clip Spacers have proved to be the most popular of our range of plastic clip-on spacers. Designed for heavy-duty applications they are robust spacers that accommodate bars of up to 20mm.



Item Code	Cover (mm)	For Bar Dia (mm)	Pack Size
KE05104ACLIP15	15	6-16	2,000
KE05104ACLIP20	20	6-16	1,000
KE05104ACLIP25	25	8-20	1,000
KE05104ACLIP30	30	8-20	1,000
KE05104ACLIP35	35	8-20	1,000
KE05104ACLIP40	40	8-20	500
KE05104ACLIP50	50	8-20	500

## Pile Cage Spacers

Pile Cage Spacers are specifically designed for insitu piling and diaphragm wall applications with a clip-on action to simplify fixing.



Item Code	Cover (mm)	Pack Size
KE05211PIL45	45-50	200
KE05211PIL75	70-75	100

## Clampfix Spacers

Clampfix Spacers are general purpose clip-on spacers used in all types of applications found in precast yards and on site. They can be fixed horizontally or vertically on bars from 4mm to 20mm diameter.



Item Code	Cover (mm)	For Bar Dia (mm)	Pack Size
KE05104CLA15	15	4-12	1,000
KE05104CLA20	20	4-16	1,000
KE05104CLA25	25	4-18	1,000
KE05104CLA30	30	4-18	1,000
KE05104CLA40	40	4-18	1,000
KE05104CLA50	50	4-18	1,000
KE05104CLA60	60	4-18	500
KE05104CLA65	65	4-18	500
KE05104CLA75	75	6-20	500

## Maxifix Spacers

Maxifix Spacers are solid clip-on spacers for medium to heavy loads, common in all areas of the construction industry both in precast yards and on building sites. They offer not only the price advantage to many other spacers for heavy reinforcement, but also allow reinforcement of up to 25mm.



Item Code	Cover (mm)	For Bar Dia (mm)	Pack Size
KE05104MAX015	15	8-25	1,000
KE05104MAX020	20	8-25	1,000
KE05104MAX025	25	8-25	1,000
KE05104MAX030	30	8-25	500
KE05104MAX035	35	8-25	500
KE05104MAX040	40	8-25	500
KE05104MAX050	50	8-25	500
KE05104MAX075	75	8-25	250
KE05104MAX100	100	8-25	250

## Klemmfix Spacers

Klemmfix Spacers are of sturdy construction for heavy duty applications, whether vertical or horizontal reinforcement. The widespread surface and foot tubes increase the carrying capacity and prevent tipping over.



Item Code	Cover (mm)	For Bar Dia (mm)	Pack Size
KE05105KL150612	15	6-12	1,000
KE05105KL151320	15	13-20	500
KE05105KL200612	20	6-12	1,000
KE05105KL201320	20	13-20	500
KE05105KL250612	25	6-12	500
KE05105KL251320	25	13-20	500
KE05105KL300612	30	6-12	500
KE05105KL301320	30	13-20	500
KE05105KL350612	35	6-12	500
KE05105KL351320	35	13-20	250
KE05105KL401320	40	13-20	250
KE05105KL500612	50	6-12	250
KE05105KL501320	50	13-20	200
KE05105KL601228	60	12-28	100

## Distafix Spacers

Distafix Spacers are end caps designed to provide both a suitable cover to the formwork and prevention against rust staining.



Item Code	Cover (mm)	For Bar Dia (mm)	Pack Size
KE05110DI150408	15	4-8	1,000
KE05110DI151016	15	10-16	500
KE05110DI200408	20	4-8	1,000
KE05110DI201016	20	10-16	500
KE05110DI250408	25	4-8	1,000
KE05110DI251016	25	10-16	500
KE05110DI300408	30	4-8	1,000
KE05110DI301016	30	10-16	500
KE05110DI350408	35	4-8	1,000
KE05110DI351016	35	10-16	1,000
KE05110DI400408	40	4-8	1,000
KE05110DI450408	45	4-8	1,000



## Quadrofix Spacers

Quadrofix Spacers are plastic spacers designed to minimise contact with the formwork. They are ideal for both exposed aggregate concrete and textured concrete.



Item Code	Cover (mm)	For Bar Dia (mm)	Pack Size
KE05110QUAD20	20	12	1,000
KE05110QUAD25	25	12	1,000
KE05110QUAD30	30	12	500
KE05110QUAD35	35	12	500
KE05110QUAD40	40	12	500
KE05110QUAD50	50	12	500

## Continuous Hystools

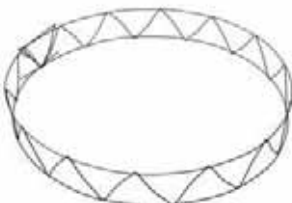
Continuous Hystools are two metres long and are particularly suitable for ground floor slabs as their unique design eliminates any danger of puncturing damp proof membranes. We recommend a minimum of five spacers per standard sheet of mesh.



Item Code	Cover (mm)	Length (mtr)	Pack Size (mtr)
KD04101HO050B	50	2	50
KD04101HO075B	75	2	50
KD04101HO090B	90	2	50
KD04101HO105B	105	2	50
KD04101HO120B	120	2	50
KD04101HO135B	135	2	50
KD04101HO150B	150	2	50
KD04101HO165B	165	2	50
KD04101HO180B	180	2	50
KD04101HO200B	200	2	40
KD04101HO220B	220	2	30
KD04101HO230B	230	2	30
KD04101HO250B	250	2	30
KD04101HO280B	280	2	30
KD04101HO300B	300	2	20

## Circular Spacers

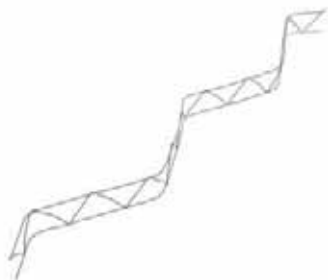
Circular Spacers provide a quick, easy and economical method of supporting reinforcement in concrete slabs. The spacers are delivered in three metre long straight lengths, which can be formed into a circle of one metre diameter. We recommend four circular spacers per sheet of mesh.



Item Code	Cover (mm)	Length (mtr)	Pack Size (mtr)
KD04104CS050B	50	3	75
KD04104CS075B	75	3	75
KD04104CS090B	90	3	75
KD04104CS105B	105	3	75
KD04104CS120B	120	3	75
KD04104CS135B	135	3	75
KD04104CS150B	150	3	75
KD04104CS165B	165	3	75
KD04104CS180B	180	3	75
KD04104CS200B	200	3	75

## Wave Spacers

Wave Spacers have an effective length of two metres and offer a quick and easy method of supporting reinforcement. We recommend a minimum of five wave spacers per standard sheet of mesh.



Item Code	Cover (mm)	Length (mtr)	Pack Size (mtr)
KD04104WS050230	50	2	50
KD04104WS075230	75	2	50
KD04104WS090230	90	2	50
KD04104WS105230	105	2	50
KD04104WS120230	120	2	50

## Flat Top Spacers

Flat Top Spacers are two metres long and are suitable for supporting either top or bottom reinforcement. We recommend a minimum of five spacers per standard sheet of mesh.



Item Code	Cover (mm)	Length (mtr)	Pack Size (mtr)
KD04105FT050X2M	50	2	50
KD04105FT060X2M	60	2	50
KD04105FT075X2M	75	2	50
KD04105FT090X2M	90	2	50
KD04105FT105X2M	105	2	50
KD04105FT120X2M	120	2	50
KD04105FT135X2M	135	2	50
KD04105FT150X2M	150	2	50
KD04105FT165X2M	165	2	50
KD04105FT170X2M	170	2	50
KD04105FT180X2M	180	2	50
KD04105FT200X2M	200	2	50

## Individual Hystools

Individual Hystools are freestanding, easy to position, and are manufactured to a height of up to 375mm.



Item Code	Cover (mm)	Pack Size
KD04211HY075	75	Each
KD04211HY100	100	Each
KD04211HY120	120	Each
KD04211HY125	125	Each
KD04211HY135	135	Each
KD04211HY150	150	Each
KD04211HY175	175	Each
KD04211HY200	200	Each
KD04211HY300	300	Each
KD04211HY375	375	Each

## Black Annealed Tying Wire

Black Annealed Tying Wire is available in 16 gauge or 17 gauge, and is supplied as a standard coil or in 2kg mini coils (16g only).



Item Code	Gauge	Coil Size (kg)
KC03101BLA1615	16	12
KC03101BLA17	17	12
KC03101BLA162	16	2

## Wire Cutters

The Wire Cutters are a premium brand of nips for steel fixers.



Item Code	Pack Size
KO13204WCS8	Each

## Reelfix Reel Pack

The Rapid Reel is a lightweight, refillable wire dispensing unit designed to be worn in conjunction with the Reelfix belt and comfort pad. Refill spools are locked in the reel by a quarter turn knob. Empty spools can be replaced in less than 20 seconds and without the need for the user to remove their belt.



Item Code	Description	Pack Size
KC03202REELPAC	Reelfix Reel Pack - Case, Belt and Pad	Each
KC03202REELREFI	Reelfix Refill Spool	Each

## Stainless Steel Tying Wire

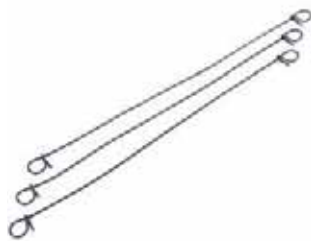
Stainless Steel Tying Wire is 18 gauge wire used where there is a danger of wire off-cuts being left on the formwork and causing staining on the surface of the concrete. It is available in standard 20kg coils or 2kg mini coils.



Item Code	Gauge	Coil Size (kg)
KC03304STK18	18	20
KC03304STA182	18	2

### Double Loop Ties

Double Loop Ties are an alternative form of wiring together reinforcement using a tying tool.



Item Code	Length (mm)	Pack Size
KC03305DLT100	100	1,000
KC03305DLT125	125	1,000
KC03305DLT150	150	1,000
KC03305DLT200	200	1,000
KC03305DLT250	250	1,000
KC03305DLT300	300	1,000

### Tying Tool

The Tying Tool is for use with the double loop ties.



Item Code	Pack Size
KC03305DLTTOOL2	Each

### Bindfix Ties

Bindfix Ties are labour saving easy-to-use binders for quick, firm tying of reinforcement. They require no tools, give no off-cuts, and are particularly suited for use in the precast industry.



Item Code	For Bar Dia (mm)	Pack Size
KC03306BFT06	6	10,000
KC03306BFT08	8	10,000
KC03306BFT10	10	11,200
KC03306BFT12	12	9,600
KC03306BFT16	16	6,000
KC03306BFT20	20	4,000
KC03306BFT24	24	4,000

### Bundling Wire

Bundling Wire is available as 8 gauge or 10 gauge in 20kg coils.



Item Code	Gauge	Coil Size (kg)
KC03101BLA3.25	10	20
KC03101BLA4.00	8	20

Please see the back cover for depot locations



## Unitec Couplers



The Unitec Coupler is a shear-bolt coupling system for the connection of concrete reinforcement bars  $\varnothing$ 12 to 40 mm. Unitec Couplers are CARES Approved TA1 - B5046.

### Benefits

- Site assembly with standard impact wrench.
- No need for bar end preparation.
- Readily available off the shelf.
- Ideal for concrete-embedded bars, repair and retrofit works, bent bars, etc.
- Type 2 splice as per ACI 318 requirements. Complies with BS 8110 and NF A35-020 standards.

Item Code	Bar Dia (mm)	Outside Dia (mm)	Length (mm)	Bolt Size	Bolts Per Coupler	Weight (Kg)	Torque (Nm)	Pack Size
KK10111UNITEC12	12	48	140	M12	6	1.6	140	Each
KK10111UNITEC16	16	48	140	M12	6	1.6	140	Each
KK10111UNITEC20	20	51	200	M12	8	2.5	140	Each
KK10111UNITEC25	25	62	240	M16	8	3.8	250	Each
KK10111UNITEC32	32	82	280	M20	8	8.5	680	Each
KK10111UNITEC40	40	95	425	M20	12	15.4	680	Each

## Lenton Lock Couplers



LENTON® LOCK is an in-situ rebar splice from ERICO, requiring no bar-end preparation. It is ideal for new construction, repair or retrofit applications. The Lenton Lock coupler features patented gripping technology that helps provide for the development of full rebar strength and improved overall structural integrity in tension, compression, stress-reversal and dynamic applications.

This innovative mechanical rebar splice is designed for use in column splicing, bridge applications, piling, splicing to protruding dowels cast in concrete, closure pours, beams, chimney construction and other demanding splicing applications.

Item Code	Bar Dia (mm)	Outside Dia (mm)	Length (mm)	Bolt Size	Bolts Per Coupler	Weight (Kg)	Torque (Nm)	Pack Size
KK17103LL12	12	29	127	M12	6	0.57	205	Each
KK17103LL16	16	35	159	M12	6	0.92	205	Each
KK17103LL20	20	44	191	M12	8	1.68	205	Each
KK17103LL25	25	54	254	M16	8	3.37	475	Each
KK17103LL32	32	65	323	M20	8	5.92	680	Each
KK17103LL40	40	80	400	M20	12	10.88	790	Each

## MBT ET Couplers



The MBT ET range of couplers provides a cost-effective method of joining reinforcing bars, particularly when the fixed bar is already in place and there is insufficient space for a hydraulic swaging press. This series of couplers is used to connect reinforcing bars of the same size.

MBT ET Couplers are easy to install and achieve failure loads higher than 115% of the characteristic yield strength of grade 500 reinforcing bar. Neither bar end preparation to form threads, nor bar rotation are required. They can also be used to join imperial, plain round or deformed reinforcing bars.

Item Code	Bar Dia (mm)	Outside Dia (mm)	Length (mm)	Bolt Size	Bolts Per Coupler	Weight (Kg)	Torque (Nm)	Pack Size
KK11103MBT12	12	33.4	140	M12	6	0.72	55	Each
KK11103MBT16	16	42.2	160	M12	6	1.25	108	Each
KK11103MBT20	20	48.3	204	M12	8	1.96	108	Each
KK11103MBT25	25	54.0	258	M16	8	3.00	275	Each
KK11103MBT32	32	71.0	312	M20	10	6.50	360	Each
KK11103MBT40	40	81.0	484	M20	14	11.30	525	Each

## Anti-impalement ReACTer Caps and Rail System

As part of our commitment to continually seeking to offer our customers new and innovative products, RFA-Tech has been working exclusively in partnership with its local UK Rebar Safety Cap supplier to find a proven solution for protecting your workforce from the danger of impalement by reinforcement starter bars on construction sites.

It is our belief that there is no other product on the market in the UK that can offer the level of protection given by the ReACTer Cap. At the moment there is no British Standard for a Rebar Safety Cap. However, due to the increase in the number of fall impalement accidents in USA resulting in either serious injury or death, the California Occupational Safety and Health Regulations (CAL/OSHA) have formulated the Code of Regulation 1926.701(b) Reinforcing steel. (Which says) "All protruding reinforcing steel, onto and into which employees could fall, shall be guarded to eliminate the hazard of impalement."

From this, they introduced the testing and specification standards California Regs (OSHA) – 344.90 Impalement protection specifications and testing criteria. This specifies drop test specifications for an anti-impalement safety cap which can be approved for working at a height of 2.3 metres. These specifications are the only ones used throughout the USA and also acknowledged as the only method of testing in Europe, Australia and New Zealand.

The ReACTer Cap has been designed to, and tested to exceed these requirements, with the tests being witnessed by an independent UKAS and ANSI accredited testing laboratory.

As a result, the ReACTer Cap will protect your workforce from impalement injuries on reinforcement starter bars should they be unfortunate enough to fall on them, from a height of up to 5 metres.



### How it Works

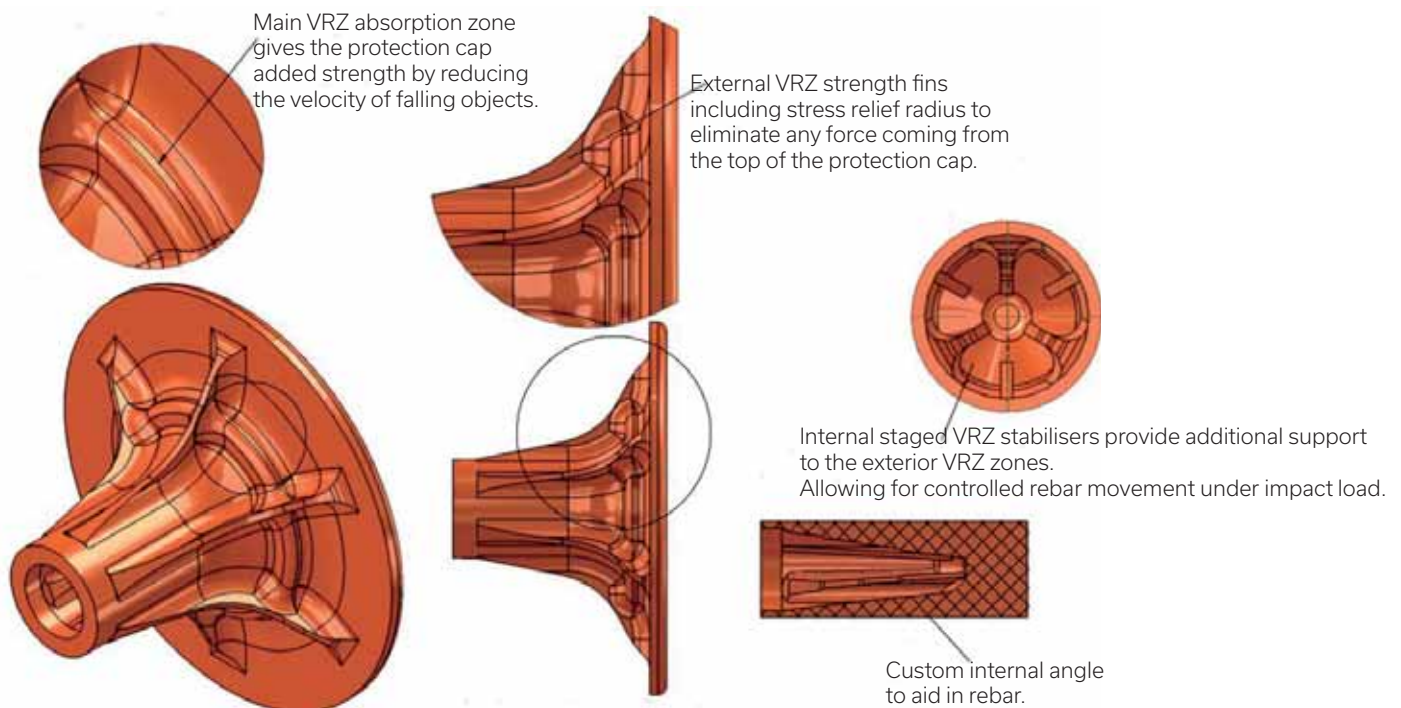
The ReACTer Cap works in two different, but complimentary ways:

Firstly, the inner flutes reduce the speed the cap is pushed down onto the reinforcement.  
Secondly, the ribs & ridge underneath the head dissipate the impact force by flexing and directing the force over the sides of the cap. These two features combine to give what is known as the 'VRZ' or 'Velocity Reduction Zone'.

The 'VRZ', in conjunction with the careful selection of a thermoplastic polymer prevents the reinforcement from breaching the cap and therefore prevents impalement.

The ReACTer Cap is visually quite unique. The head is flat and approximately 100cm<sup>2</sup>. Below the head of the cap there is a set of ribs to support the head and provide the 'VRZ'.

There are two sizes of ReACTer Cap available to fit reinforcement sizes 8-16mm and 16-32mm.

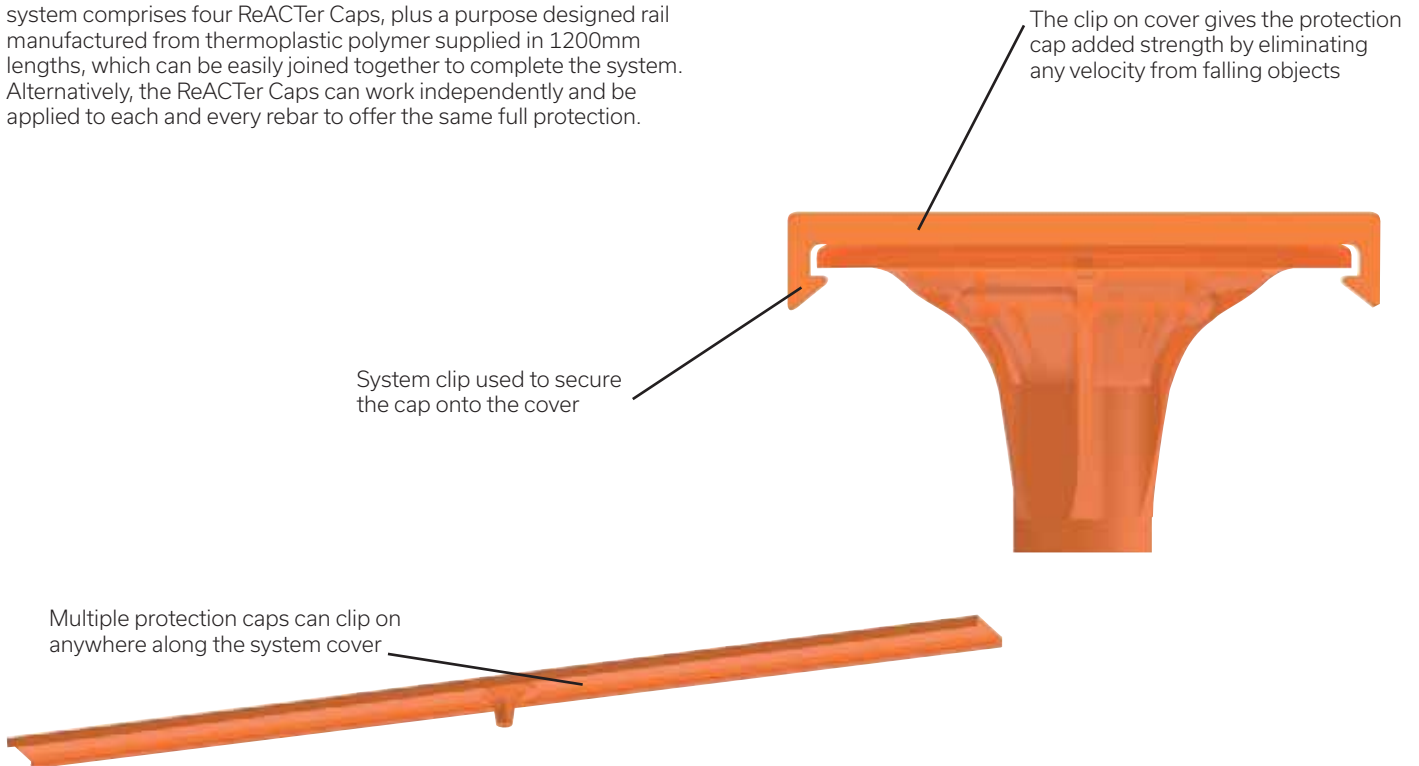


Please see the back cover for depot locations



## ReACTer Cap Rail System

The second part of the system, known as the ReACTer Cap Rail System, which has also been fully tested, will allow four ReACTer Caps to cover reinforcement up to a distance of 2.25 metres. The system comprises four ReACTer Caps, plus a purpose designed rail manufactured from thermoplastic polymer supplied in 1200mm lengths, which can be easily joined together to complete the system. Alternatively, the ReACTer Caps can work independently and be applied to each and every rebar to offer the same full protection.



## ReACTer Cap and Rail System Key Benefits

- Designed to meet and exceed the California Regs. (OSHA) specification.
- Product specification that exceeds this globally used specification by 66% on drop height and 10% on weight.
- Product testing witnessed by an independent UKAS and ANSI accredited testing laboratory.
- Will prevent potentially fatal reinforcement penetration injuries from heights of up to 5 metres.
- Providing not damaged in an accident they are quickly reclaimable and are safe to re-use, saving on-site costs.
- More cost-effective than alternative systems available on the market.
- Both patent (AU2014900306/AU2014900313) & design (AU354641) have been applied for, ensuring you get the same reliable, robust product every time you order.
- Available to provide protection on all standard sizes of reinforcement.
- High visibility orange caps and Rail system.
- Does not require any untested third party components to complete the system.
- Manufactured and distributed in the UK, ensuring rapid technical response and delivery.

Item Code	Description	Pack Size
KO13307REA0816	8-16mm Reacter Cap Safety End Cap	20
KO13307REA1632	16-32mm Reacter Cap Safety End Cap	20
KO13307REARAIL	Reacter Rail 1.2mtr Length	Each
KO13307REC0816	Reacter Connector Cap (Small) 8-16mm	20
KO13307REC1632	Reacter Connector Cap (Med) 16-32mm	20

## Rebar Safety End Caps

Rebar Safety End Caps are designed for use in the construction industry, and fit over the ends of protruding reinforcement bars reducing the risk of injury. Three sizes are available to suit bars 8mm-16mm, 16mm-32mm and 40mm-50mm.



Item Code	Bar Dia (mm)	Pack Size
KO13307RSC0818	8-16	250
KO13307RSC1632E	16-32	250
KO13307RSC4050	40-50	100

## Frost Blankets

Frost Blankets are an 8mm thick polyethylene thermal blanket which provides efficient protection, with proven performance at extremely low temperatures.



Item Code	Width (mtr)	Length (mtr)	Thickness (mm)	Pack Size
KF06114FROBSTND	1.5	75	8	Each
KF06114FROST60M	1.85	60	8	Each

## Temporary Protection Sheeting

Temporary Protection Sheeting is available in 132 gauge, 33mu with a coverage of 200m<sup>2</sup> per roll (4m x 50m).



Item Code	Width (mtr)	Length (mtr)	Pack Size
KF06113PROT50M	4	50	Each

## 2mm Protection Board

2mm Protection Board is a corrugated polypropylene sheet which is easy to cut, crease or curve to any site requirement.



Item Code	Width (mtr)	Length (mtr)	Pack Size
KF06114PROT2M	1.22	2.44	Each

Please see the back cover for depot locations





## Polythene Damp Proof Membrane

High quality BBA approved Polythene Damp Proof Membrane is available in various grades. All rolls when unfolded are approximately 4m wide.



Item Code	Type	Gauge	Microns	Width (mtr)	Length (mtr)
KF06113DPM0500	Multifold	500	125	4	50
KF06113DPM1000	Multifold	1,000	250	4	25
KF06113DPM1200	Multifold	1,200	300	4	25
KF06113CENT1200	Centrefold	1,200	300	4	25
KF06113DPM2000	Multifold	2,000	500	4	12.5
KF06113CENT2000	Centrefold	2,000	500	4	12.5

## Single Sided Jointing Tape

The Single Sided Jointing Tape is waterproof and pressure sensitive. It is ideal for use on polythene sheet or formwork joints. It is available as 50mm width in 27m or 33m rolls, 75mm width in 33m rolls, or 100mm width in 27m rolls.



Item Code	Width (mm)	Roll (mtr)	Pack Size
KG07102NT5027	50	27	Each
KG07102NT5033	50	33	Each
KG07102NT7533	75	33	Each
KG07102NT10027	100	27	Each

## Double Sided Jointing Tape

The Double Sided Jointing Tape is waterproof and pressure sensitive. It is ideal for use on polythene sheet or formwork joints. It is 50m long and available in widths of 50mm or 75mm.



Item Code	Width (mm)	Roll (mtr)	Pack Size
KG07102DBST50	50	50	Each
KG07102DBST75	75	50	Each

## Mild Steel Dowel Bars

Mild Steel Dowel Bars can be supplied in various diameters with sawn end (12mm diameter cropped) to specific lengths. In addition to the standard lengths shown in the table below, special lengths can be manufactured to order. Polymeric coating can also be ordered on request.



Item Code	Bar Dia (mm)	Length (mm)	Pack Size
KF06103DB12400	12	400	Each
KF06103DB12500	12	500	Each
KF06103DB12600	12	600	Each
KF06103DB12900	12	900	Each
KF06103DB121000	12	1000	Each
KF06103DB16400	16	400	Each
KF06103DB16600	16	600	Each
KF06103DB16900	16	900	Each
KF06103DB20400	20	400	Each
KF06103DB20500	20	500	Each
KF06103DB20600	20	600	Each
KF06103DB20900	20	900	Each
KF06103DB25400	25	400	Each
KF06103DB25500	25	500	Each
KF06103DB25600	25	600	Each

## Stainless Steel Dowel Bars

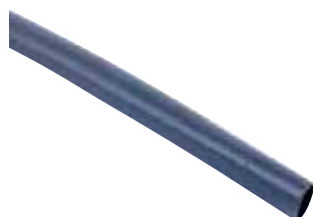
Stainless Steel Dowel Bars provide a durable, corrosion resisting solution to connections in concrete or other structural applications. They are supplied in standard 304 grade, although other grades are also available on request. In addition to the standard lengths shown in the table below, special lengths can be manufactured to order.



Item Code	Bar Dia (mm)	Length (mm)	Pack Size
KF06106DB16400	16	400	Each
KF06106DB16600	16	600	Each
KF06106DB16900	16	900	Each
KF06106DB20400	20	400	Each
KF06106DB20600	20	600	Each
KF06106DB20900	20	900	Each
KF06106DB25400	25	400	Each
KF06106DB25600	25	600	Each
KF06106DB25900	25	900	Each
KF06106DB32400	32	400	Each
KF06106DB32600	32	600	Each
KF06106DB32900	32	900	Each

## Dowel Bar Sleeves

Dowel Bar Sleeves are manufactured from high grade flexible PVC. They are tough, durable and have an average wall thickness of 1.25mm.



Item Code	Bar Dia (mm)	Length (mm)	Pack Size
KF06104DBS12450	12	450	100
KF06104DBS16300	16	300	100
KF06104DBS16450	16	450	100
KF06104DBS20300	20	300	100
KF06104DBS25300	25	300	100
KF06104DBS32375	32	375	92

Please see the back cover for depot locations



## Dowel Bar Caps

The Dowel Bar Debonding Caps are manufactured from rigid PVC tube with polyethylene foam fixed into one end to act as a compression filler, which allows for the expansion of dowel bars in construction joints.



Item Code	Bar Dia (mm)	Length (mm)	Pack Size
KF06105DBC12100	12	100	100
KF06105DBC16100	16	100	100
KF06105DBC20100	20	100	100
KF06105DBC25100	25	100	100
KF06105DBC32100	32	100	100
KF06105DBC40100	40	100	50

## Contraction Dowel Cages

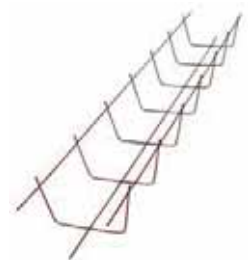
Contraction Dowel Cages are supplied in separate half sections which are placed either side of the joint. They can be used both in road and floor slab construction, and are sold in 1.2 metre lengths and various heights to suit the depth of slab. Other heights to suit deeper slabs are available on request.



Item Code	Description	Height (mm)	Length (mtr)	Pack Size
KF06114DC075CON	Suitable for slab depth 150-180mm	75	1.2	Each
KF06114DC095CON	Suitable for slab depth 190-230mm	95	1.2	Each
KF06114DC115CON	Suitable for slab depth 240-300mm	115	1.2	Each
KF06114DCS75	75mm Connection Sleeve	-	-	100

## Expansion Dowel Cages

Expansion Dowel Cages are supplied in separate half sections which are placed either side of the joint, They can be used both in road and floor slab construction, and are sold in 1.2 metre lengths and various heights to suit the depth of the slab. Other heights to suit deeper slabs are available on request.



Item Code	Description	Height (mm)	Length (mtr)	Pack Size
KF06114DC090EXP	Suitable for slab depth 190-230mm	90	1.2	Each
KF06114DC115EXP	Suitable for slab depth 240-300mm	115	1.2	Each

## Debonding Compound

Debonding Compound is a one-part bitumen based coating designed to coat dowel bars in joints where movement is required. It is applied by brush or dipping, and provides a coverage of 1.8-3.6m<sup>2</sup> per litre.



Item Code	Size (Ltrs)
KJ09431DBAR05	5
KJ09431DBAR25	20

## Top Crack Inducer

The two part PVC Crack Inducer and groove former induces a controlled crack in continuously laid concrete. Its hollow, braced section makes it strong enough to be vibrated direct into wet concrete. The top section can be removed to form a void approximately 25mm deep into which a floor seal can be applied. To work effectively it is recommended that the total depth of the top, or top and bottom crack inducers should be between 1/4 and 1/3 of the total slab thickness.



Item Code	Depth (mm)	Width (mm)	Length (mtr)	Pack Size (mtr)
KF06101CI1050	50	10	5	50
KF06101CI1075	75	10	5	50

## Bottom Y Type Crack Inducer

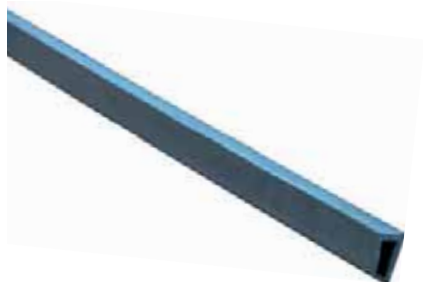
Where slabs exceed 250mm in depth a Bottom Crack Inducer used in conjunction with, and placed immediately below the top crack inducer is recommended. To work effectively it is recommended that the total depth of the top and bottom crack inducers should be between 1/4 and 1/3 of the total slab thickness.



Item Code	Depth (mm)	Length (mtr)	Pack Size (mtr)
KF06101CIBY40	40	5	50
KF06101CIBY75	75	5	50

## Void Former

PVC Void Formers are available in four sizes designed for forming grooves in concrete or nailing to the formwork.



Item Code	Depth (mm)	Width (mm)	Length (mtr)	Pack Size (mtr)
KF06109FMV2010	20	10	3	60
KF06109FMV2020	20	20	3	30
KF06109FMV2512	25	12	3	60
KF06109FMV2525	25	25	3	30

## Woodfibre Fillerboard

Woodfibre Fillerboard is a high performance quality expansion joint for concrete applications. It is manufactured from specially formulated impregnated fibreboard with a minimum 10% bitumen content. It has been specifically engineered to provide the optimum combination of durability and resilience. Typical applications would include concrete paths, foundation slabs, roads and airport runways. It can also be used as a backfill protection board for below ground applications. It is lightweight and can be easily cut on site.



Item Code	Thickness (mm)	Width (mtr)	Length (mtr)	Pack Size
KF06107FBSh12	12	1.2	1.2	Each
KF06107FBSh20	20	1.2	1.2	Each
KF06107FBSh25	25	1.2	1.2	Each

## Polyjoint Filler Coil

Polyjoint Filler Coil is a closed cell polyethylene foam joint filler ideal for expansion joints and wall to floor slab isolation joints. It is conveniently supplied to suit your slab depth and available in 10m coil length in various thicknesses. A tear-off strip allows for sealant.



Item Code	Thickness (mm)	Depth (mm)	Length (mtr)	Pack Size
KF06112PJC10100	10	100	10	Each
KF06112PJC10150	10	150	10	Each
KF06112PJC10175	10	175	10	Each
KF06112PJC12100	12	100	10	Each
KF06112PJC12150	12	150	10	Each
KF06112PJC12175	12	175	10	Each
KF06112PJC12200	12	200	10	Each

## Polyjoint Filler Strip

Polyjoint Filler Strip is a closed cell polyethylene foam joint filler ideal for expansion joints and wall to floor slab isolation joints. It is conveniently supplied to suit your slab depth and available in 2m length strips in various thicknesses. A tear-off strip allows for sealant. In addition to the standard sizes in the table below, special widths and tear-off strips are available on request.



Item Code	Thickness (mm)	Depth (mm)	Length (mtr)	Pack Size
KF06112PJS10100	10	100	2	Each
KF06112PJS10150	10	150	2	Each
KF06112PJS12150	12	150	2	Each
KF06112PJS12200	12	200	2	Each
KF06112PJS20100	20	100	2	Each
KF06112PJS20150	20	150	2	Each
KF06112PJS20175	20	175	2	Each
KF06112PJS20200	20	200	2	Each
KF06112PJS25100	25	100	2	Each
KF06112PJS25150	25	150	2	Each
KF06112PJS25175	25	175	2	Each
KF06112PJS25200	25	200	2	Each
KF06112PJS25250	25	250	2	Each

## Polyjoint Filler Sheet

Polyjoint Filler Sheet is a closed cell polyethylene foam joint filler ideal for expansion joints and wall to floor slab isolation joints. It is supplied in sheets of 1m x 2m for cutting to suit on site.



Item Code	Thickness (mm)	Width (mtr)	Length (mtr)	Pack Size
KF06112PJSH10	10	1	2	Each
KF06112PJSH12	12	1	2	Each
KF06112PJSH15	15	1	2	Each
KF06112PJSH20	20	1	2	Each
KF06112PJSH25	25	1	2	Each

## CombiForm Screed Rails

The CombiForm Screed Rails are made of metal with a plastic strip on the top. They are easy to use, light weight and far more manageable than the traditional concrete rails. The plastic top strip is removable, this allows more flexibility as it can be left in the concrete or stripped off and replaced by different joint material. A top extender can be purchased which will further increase the cover and act as a saw cut.

CombiForm can be used to produce super flat floors and its design boasts superior strength, allowing it to be used with all types of vibration bridges where other similar products would simply buckle under the weight. It is easy to adjust to the correct level using the adjusting screws directly on the ground, or by using a ground plate fixed under the screws in softer surface situations. The rails can also be placed on concrete markers.

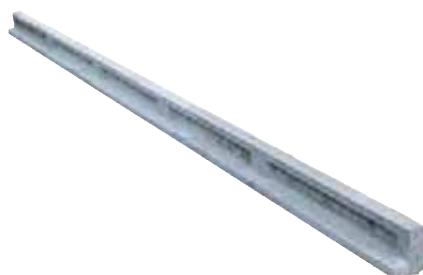
The concrete efficiently penetrates through CombiForm as it is provided with rows of 25mm diameter holes, which also allows reinforcement to pass through. CombiForm is easy to cut in different lengths with an angle cutting machine.



Item Code	Description	Height (mm)	Length (mtr)	Pack Size
KF06108CFORM025	Screed Rail	25	2.2	Each
KF06108CFORM045	Screed Rail	45	2.2	Each
KF06108CFORM065	Screed Rail	65	2.2	Each
KF06108CFORM085	Screed Rail	85	2.2	Each
KF06108CFORM105	Screed Rail	105	2.2	Each
KF06108CFORM125	Screed Rail	125	2.2	Each
KF06108CFORM145	Screed Rail	145	2.2	Each
KF06108CFORMTOP	Top Extender	30	2.2	Each
KF06108CFORMPLT	Ground Plate	-	-	Each
KF06108CFTL1300	Adjustment Tool	-	-	Each
KF06108CFRMS060	Screws - 60mm long	-	-	100
KF06108CFRMS090	Screws - 90mm long	-	-	100

## Concrete Screed Rails

Concrete Screed Rail is manufactured from reinforced concrete with a material strength of 50 N/mm<sup>2</sup>. The need to hire costly roadforms is eliminated by simply screeding off the rails provided which are left permanently in position, bringing further savings in the labour costs normally associated with roadform removal. Adjacent bay construction is also quicker.



Item Code	Height (mm)	Length (mtr)
KF06108CSR100	100	3
KF06108CSR150	150	3

## K-Form uPVC Screed Rails

K-Form uPVC Screed Rail is a simple to use shuttering system that can be laid by just one person. As it is made from durable uPVC there is no heavy lifting and no associated health and safety issues. The three metre beams can be cut quickly to length with a hand saw and no specialist equipment is needed. Once the concrete has been poured K-Form remains in place, so even more time is saved since there is no removing, no cleaning and no storing.



Item Code	Height (mm)	Length (mtr)
KF06108KF85MM	85	3
KF06108KF135MM	135	3
KF06108KFEXRAIL	50	3

Please see the back cover for depot locations



## Steel Topped Concrete Screed Rails

Steel Topped Concrete Screed Rails make it easier to achieve a very straight and fully controlled hairline crack compared to traditional roadform construction.



Item Code	Height (mm)	Length (mtr)
KF06108MSR065	65	3.9
KF06108MSR090	90	3.9
KF06108MSR115	115	3.9
KF06108MSR140	140	3.9
KF06108MSR165	165	3.9

## Metal Screed Chairs

The Metal Screed Chair is supplied in two parts, the height is simply adjusted by turning the stirrup in the base.

There are five sizes to suit various slab depths

- For slab depth 120 - 150mm order Type 1 Base + Type 1 Saddle
- For slab depth 150 - 200mm order Type 2 Base + Type 2 Saddle
- For slab depth 200 - 300mm order Type 3 Base + Type 3 Saddle
- For slab depth 300 - 380mm order Type 4 Base + Type 3 Saddle
- For slab depth 380 - 460mm order Type 5 Base + Type 3 Saddle

Both the base and the saddle should be ordered to complete the Metal Screed Chair.



Item Code	Description	Slab Depth (mm)	Pack Size
KF06110MSCB1	Base - Type 1	120-150	Each
KF06110MSCB2	Base - Type 2	150-200	Each
KF06110MSCB3	Base - Type 3	200-300	Each
KF06110MSCB4	Base - Type 4	300-380	Each
KF06110MSCB5	Base - Type 5	380-460	Each
KF06110MSCS1	Saddle - Type 1	-	Each
KF06110MSCS2	Saddle - Type 2	-	Each
KF06110MSCS3	Saddle - Type 3	-	Each

## Plastic Screed Chairs

Plastic Screed Chairs are ideal for light duty applications. They are fully adjustable and being manufactured in plastic may be left in concrete, either in part or as a complete unit, without fear of corrosion. It is not advisable to use chairs in bays over four metres wide and we would recommend placement of 500mm centres. For heights over 150mm the base of the chair should be placed in a 'blob' of concrete for greater stability.



The plastic screed chairs are supplied in three parts

- Plastic Screed Chair Base
- Plastic Screed Chair Collar
- Plastic Screed Chair Saddle

Item Code	Description	Pack Size
KF06110PSCBAS	Base	100
KF06110PSCCOL	Collar	100
KF06110PSCSAD	Saddle	100

## Waxed Card Bolt Boxes

Waxed Card Bolt Boxes enable easy bolt location adjustment with minimum displacement of reinforcement and concrete. For the ease of stripping and re-use 25mm of the box should be left protruding and rotated before the concrete has completely set.



Item Code	Depth (mm)	Pack Size
KO13719CBB09	229	Each
KO13719CBB12	305	Each
KO13719CBB15	380	Each
KO13719CBB18	457	Each
KO13719CBB21	534	Each
KO13719CBB24	610	Each
KO13719CBB30	782	Each

## Voidform Plastic Bolt Box



The Voidform Plastic Bolt Box is used in the same way as conventional bolt boxes and requires no specialist training or preparation. The plastic bolt box has been designed to overcome the numerous inherent difficulties and problems that can occur when using existing systems. It is essentially a polypropylene cone with an integrated chamber to house the base plate and bolt.

The bolt box is available in the 'one size suits all' form to simplify ordering and on-site use. A top cap with central hole is provided as a separate piece to complete the unit. The main body of the cone is marked for easy identification of the required length and the top cap will accommodate all variations of length.

The bolt box offers savings in time and money as well as providing a clean, debris free work area.

Item Code	Depth (mm)	Pack Size
KO13855PLASBBOX	375	Each

## Non-Woven Geotextile - Multitrack 1000

Multitrack 1000 is one of the most commonly specified general purpose non-woven geotextiles and is our alternative to Terram® T1000 GT. It provides excellent separation and filtration properties, making it ideal for use in a variety of construction applications.

### Applications for Multitrack 1000

- Separating/strengthening of layers under access roads and areas of hard standing.
- Filter surround for trench drains.
- Separation to stop the intermixing of dissimilar soil layers.
- Filtration - allowing the flow of water whilst preventing the passage of soil.
- Horse arenas - separation of infill materials.
- Filter surround for infiltration tanks.

Item Code	Pack Size
KF06113MULTITRA	Each

## Woven Geotextile - Fastrack 609

Fastrack 609 is one of the largest selling general purpose geotextiles in the UK. Designed and manufactured to conform to the old Department of Transport & Highways specification for road and earthworks separation. It provides a cost effective solution for separation and filtration for the general building and domestic markets.

### Applications for Fastrack 609

- Separating/strengthening of layers under access roads and areas of hard standing.
- Separation of layers under stone foundations for new buildings.
- Separation of layers under new roads, car parks & industrial areas.
- Separation of granular fill from sub soils and other fill types.

Item Code	Pack Size
KF06113FASTRACK	Each

## Concrete Rake

A Dual Face Concrete Rake with a lightweight magnesium head and straight broom handle.



Item Code	Pack Size
KF06114CONCRAKE	Each

Please see the back cover for depot locations





## Formwork Threaded Tie Bar

Formwork Threaded Tie Bar is produced from high tensile steel with a screw thread (deformation conforming to ASTM A 618 for reinforcing steel bars). It is available for both 15mm and 20mm systems, and is supplied in standard lengths of 2mtrs, 3mtrs or 6mtrs.



Item Code	Dia (mm)	Length (mtr)
KG07101DIB6000	15	6
KG07101DIB3000	15	3
KG07101DIB2000	15	2
KG07101DIB6M/20	20	6
KG07101DIB20/3M	20	3

## Pressed Waler Plate

The Pressed Waler Plate is used for timber or steel walings in conjunction with a wing nut or a hex nut for load transfer. The embossing of the plate increases its rigidity. It is available for both 15mm and 20mm systems.



Item Code	For System (mm)	Pack Size
KG07101DIWAST	15	Each
KG07101DIWAST20	20	Each

## Wing Nut

With different waler plates, the Wing Nut can be used as an anchor nut both for timber and steel walings. It can be fixed and loosened using a hexagon wrench or a threadbar, and is available for both 15mm and 20mm systems.



Item Code	For System (mm)	Pack Size
KG07101DIWIN	15	Each
KG07101DIWIN20	20	Each

## Hex Nut

Similar to wing nuts, the Hex Nut can be used as an anchor nut in conjunction with a waler plate.



Item Code	For System (mm)	Pack Size
KG07102HEXNUT25	15	Each

## Tie Bar Connector

The Tie Bar Connector is used for the force-fit connection of two threadbars. A stop pin in the middle of the connector ensures an equal screwing-in length of both bars. It is available for both 15mm and 20mm systems.



Item Code	For System (mm)	Pack Size
KG07101DICON	15	Each
KG07101DC20	20	Each

### Water Barrier Connector

The Water Barrier Connector is used for water retaining purposes between concrete walls, to fill any cracks which exist.



Item Code	For System (mm)	Pack Size
KG07101DIWCON	15	Each

### Thruty Sleeve

Thruty Sleeve is a rigid PVC tube of 2mm wall thickness, supplied in two metre lengths, which can be easily cut to the required size on site. It is used as a sacrificial sleeve over tie bars, facilitating their removal and also acting as a spacer to ensure the correct width of wall. It is available in either a smooth or rough sleeve, and with sizes for both the 15mm and 20mm tie bar system.



Item Code	For System (mm)	Length (mtr)	Finish	Pack Size (mtr)
KG07101TS2226S	15	2	Smooth	100
KG07101TS2226	15	2	Rough	100
KG07101TS2630	20	2	Rough	50

### Thruty Cones

Thruty Cones are used at the ends of the thruty sleeve and can be easily extracted after removal of the formwork to form a chamfered recess for subsequent grouting.



Item Code	For System (mm)	Pack Size
KG07101CON20	15	500
KG07101CON22	15	500
KG07101CON26	20	500

### Rubber Stoppers

Rubber Stoppers are made in a variety of sizes from resilient synthetic material which is non-biodegradable. They are widely used in reservoirs and sewage treatment works as a backing where grouting is necessary.



Item Code	For System (mm)	Pack Size
KG07102AQUFIX20	15	1,000
KG07102AQUFIX22	15	1,000
KG07102FLUPP22	15	500
KG07102AQUFIX26	20	1,000
KG07102AQUFIX32	20	500

## Flexible PVC Tie Bar Hose

Flexible PVC Tie Bar Hose is supplied in convenient 30 metre coils as a cheap alternative to thru tie sleeve, and can be extracted after use. It is available for both the 15mm and 20mm tie bar systems.



Item Code	For System (mm)	Pack Size (mtr)
KG07101HOS1925	15	30
KG07101HOS2531	20	30

## Multi-Purpose Hole Filler

Our Multi-Purpose Hole Filler is applied with a trowel, and is primarily used for the filling of tie-holes formed by formwork bolts in new construction, particularly where a rapid setting, durable, waterproof mortar is required. It can also be used for sealing grout holes and voids around fixings in precast elements. Sold in 8kg tubs, when mixed with 850ml of water, it has a yield of four litres of filler, which will fill approximately 150-200 holes.



Item Code	Size (Kg)
KJ09101TSEL08	8

## Plastic Chamfer Edge Profile - Plain

Plastic Chamfer Edge Profile is an extruded plastic section for forming chamfered corners to columns and beams. The plain profile has no nailing flange.



Item Code	Width (mm)	Length (mtr)	Pack Size (mtr)
KG07102CEP15PLN	15	2.5	100
KG07102CEP20PLN	20	2.5	100
KG07102CEP25PLN	25	2.5	100
KG07102CEP30PLN	30	2.5	50

## Plastic Chamfer Edge Profile - Flanged

Plastic Chamfer Edge Profile is an extruded plastic section for forming chamfered corners to columns and beams. The nailing flange provides easy fixing to corner moulds and safe stripping, thus ensuring maximum re-use.



Item Code	Width (mm)	Length (mtr)	Pack Size (mtr)
KG07102CEP11FLG	11	2.5	100
KG07102CEP15FLG	15	2.5	100
KG07102CEP20FLG	20	2.5	100
KG07102CEP25FLG	25	2.5	100
KG07102CEP30FLG	30	2.5	50

### Steel Chamfer Edge Profile

Hot rolled Steel Chamfer Edge Profile is straightened and cut, and is used for forming chamfered edges in precast concrete structures. It is easily weldable and in particular is suitable for steel formwork, and is supplied in standard four metre lengths.



Item Code	Width (mm)	Length (mtr)	Pack Size
KG07102STECHA10	10	4	Each
KG07102STECHA15	15	4	Each
KG07102STECHA20	20	4	Each
KG07102STECHA25	25	4	Each

### Single Sided Jointing Tape

Single Sided Jointing Tape is a specially developed matt finish waterproof pressure-adhesive PVC tape for use on all types of concrete formwork. It offers excellent adhesion even where residual release agent is present on the form face.



Item Code	Width (mm)	Roll (mtr)	Pack Size
KG07102NT5027	50	27	Each
KG07102NT10027	100	27	Each
KG07102NT5033	50	33	Each
KG07102NT7533	75	33	Each

### Double Sided Jointing Tape

The Double Sided Jointing Tape is waterproof and pressure sensitive. It is ideal for use on polythene sheet or formwork joints. It is 50m long and available in widths of 50mm or 75mm.



Item Code	Width (mm)	Roll (mtr)	Pack Size
KG07102DBST50	50	50	Each
KG07102DBST75	75	50	Each

### Silver Cloth Duct Tape

Silver Cloth Duct Tape is suitable for many site applications. It is 50m long and available in widths of 50mm or 75mm.



Item Code	Width (mm)	Roll (mtr)	Pack Size
KG07102DUCTTP50	50	50	Each
KG07102DUCTP75	75	50	Each

## Shutter Foam

Shutter Foam is a foam tape with pressure adhesive on one side. It is suitable for sealing joints in formwork which are inaccessible for the application of shutter tape such as butt joints.



Item Code	Width (mm)	Roll (mtr)	Pack Size
KG07102NF031225	3	25	Each
KG07102NF061212	6	12	Each
KG07102NFGREY	6	12	Each

## Concrete Rubbing Block

The Concrete Rubbing Block is a carborundum stone for smoothing imperfections in concrete.



Item Code	Pack Size
KG07102RUBBLOCK	Each

## Form Anchor

The Form Anchor is versatile, non-corrosive and used mainly for securing single-sided and climbing formwork. It is easily fixed using the plastic cone locator enabling quick formwork erection, with no drilling of plywood. It can also be used for securing slab edge formwork, guard rails, etc. For use with 15mm tie bars.



Item Code	Pack Size
KG07102ANCHORS	Each

## Rock Anchor

Rock Anchors are used for securing single sided formwork to an existing concrete structure.



Item Code	Pack Size
KG07101ROCKANC	Each

## Polyform Formwork System

Polyform is a high performance corrugated polypropylene shuttering system 7.5mm thick, which combines the benefits of permanent formwork with protection against contaminated ground. Supplied to the customer specification, Polyform offers considerable benefits over traditional formwork methods.



### Key features and benefits

- ⦿ Lightweight and easy to use, reducing labour requirements and improving safety.
- ⦿ Quick and simple to install.
- ⦿ No removal required, speeding the construction process.
- ⦿ Provided in full size sheets, strips, L-shapes or U-shapes; whatever your specification.
- ⦿ Can be used for trenches and pile caps.
- ⦿ Cut, creased and delivered within three to four working days in most cases.

### Polyform can provide part of a solution to offer protection against

- ⦿ General groundwater.
- ⦿ Contaminated ground and ground water.
- ⦿ Gases such as methane, radon and carbon dioxide.

Polyform shuttering can be supplied as full sheets of 4.4m x 2.4m, or as 'U' shapes, 'L' shapes and strips cut to size.

## Paceform Welded Mesh Formwork System

Paceform is a steel mesh reinforced polyethylene shuttering system for use in foundations. Lightweight and easy to use, Paceform can save time and money compared with traditional methods.



### Key features and benefits

- ⦿ Supplied pre-formed to specific requirements.
- ⦿ Can eliminate blinding concrete.
- ⦿ Can reduce evacuation width and therefore spoil removal.
- ⦿ Quick to install, speeding up the construction process.
- ⦿ No need to remove the formwork - one less activity.
- ⦿ Full take-off/scheduling service available.
- ⦿ Site support can be provided.

Paceform can be supplied as 'U' shapes to eliminate the blinding concrete. It can also be supplied as 'L' shapes to the sides only, which may prove more economical on wider sections.

## Hy-Rib Stop End

Hy-Rib is an expanded metal sheet product, specifically developed for use as permanent formwork to concrete. The profile of the open mesh, in combination with the Hy-Rib tangs, allow the development of dense concrete nodules and indents on the face of the Hy-Rib, forming an enhanced mechanical key for the second phase pour. In the case of visible elements, the resulting Hy-Rib surface is suitable to receive a rendered or tiled finish.



Item Code	Steel Thickness (mm)	Sheet Length (mtrs)	Pack Size
KG18111HY242000	0.4	2	Each
KG18111HY243000	0.4	3	Each
KG18111HY244000	0.4	4	Each
KG18111HY245000	0.4	5	Each
KG18111HY262000	0.5	2	Each
KG18111HY263000	0.5	3	Each
KG18111HY264000	0.5	4	Each
KG18111HY265000	0.5	5	Each
KG18111HY282000	0.6	2	Each
KG18111HY283000	0.6	3	Each
KG18111HY284000	0.6	4	Each
KG18111HY285000	0.6	5	Each

## Column Formers

Circular Lined Column Formers can be purchased in a variety of diameters ranging from 150mm upto 1200mm and are made to order to the lengths required.



### Designs

- ⊙ **Lined** - Column formers have a PVC liner which is fitted the whole length of the inner diameter of the column former, this provides an impeccably smooth finish. They will only leave a hairline seam on the concrete from the point where the liner joint meets.
- ⊙ **Unlined** - Column formers are also available unlined for applications where surface finish is not critical. This column former will leave a spiral effect on the finished column.
- ⊙ **Square** - We can offer square or rectangular columns on request, made from our standard column former with an additional polystyrene insert, manufactured to your specific requirements.

### Advantages

- ⊙ Light and easy to handle as opposed to steel shuttering.
- ⊙ Labour saving.
- ⊙ Easy to strip, no mould oils required.
- ⊙ Quality, fair faced finish.
- ⊙ Can be used for protective cover for the completed columns.

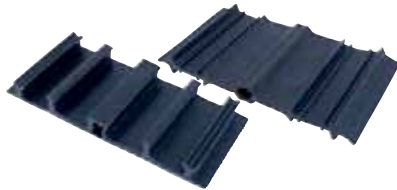
Item Code	Tube I/D (mm)	Tube Wall (mm)	Max Pour Height (mtr)	Concrete Required (m3/ mtr)	Weight (Kg/mtr)	Pack Size
KR15103CF150GN	150	2.8	6	0.018	1.24	Each
KR15103CF200GN	200	2.8	6	0.031	1.63	Each
KR15103CF250GN	250	3.2	6	0.049	2.08	Each
KR15103CF300GN	300	3.2	6	0.071	2.38	Each
KR15103CF350GN	350	3.7	6	0.096	3.09	Each
KR15103CF400GN	400	4.1	6	0.126	3.52	Each
KR15103CF450GN	450	4.1	6	0.159	4.50	Each
KR15103CF500GN	500	4.6	6	0.196	5.44	Each
KR15103CF550GN	550	4.6	6	0.237	5.99	Each
KR15103CF600GN	600	5.0	6	0.283	6.53	Each
KR15103CF650GN	650	5.0	4	0.332	7.16	Each
KR15103CF700GN	700	5.0	4	0.385	7.71	Each
KR15103CF750GN	750	5.0	4	0.442	8.26	Each
KR15103CF800GN	800	5.5	4	0.502	8.81	Each
KR15103CF850GN	850	5.5	4	0.567	9.36	Each
KR15103CF900GN	900	5.5	4	0.636	9.91	Each
KR15103CF950GN	950	5.5	4	0.708	10.46	Each
KR15103CF1000GN	1000	5.9	4	0.785	11.11	Each
KR15103CF1100GN	1100	5.9	4	0.950	12.11	Each
KR15103CF1200GN	1200	5.9	4	1.130	13.21	Each

### RFA-Tech PVC Waterstops

The RFA-Tech range of PVC Internal and External Waterstops are designed to provide an integral sealing system for movement and construction joints in concrete cast in-situ.

**Internal PVC Waterstops** are specifically developed with their unique rib and bulb profiles, to provide a totally effective water barrier when cast centrally within wall and floor joints. They have been tested to withstand ingress of water in construction and expansion joints in water retaining and excluding structures.

**External PVC Waterstops** are high performance profiles, specifically developed to seal joints in concrete structures at the outside surface, thus preventing the reinforcing steel against corrosion attack, in addition to providing a totally watertight seal. They have been independently tested to withstand ingress of water in construction, expansion and kicker joints in water retaining and excluding structures.



Item Code	Type	Width (mm)	Roll Length (mtr)
KW21115INT20015	Internal	200	15
KW21115INT25012	Internal	250	12
KW21115EXT20015	External	200	15
KW21115EXT25012	External	250	12

### Fosroc Supercast PVC Waterstops

The Fosroc Supercast range of PVC Internal and External Waterstops are designed to provide an integral sealing system for movement and construction joints in concrete cast in-situ.

**Internal Supercast Hydrofoil** centre bulb sections are used in expansion, contraction and construction joints. The centre bulb allows for movements in a structure to be accommodated, whilst its hexagonal design provides a flat surface. This allows shuttering and joint fillers to fit snugly.

**External Supercast Rearguard S** sections incorporate a flat top centre box which allows movement to be accommodated in expansion joints. The centre box also provides a seating to support joint fillers. They can also be used in both contraction and construction joints.



Item Code	Type	Width (mm)	Roll Length (mtr)
KW21115HYDRO150	Internal	150	15
KW21115HYDRO200	Internal	200	12
KW21115HYDRO250	Internal	250	12
KW21115REARG150	External	150	12
KW21115REARG200	External	200	12
KW21115REARG250	External	250	12

### PVC Waterstop Hot Knife

The PVC Waterstop Hot Knife is used to assist the on-site jointing of all of our PVC waterstops. It is used to provide high quality joints, ensuring a watertight continuation of the PVC waterstop network being installed.



Item Code	Pack Size
KW21115HOTKNIFE	Each

### PVC Waterstop Jointing Jig

The PVC waterstop Jointing Jig is used to assist the on-site jointing of all of our PVC waterstops. It is used to provide high quality joints, ensuring a watertight continuation of the PVC waterstop network being installed.



Item Code	Pack Size
KW21115WSJIG250	Each

For further information please refer to our Waterproofing, Concrete Protection and Repair brochure.

Please see the back cover for depot locations





## Bentorub

Bentorub is a green, flexible hydrophilic bentonite strip used for the sealing of construction joints in concrete. It is made from natural bentonite clay and synthetic rubber. Bentorub is designed for sealing construction joints, cold joints and working joints in concrete, around pipe penetrations, in sewer joints, against slurry walls and sheet piling, etc.

Bentorub has a proven track record in water treatment plants, water purification plants, underground parking lots, water reservoirs, swimming pools, water tanks, metro-works and other concrete structures subject to high water pressure up to 8 bar. The strip can be easily installed by nailing 4 to 5 nails per metre or glued with Contact Adhesive, Swellseal Mastic or Bentoglue. It is recommended to protect the Bentorub strip using the Bentorub fixing cage.



Item Code	Depth (mm)	Width (mm)	Roll Length (mtr)
KW21104BRUB2025	20	25	5

## Swellseal Joint

Swellseal Joint is a co-extruded, vulcanised hydrophilic rubber strip used primarily for sealing joints in precast elements. It can also be used for sealing construction joints, pipe penetrations and joints in underground precast elements and structures. The ridged finish ensures a good adhesion to concrete, and it can be easily installed by nailing 4 to 5 nails per metre, or glued with Swellseal Mastic or Contact Adhesive in horizontal applications.



Item Code	Depth (mm)	Width (mm)	Roll Length (mtr)
KW21110SEALJNT	7	25	10

## Swellseal 3V

Swellseal 3V is a tough, hydrophilic waterproofing strip made from a combination of an elastomer and a hydrophilic resin. It can be used for sealing joints between concrete precast elements, horizontal and vertical construction joints, sealing pipe penetrations, sealing concrete to steel joints and tunnel segments. It requires a minimum of 100mm concrete cover on all sides.



Item Code	Depth (mm)	Width (mm)	Roll Length (mtr)
KW21110SEAL3VF	5	20	15

## Dual Seal Bentonite Waterstop

Dual Seal Waterstop is a Bentonite/HDPE based waterstop which reacts in contact with water by swelling to form a watertight seal in concrete structures. It can be installed directly onto scabbled surfaces and will swell into voids up to 12mm deep. It has been independently tested up to 30 metre head of water, has full WRAS approval for use with potable water, and can be applied to green concrete and in damp conditions.



Item Code	Depth (mm)	Width (mm)	Roll Length (mtr)
KW21110DSWS	7	25	8

## Hydrotite

Hydrotite is the original expanding rubber seal, used in a variety of applications for sealing joints against water penetration. It is a hydrophilic waterstop which exhibits excellent durability and water sealing capacity, it expands as it absorbs water and fills up concrete joint gaps conforming to the gap variation, ensuring excellent sealing.

Hydrotite CJTA is an advanced formulation of Hydrotite CJ that reduces premature expansion before installation, even on contact with moisture. Only in the alkaline conditions found in fresh concrete will Hydrotite CJTA start absorbing water, making it ideal on projects where higher than average rainfall or groundwater levels are expected, or where there may be a delay between application and the second concrete pour.



Item Code	Depth (mm)	Width (mm)	Roll Length (mtr)
KW21110CJ0725	7	25	10
KW21110CJTA20X5	5	20	10

## Swellseal Mastic

Swellseal Mastic is a one-component, polyurethane based, solvent free, hydro-swelling mastic. It is used for the sealing of construction joints and around pipe penetrations and can also be used as an adhesive to secure other waterstops.



Item Code	Pack Size
KW21110SSEALMAS	310 ml

## Skeleton Gun

The Skeleton Gun is for use with all types of 310ml cartridge.



Item Code	Pack Size
KW21120SKELGEN	Each

## Contact Adhesive

Contact Adhesive is used for the installation of self-swelling waterstops.



Item Code	Size (Ltrs)
KW21110SEALCON	1

## Bentorub Fixing Cage

Bentorub Fixing Cage is a galvanized steel wire mesh used for the secure installation of Bentorub in horizontal and vertical applications.



Item Code	Pack Size (mtr)
KW21110BCAGE	30


For further information please refer to our Waterproofing, Concrete Protection and Repair brochure.


Please see the back cover for depot locations





Self-Adhesive Waterproofing Membranes are designed to provide a continuous, self-bonding, waterproof system for below ground structures, subways and retaining walls, preventing the passage of vapour and water.

Self-Adhesive Waterproofing Membranes consist of a self-bonding, polymer modified bitumen, which is covered on one side by a tough multi-ply, cross laminated polythene film and protected on the other side by a release sheet which is removed prior to the bonding of the material on to a suitably prepared substrate. Once the release sheet has been removed, the membrane can be easily applied by roller pressure.

Brand	System	Pack Details
	<b>Bitusheet XL Waterproofing Membrane</b>	1.05m x 19.05m roll (20m <sup>2</sup> )
	<b>Bitusheet Standard Primer</b>	5ltr can or 25ltr drum. Coverage: 5-7m <sup>2</sup> /ltr
	<b>Bitusheet HP Primer</b>	5ltr can or 25ltr drum. Coverage: 5-7m <sup>2</sup> /ltr
	<b>Bituthene LM</b>	5.7ltr pack
	<b>Foam Angle Fillet</b>	40mm x 40mm x 1m length
	<b>Bitusheet Reinforcing Strip</b>	300mm x 20m roll
	<b>3mm Bitusheet Protection Board</b>	3mm x 1m x 2m
	<b>6mm Bitusheet Protection Board</b>	6mm x 1m x 2m
	<b>Double Sided Bitumen Tape</b>	50mm x 15m roll

Brand	System	Pack Details
	<b>Proofex 3000 Waterproofing Membrane</b>	1m x 20m roll (20m <sup>2</sup> )
	<b>Proofex Primer</b>	5ltr can or 25ltr drum. Coverage: 5-7m <sup>2</sup> /ltr
	<b>Proofex Engage Detail Strip</b>	200mm x 10m roll
	<b>2mm Proofex Protection Board</b>	2mm x 1m x 2m
	<b>3mm Proofex Protection Board</b>	3mm x 1m x 2m
	<b>Proofex LM</b>	28kg pack

Brand	System	Pack Details
	<b>Bituthene 3000</b>	1m x 20m roll (20m <sup>2</sup> )
	<b>Bituthene 4000</b>	1m x 20m roll (20m <sup>2</sup> )
	<b>Bituthene 4000DW</b>	1m x 20m roll (20m <sup>2</sup> )
	<b>Bituthene 8000</b>	1m x 20m roll (20m <sup>2</sup> )
	<b>B1 Primer</b>	5ltr can or 25ltr drum. Coverage: 5-7m <sup>2</sup> /ltr
	<b>Bituthene GP</b>	25m x 1m roll
	<b>Bituthene LM Detailing Compound</b>	5.7ltr pack
	<b>Bituthene Protection Board</b>	3mm x 0.9m x 2.03m
	<b>Bitustik 4000 Double Sided Tape</b>	150mm x 12m

Brand	System	Pack Details
	<b>Sheetseal 226 Waterproofing Membrane</b>	1.05m x 19.05m roll (20m <sup>2</sup> )
	<b>Sheetseal Primer</b>	5ltr can or 25ltr drum. Coverage: 5-7m <sup>2</sup> /ltr
	<b>Sheetseal Reinforcing Strip</b>	300mm x 20m roll
	<b>RIW Protection Board</b>	3mm x 0.9m x 2.02m

For further information please refer to our Waterproofing, Concrete Protection and Repair brochure.

## Dual Seal Bentonite Membrane

Dual Seal Bentonite Membrane is a premium, high performance, self-swelling and self-healing waterproofing membrane comprising a tough, high density polyethylene membrane sheet laminated to 4kg/m<sup>2</sup> of quality Bentonite granules. It requires no primer, no protection board or heat welding.



Item Code	Membrane Thickness (mm)	Roll Width (mtr)	Roll Length (mtr)
KW21104DSMEM	5	1.22	7.32

## Bitusheet XL Overlap Tape

Bitusheet XL Overlap Tape is an adhesive bitumen based tape used for reinforcing all internal and external edges, intersections and roof expansion joints. The 100mm width is used to seal the overlaps of Dual Seal membrane and also protect the cut end overlaps of Bitusheet gas barrier membrane.



Item Code	Width (mm)	Roll Width (mtr)
KW21104XLTAPE10	100	20

## Dual Seal Mastic

Dual Seal Mastic is a trowable mastic, comprising a special formulation of expandable minerals and an elastomeric compound, which expands and stiffens when in the presence of water. It is used to bed-in angle fillets, the sealing of pipe penetrations, filling voids, tie holes and honeycombing prior to installation of Dual Seal.



Item Code	Size (Ltrs)
KW21120DSEALMAS	19

## Dual Seal Granules

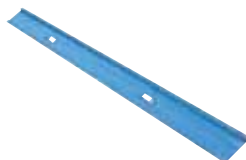
Dual Seal Granules are a high swelling sodium bentonite in granular form which react in contact with water to form an impervious gel. The granules are used to form an angle fillet and the sealing of voids and pipe entries.



Item Code	Weight (kg)	Yield (Ltrs)
KW21120DSGRAN	22.7	23.6

## Dual Seal Termination/Fixing Strip

The Dual Seal Termination/Fixing Strip is used to hold the vertical hanging Dual Seal membrane against the wall. It is used to ensure the membrane is retained flat against the vertical wall surface, and is supplied in three metre lengths.



Item Code	Pack Size (mtr)
KW21120DSFXSRP3	3

For further information please refer to our Waterproofing, Concrete Protection and Repair brochure.

Please see the back cover for depot locations





Pre-Applied Waterproofing Membranes are designed to bond and remain in place to poured concrete.

## Fosroc Proofex Engage

Proofex Engage is a pre-applied waterproofing membrane which mechanically bonds to poured concrete, remaining in place if settlement of substrate occurs.

A unique patented waterproofing membrane for a range of waterproofing applications including basements and substructures. Proofex Engage provides a water, water vapour and gas protection to water excluding structures, and protects concrete from aggressive ground salts and chemicals.

Proofex Engage comprises a complex mesh bonded to polyethylene membrane, which allows poured concrete to interlock with the membrane, forming a tenacious mechanical bond.



Product	Pack Details
Proofex Engage	1.27m x 30m x 5mm
Proofex Detail Strip	200mm x 10m x 1.5m
Proofex L Section	250mm x 5m
Proofex LM	28kg pack

## Grace Preprufe 300R & 160R

Preprufe 300R and 160R membranes are unique composite sheets comprising a thick HDPE film, an aggressive pressure sensitive adhesive and weather resistant protective coating. The unique Preprufe membrane's bond to concrete prevents ingress or migration of water around the structure.

**Preprufe 300R** is a heavy duty grade for use below slabs and on rafts, e.g. mud slabs. It is designed to accept the placing of heavy reinforcement using conventional concrete spacers.

**Preprufe 160R** is a thinner grade for blindside, zero property line applications against soil retention systems.

Preprufe 300R & 160R membranes are applied either horizontally to smooth prepared concrete, carton forms, well rolled and compacted earth, or crushed stone substrate; or vertically to permanent formwork or adjoining structures. Concrete is then cast directly against the adhesive side of the membranes. The specially developed Preprufe adhesive layers work together to form a continuous and integral seal to the structure.



Product	Pack Details
Preprufe 300R	1.2m x 30m
Preprufe 160R	1.2m x 35m
Preprufe LT Tape	100mm x 15m roll
Bituthene LM	5.7ltr pack

For further information please refer to our Waterproofing, Concrete Protection and Repair brochure.

## Liquid Applied Membranes

RFA-Tech supplies a range of liquid compounds used to waterproof underground structures and to assist in sealing the intricate details of other waterproofing systems.

Brand	Product	Description	Pack Details	Coverage
	Bitusheet Asphaltic Compound	Bitusheet Asphaltic Compound is used in two coats to provide a damp proof membrane in solid floors or for protecting foundations, retaining walls, abutments, beams and similar structures against moisture and attack from sulphates contained within the soil.	25ltr drums	1st coat = 1.5m <sup>2</sup> /ltr 2nd coat = 2.5m <sup>2</sup> /ltr
	Bituthene LM	Bituthene LM is a two component elastomeric liquid applied detailing compound. It is designed to compliment Grace sheet systems where liquid applied waterproofing is necessary to ensure watertight continuity.	5.7ltr pack	2.5mm x 300mm = 7.6m per pack  20mm fillet = 28.4m per pack
	Liquid Asphaltic Composition	RIW Liquid Asphaltic Composition is a two coat, cold applied damp proof membrane, which dries to a black gloss finish. The coating is a solution of natural and petroleum bitumens in white spirit. It is typically used as a damp proof membrane to ground floors, as a vapour barrier behind cladding and for tanking of basements.	5ltr, 25ltr & 205ltr containers	1m <sup>2</sup> /ltr (2 coats)
	Toughseal	RIW Toughseal is a solvent free polymer modified epoxide coating, supplied as a two-part pack base and hardener, in pre-measured proportions. It is typically used to provide a water and water vapourproof barrier, or to give protection against abrasion, fresh and saltwater, carbon dioxide, alkalis and dilute mineral acids.	5ltr & 20ltr packs (two part)	2m <sup>2</sup> /ltr (2 coats)
	Flexiseal	RIW Flexiseal is a solvent free thixotropic liquid base on urethane pre-polymers, which in contact with atmospheric moisture, cures to give a continuous tough, rubber-like coating. As a system, it is used in all situations where a high performance tanking or damp proof membrane is required. RIW Flexiseal Primer is used to seal porous or contaminated surfaces, and to aid adhesion of the membrane.	6kg & 25kg containers	1m <sup>2</sup> /kg (2 coats)
	Hydrocoat	RIW Hydrocoat is a cold applied, fast drying, two coat black bitumen coating, which dries to form a water and a water vapour barrier. It is used as a barrier against water and water vapour. Typical uses include the protection of iron and steel against corrosion and concrete structures against ground water. The coating may also be used to line tanks where potable water is to be stored.	5ltr, 25ltr & 205ltr containers	3m <sup>2</sup> /ltr (2 coats)
	Proofex LM	Proofex LM is a two component bituminous rubber emulsion with special hydraulically hardening fillers used to waterproof external underground structures and intricate details such as pipe entries and covings.	28kg pack	4-6kg/m <sup>2</sup> (normal loadings)

For further information please refer to our Waterproofing, Concrete Protection and Repair brochure.

Please see the back cover for depot locations



## Cementitious Waterproof Coatings

RFA-Tech supplies a range of cementitious coatings which provide waterproof and protective barriers for concrete, brick and blockwork surfaces.

Brand	Product	Description	Pack Details	Yield / Coverage
	Cementitious Coat 851 Surface Protection	Designed for internal and external structural waterproofing of concrete and other mineral substrates. It resists positive and negative pressure under 100m head in water retaining and below ground structures, as well as roofs and decks. Provides chloride protection on highway and coastal structures and enhances the durability of reinforced concrete by reinstating effective cover to achieve the specified design life.	30kg Pack	16ltrs
	Cemprotec E942	Provides a hard, durable coating with excellent resistance to water, chloride ions, oxygen and aggressive chemicals. Can be used as a stand-alone anti-corrosion coating for ferrous metals as well as waterproofing and protection of concrete, where enhanced chemical and abrasion resistance is needed. It is pre-packaged in convenient and easy to handle sizes and requires only mixing on site.	15kg Pack 30kg Pack	8ltrs 16ltrs
	Cemprotec Elastic	An elastomeric, cementitious modified coating, which maintains its flexibility under permanent immersion and when exposed externally. It is ideally suited for waterproofing and protecting concrete and masonry structures which exhibit cracking and where further movement is expected. Typical applications include the sealing of water tanks and waterproofing of exposed or buried roofs.	White: 15kg Pack Grey: 30kg Pack	9ltrs 18ltrs
	Cemprotec 2000-S	An advanced, elastomeric, highly tear resistant, breathable, waterproof composite tape. Gives a highly flexible, impermeable seal over live cracks and expansion or construction joints in waterproofing applications.	12cm x 10m Roll 12cm x 50m Roll 20cm x 50m Roll	-
	Aquatek Super XA	High performance, easy to use cement-based slurry for waterproofing concrete surfaces with negative water pressure during application. When mixed with water and applied to a concrete surface it waterproofs and permanently seals through saturation of the capillaries.	25kg Pack	16m <sup>2</sup>
	Aquatek Elastic 2C	A two component coating containing cement, selected silicas, fibres, modifiers and water-based acrylic liquid. It cures into a flexible, waterproof coating which allows movement up to 0.6mm to 1.2mm if reinforced with reinforcement mesh.	32kg Pack	8m <sup>2</sup>
	Nitocote CM210	A flexible cementitious coating, used for waterproofing water retaining structures and water excluding structures. A two component polymer modified coating supplied in a pre-packaged form designed to be easily mixed on site using a slow speed drill and mixing paddle.	23.2kg Pack	12.5m <sup>2</sup>
	Sika 1	Prebatched kiln dried blends of specially graded aggregates and cements packaged in 4 grades at the appropriate mix ratios for optimum application performance and durability. All mortars supplied with coloured band. Spritz Mortar – Red band Render Mortar – Brown band Finishing Mortar – Green band Screed Mortar – Blue band	Mortars: 25kg Bag Liquid Admixture: 25 Litre Drum	-
	Top Seal-107	A two-part polymer modified cementitious waterproof mortar slurry, comprising a liquid polymer and a cement based mix incorporating special admixtures.	25kg Pack	12.5ltrs

For further information please refer to our Waterproofing, Concrete Protection and Repair brochure.

## Uraflex One Part Polyurethane

Uraflex is a high movement elastomeric sealant supplied in 600cc foil containers ready for immediate use. It has been tested for use in contact with drinking water and has excellent adhesion properties when used in conjunction with PU Primer 100. It should be used to seal expansion, contraction and construction joints in concrete reservoirs, water treatment works, pumping stations, sewage treatment works, canals and joints in brick and block construction.



Item Code	Description	Pack Size
KW21125URAFLEX	Uraflex One Part Polyurethane	600cc
KW21125PRIMPU100	Primer PU 100	1ltr
KW21125BARREL600	Barrel Gun	Each

## Thioflex One

Thioflex One is a one part, gun applied, moisture activated, polysulphide sealant. It is ideal for sealing joints in window and door frame surrounds and as a capping for beaded glazing systems. It can also be used for sealing joints in external walls and cladding.



Item Code	Description	Pack Size
KW21120THFLEX1	Thioflex One 380ml cartridge	Each
KW21126PRIM7	Thioflex Primer 7 - 50ml pack	Each
KJ09651APPLICAT	Applicator Gun 380ml	Each

## Colpor 200PF

Colpor 200PF is used for the sealing and maintenance of joints in concrete roads, concrete runways and hard standings. It is particularly suitable for sealing areas where fuel and oil spillage might occur such as aircraft fuelling areas, oil terminals, garage forecourts, parking and cargo areas.



Item Code	Description	Size (Ltrs)
KW21126COLPOR	Colpor 200PF Joint Sealant	5.0
KW21126COLPRIM	Colpor Primer	0.5

## Thioflex 600

Thioflex 600 is used for sealing movement joints in building and civil engineering structures, including superstructures, floors, basements and subways, and is available in both gun and pouring grades.

The gun grade is ideal for general application and particularly recommended for use in high-rise buildings and other applications where access for subsequent maintenance will be difficult, and the risk of early movement failure must be minimized. It is also suitable for sealing joints in brickwork, retaining walls, basements and subways.

The pouring grade is recommended for initial sealing of expansion joints and stress relief joints in floors, and sealing other horizontal surfaces.



Item Code	Description	Size (Ltrs)
KW21120TH600G	Thioflex 600 Gun Grade	2.5
KW21126TH600P	Thioflex 600 Pouring Grade	5.0
KW21126PRIM	Thioflex Primer	0.5

For further information please refer to our Waterproofing, Concrete Protection and Repair brochure.

Please see the back cover for depot locations





## Concrete Repair & Protection Products

RFA-Tech supplies a vast range of concrete repair products, the table below gives you a selection of what we can offer.

Brand	Product	Description	Pack Details	Yield / Coverage
	Aquatek Plug / Plug XF	Provides rapid setting plugging mortars, which can be applied even under water. It stops active water leaks and seepage, even under high pressure.	10kg Pack 25kg Pack	1.45kg per dm <sup>3</sup>
	Omnitek RM Fiber	Classified as an R4 class, structural, high strength waterproof repair mortar according to EN1504-3. Suitable for structural and non-structural low and medium thickness concrete repairs. Ideally suited for preparing surfaces before the application of a waterproofing treatment.	25kg Pack	11.5ltrs
	Colflex HN – Joint Sealing Repair Strip	A ready to use NBR rubber tape repair sealing system for cracks and joints in concrete. Suitable for use in joints leaking under both negative and positive pressure and moving joints such as expansion joints.	100mm x 20m 200mm x 20m	-
	Monomix	A low density, high strength, shrinkage compensated mortar for the structural repair, rendering and profiling of vertical, horizontal and overhead surfaces.	25kg Pack	16.5ltrs
	Monolevel FC (Fairing Coat)	A single component, polymer modified, cementitious mortar with high adhesive properties, allowing it to be used as a thin screed, as well as a filler, for filling minor voids and defects to provide a fair faced finish. Supplied ready for on-site mixing and requires only the addition of clean water.	25kg Pack	15ltrs
	Monolevel RM (Render Mortar)	For the rendering and profiling of in-situ and precast concrete in vertical, horizontal and overhead surfaces. A single component, cementitious mortar which cures rapidly to produce a high performance, fair-faced render. Supplied ready for on-site mixing and requires only the addition of clean water.	25kg Pack	14.5ltrs
	Fastfill	A single component, polymer modified, fibre reinforced, Portland cement based repair compound, which is physically and chemically compatible with the host concrete. It exhibits unique hydraulic properties to produce a rapid curing mortar with enhanced polymeric properties and reliable strength development which is not significantly affected by low temperature use.	25kg Pack	13ltrs
	Monotop 610	A single component, cementitious, polymer modified primer for reinforcement protection and also a bonding bridge for Monotop concrete repair mortars.	10kg Pack 25kg Pack	5.0ltrs 12.5ltrs
	Monotop 612	A cement-based, single component, low permeability repair microconcrete, containing silica fume and polymer, meeting the requirements of Class R4 of BS EN 1504-3.	25kg Pack	11.5ltrs
	Monotop 615	A single component, cement based polymer modified high build repair and reprofiling mortar, meeting the requirements of Class R3 of BS EN 1504-3.	25kg Pack	15m <sup>2</sup> @ 1mm
	Monotop 620	A single component, cementitious, polymer modified mortar.	25kg Pack	12.5m <sup>2</sup> @ 1mm
	Sika Rapid Repair Mortar	A single component, fast setting, cementitious repair mortar, meeting the requirements of Class R4 of BS EN 1504-3.	25kg Pack	11.9m <sup>2</sup> @ 1mm
	Sikatop 122	A two component, polymer modified, cement based fibre reinforced concrete waterproof repair mortar.	10kg Pack 25kg Pack	4.7m <sup>2</sup> @ 1mm 11.9m <sup>2</sup> @ 1mm
	Sikatop 122HB	A two component, polymer modified, cement based high build concrete repair mortar.	10kg Pack 34kg Pack	7m <sup>2</sup> @ 1mm 24m <sup>2</sup> @ 1mm
	weber.cem HB40	A single component, polymer-modified, high build cementitious mortar designed for structural repairs. It requires only the addition of clean water to produce a lightweight, low permeability, high strength mortar for both soffit and vertical repair situations. The mortar is suitable for repairs to bridges and other structures as specified by the Department of Transport. Will give a final strength of 40kN/mm <sup>2</sup> .	20kg Pack	16ltrs
	weber.cem HB30	A single component, polymer-modified, high build cementitious mortar designed for concrete repairs to facades where high compressive strength is not the major consideration. It requires only the addition of clean water to produce a lightweight, low-permeability, medium strength mortar suitable for both soffit and vertical repair situations. Will give a final strength of 30kN/mm <sup>2</sup> .	20kg Pack	16ltrs

Brand	Product	Description	Pack Details	Yield / Coverage
	MasterEmaco N 5200	A universal, single component, polymer modified, fast setting, repair, reprofiling and levelling mortar. Ideal for general, non-structural patch repairs where fast setting properties with short over-coating times are needed. Exhibits excellent high build properties allowing up to 100 mm thickness in one layer.	20kg Pack	12.5ltrs
	MasterEmaco S 5300	A single component, lightweight, polymer modified, high build structural repair mortar. Specifically formulated to produce a mortar with the compressive strength and modulus characteristics defined in class R3 of EN 1504 part 3.	20kg Pack	13.5ltrs
	MasterEmaco S 5400	A single component, extra high-strength, high modulus, shrinkage compensated structural repair mortar that meets the requirements of the new European Norm EN 1504 part 3 class R4.	20kg Pack	13.5ltrs
	Nitomortar FC (Fairing Coat)	Epoxy resin fairing coat for filling blow-holes, and eliminating minor irregularities prior to the application of Nitocote and Nitoflor epoxy coatings.	1kg Pack	0.6ltrs
	Nitomortar HB (High Build)	High build epoxy reinstatement mortar for the fast and permanent reinstatement of concrete, particularly where resistance to chemicals is required. Can be used for small, localised patch repairs and because of its lightweight nature, is ideally suited for use in vertical and overhead locations and for emergency repairs where fast strength gain is important.	2.9kg Pack	2.5ltrs
	Renderoc GP (General Purpose)	High performance medium weight concrete reinstatement mortar conforming to the requirements of BS EN 1504-3 Class R3 for the reinstatement of concrete where low permeability characteristics are required but where high compressive strength is not the most important consideration. Specifically developed for vertical repair work.	25kg Pack	16ltrs
	Renderoc FC (Fairing Coat)	A single component polymer modified cementitious fairing coat conforming to the requirements of BS EN 1504-3 Class R2. Designed for application in thin layers to produce a fair-faced appearance to concrete or masonry surfaces in readiness to receive a protective or decorative coating.	25kg Pack	15ltrs
	Renderoc HB (High Build)	High performance lightweight concrete reinstatement mortar conforming to the requirements of BS EN 1504-3 Class R2 for the reinstatement of concrete where low permeability characteristics are required but where high compressive strength is not the most important consideration.	18kg Pack	15ltrs
	Patchroc GP	Fast setting emergency patching mortar for concrete pavements and floors conforming to the requirements of BS EN 1504-3 Class R4 for emergency and permanent reinstatement of localised patches in concrete pavements, airport aprons, access ramps and floors. Particularly useful when interruption of traffic must be minimised. Is alkaline in nature and will protect embedded steel reinforcement. It may be used internally and externally.	25kg Pack	12ltrs
	Paveroc	High performance reinstatement mortar for concrete pavements and floors conforming to the requirements of BS EN 1504-3 Class R4 for the reinstatement of large areas of concrete pavements and floors to avoid the total replacement of bays. Is alkaline in nature and will protect embedded steel reinforcement. It may be used internally and externally.	25kg Pack	11.5ltrs
	Galvafruid	A zinc rich, cold galvanising coating used to provide a galvanic protection on iron and steel. Can be used as a self-finish or as a durable rust inhibiting primer beneath selected top coats. Recommended for the protection of structural steelwork, agricultural and construction plant and machinery, gates, railings, iron pipework and guttering and the rust prevention of in-situ welding work.	6 x 400ml 4 x 800ml 1.9ltrs	-

For further information please refer to our **Waterproofing, Concrete Protection and Repair** brochure.

Please see the back cover for depot locations



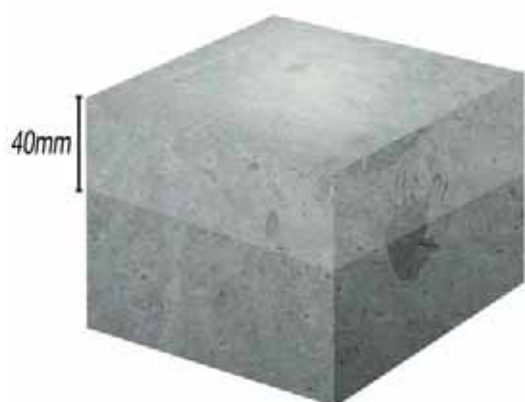
## Vetrofluid Total Concrete Protection

Vetrofluid Total Concrete Protection is a clear concrete waterproofing system, which penetrates concrete to a depth of 40mm, ensuring 100% lifetime waterproofing.

By sealing the many pores in the concrete, Vetrofluid creates a permanent barrier from water, rising damp, acids, carbonation, and freeze-thaw cycles.

Its unique formula allows new concrete to cure with an anti-evaporation effect, whilst also reducing the risk of cracking caused by plastic and hygroscopic shrinking.

VOC and solvent free, Vetrofluid is completely eco-friendly.



### Key characteristics

- ⊕ Permanent waterproofing
- ⊕ Penetrates concrete up to 40mm
- ⊕ Protects from freeze-thaw cycles
- ⊕ Can triple the life span of concrete
- ⊕ Spray applied
- ⊕ 100% eco-friendly
- ⊕ Odourless and colourless
- ⊕ Resistant to chemical attacks

### Suitable for

- ⊕ Underground walls
- ⊕ Bridges and underpasses
- ⊕ Storage and water tanks
- ⊕ Immersed concrete structures
- ⊕ Basements
- ⊕ Wells
- ⊕ Tunnels
- ⊕ And many more

Item Code	Size (Ltrs)
KW21125VETRO05	5
KW21125VETRO20	20

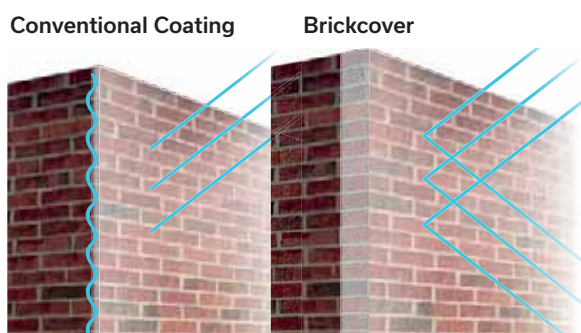
## Brickcover Total Protection for Bricks and Stone

Brickcover Total Protection is a waterproofing agent which forms a waterproof barrier to protect bricks against rain water, rising damp, mildew, bacteria, saltpetre, efflorescence and freeze-thaw cycles.

Brickcover's unique formula allows it to penetrate up to 35mm into the brick (unlike conventional surface coatings) leaving a completely invisible and long lasting finish.

Spray, brush or roller applied, Brickcover is a single coat application which cures within 2 hours, forming a long-lasting waterproof barrier.

Brickcover is VOC and solvent free, colourless and without odour.



### Key characteristics

- ⊕ Waterproof barrier
- ⊕ Deep penetration
- ⊕ Invisible and breathable
- ⊕ Spray or brush applied
- ⊕ Environmentally friendly
- ⊕ Brick protection against moisture, mildew, bacteria, salt and frost

Item Code	Size (Ltrs)
KW21125BRICK01	1
KW21125BRICK05	5

White colouration for illustrative purposes only - Brickcover coating is clear

## Gas Barrier Membranes



RFA-Tech offers a comprehensive range of high quality gas protection membranes and associated components to protect buildings and their occupants from the build-up of harmful gases.

Product	Description	Application	Length (mtr)	Width (mm)	Pack Size
GDB10 Plus Gas & Damp Barrier Membrane	A universal barrier membrane for protection of new buildings against gas and damp penetration from the ground. Used as an oversite membrane below floor slabs or suspended floors, in conjunction with Z-Led Cavity and Slab Edge Protection System, it provides a complete solution when installed in accordance with BRE Report BR 414.	<ul style="list-style-type: none"> <li>● Radon</li> <li>● CO<sub>2</sub></li> <li>● Methane</li> </ul>	40	2500	Each
EPS 2000 Gas Membrane	A high quality, blown extruded blend of virgin polymer MDPE/LDPE (co-polymer). The system will protect the building and its occupants from Radon, CO <sub>2</sub> and low levels of methane.	<ul style="list-style-type: none"> <li>● Radon</li> <li>● CO<sub>2</sub></li> </ul>	12.5	4000	Each
EPS Radon CO2 Membrane	A blown extruded blend of virgin polymer MDPE and LDPE (co-polymer).	<ul style="list-style-type: none"> <li>● Radon</li> <li>● CO<sub>2</sub></li> </ul>	20	4000	Each
EPS Universal Gas Barrier	A high quality, blown extruded blend of virgin polymer MDPE/LDPE (co-polymer). The loose laid system will protect the building and its occupants from Radon, CO <sub>2</sub> and low levels of methane.	<ul style="list-style-type: none"> <li>● Radon</li> <li>● CO<sub>2</sub></li> <li>● Methane (low levels)</li> </ul>	20	4000	Each
EPS TGB Total Gas Barrier	A high performance laminated flexible loose laid sheet barrier, specifically designed to overcome the health and safety risks associated with building on land contaminated by methane gas, CO <sub>2</sub> or radon gas.	<ul style="list-style-type: none"> <li>● Radon</li> <li>● CO<sub>2</sub></li> <li>● Methane</li> </ul>	50	2000	Each
EPS Hydrocarbon Membrane barrier	A high quality, high density polyethylene (HDPE) produced from specially formulated, proprietary virgin polyethylene resin, designed specifically for flexible geomembrane applications.	<ul style="list-style-type: none"> <li>● Radon</li> <li>● CO<sub>2</sub></li> <li>● Methane</li> <li>● Hydrocarbon</li> </ul>	30	2500	Each
EPS GR DPC	A high quality, very flexible polyethylene (LLDPE/VFPE) geomembrane produced from specially formulated, virgin polyethylene resin, designed specifically for flexible geomembrane applications.	<ul style="list-style-type: none"> <li>● Radon</li> <li>● CO<sub>2</sub></li> <li>● Methane</li> <li>● Hydrocarbon</li> </ul>	20	600	Each
EPS Liquid Vapour Membrane	A high performance elastomeric liquid rubber membrane specifically designed for waterproofing a range of vertical and horizontal surfaces.	<ul style="list-style-type: none"> <li>● Radon</li> <li>● CO<sub>2</sub></li> <li>● Methane</li> </ul>	-	-	20ltrs
EPS GRM	A high performance self-adhesive waterproofing and gas resistant membrane constructed from a polymer modified bitumen compound, and incorporating an aluminium carrier film.	<ul style="list-style-type: none"> <li>● Radon</li> <li>● CO<sub>2</sub></li> <li>● Methane</li> </ul>	20	1000	Each
EPS Radon Barrier	A co-extruded, co-polymer hybrid.	<ul style="list-style-type: none"> <li>● Radon</li> </ul>	20	4000	Each

Please see the back cover for depot locations



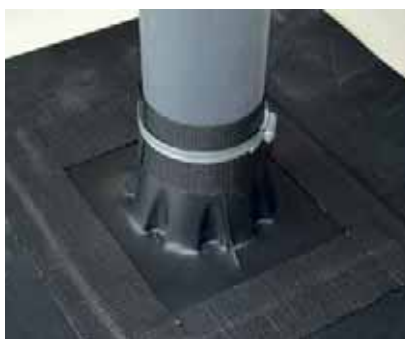
## Gas Barrier Tapes

RFA-Tech offers a range of Gas Barrier Tapes to be used in conjunction with the appropriate gas barrier membranes.



Product	Width (mm)	Roll Length (mtr)	Pack Size
GDB10 self-adhesive overlap tape	150	20.0	Each
Butyl Tape	30	22.5	Each
Butyl Tape	50	22.5	Each
Double Sided EPS Radon Gas Tape	30	30.0	Each
EPS CO2/Methane Gas Tape	50	30.0	Each
EPS Hydrocarbon Gas Tape	100	15.0	Each
EPS Bitutape	100	15.0	Each
EPS Lap Tape	100	33.0	Each
Foil Faced Jointing Tape	50	50.0	Each

## Pre-Formed Corners, Cloaks & Top Hats



It is crucial that when gas protection is required, the site conditions, design and application are all taken into consideration to provide an impermeable membrane capable of surviving installation and subsequent traffic to protect against harmful gases. It is advisable to consider the use of pre-formed corner and cavity tray units when designing and installing gas protection membranes, especially where barriers of greater thickness are required.

Pre-formed units are manufactured from a 2mm blend of virgin HDPE/PP (high density polyethylene/polypropylene), they match or exceed the gas protection offered by the required membrane. When used in conjunction with the appropriate gas membrane and gas jointing tape, these pre-formed units isolate the internal floor membrane from the external structure of the property, and negate any thermal instability of the membrane that would otherwise affect the structural integrity of the property.

### Key benefits

- Time saving installation.
- Full system integrity and compliance.
- Full mortar bed maintained (no multiple layers).
- Clear partition Robust Detail wall cavity maintained.
- No thermal instability issues.
- Variable depths for bespoke floor construction.
- Clear break between ground worker and brickworks package.
- Penetrations fully sealed against gas and water.

Product	Description	Options Available
Top Hat	Pre-formed unit ensures gas and watertight construction cones, complete with steel clip in accordance with NHBC guidelines.	Diameters of 50mm, 110mm, 130mm and 160mm
External Corner Tray	Pre-formed unit ensures gas and watertight construction in accordance with NHBC guidelines.	Internal: 75mm & 150mm External: 75mm & 150mm
Partitioned Wall Stop End Cavity Tray	To suit below floor clear cavity construction in Robust Detail situations.	-
Partitioned Wall Cavity Tray	To suit below floor clear cavity construction in Robust Detail situations.	-
Door Reveal Cloak Unit	Pre-formed unit ensures gas and watertight construction in accordance with NHBC guidelines.	Left-hand and right-hand

A range of Formwork Treatments for use on timber, steel and other types of formwork to provide a high quality concrete finish.

## Formstrike MRO Concrete Release Agent

Formstrike MRO is a versatile neat oil with surfactant which is designed to give optimum release and surface finish for a wide range of formwork materials. Complies with the British Cement Association, Category 2.

Item Code	Size (Ltrs)
KJ09101FORMS020	20
KJ09101FORMS210	210

## Formstrike WB Mould Oil

Formstrike W.B. is a blend of bio-degradable oils emulsified in water and is designed for use in general site operations and precast yards. The oil forms a physical barrier between the form and the concrete, with the surfactant working in conjunction with the alkalinity of the concrete to produce a high standard of finish.

Item Code	Size (Ltrs)
KJ09101FSWB025	20
KJ09101FSWB210	210

## Chemlease Chemical Release Agent

Chemlease is an internationally accepted formulation giving an optimum of release and concrete finish for all types of formwork. This is achieved by the chemical formation of complex soaps at the concrete interface, which is a very different concept to conventional mould oils.

Item Code	Size (Ltrs)
KJ09101CHLEA005	5
KJ09101CHLE0025	20
KJ09101CHLE0210	210

## Biolease Standard Mould Release Agent

Biolease Standard is a blend of bio-degradable vegetable oils emulsified in water and is designed for use in general site operations and precast yards. The oil forms a physical barrier between the form and the concrete, with the surfactant working in conjunction with the alkalinity of the concrete to produce a high standard of finish.

Item Code	Size (Ltrs)
KJ09101BIOLS025	25
KJ09101BIOLS210	210

## Nulease Varnish Formwork Coatings

Nulease is a specifically formulated system designed to give the maximum protection to all types of timber formwork and moulds made of concrete to ensure production of high quality concrete finishes. Nulease Standard is recommended for sealing and protecting general formwork where the criteria is for multiple re-use. Nulease Matt should be used for the production of high quality concrete finishes due to its greater grain filling properties and matt finish which reduces crazing and hydration staining.

Item Code	Type	Size (Ltrs)
KJ09431NULEA001	Standard	1
KJ09431NULEA005	Standard	5
KJ09431NULEA025	Standard	20
KJ09431NULMA05	Matt	5

## Nulease WB Waterbased Formwork Coating

Nulease WB is a water based acrylic urethane clear sealer designed for applications onto wood and concrete formwork. This environmentally friendly product is characterised by its rapid drying, hard wearing, non-yellowing properties which gives maximum protection to timber formwork and moulds and helps ensure reproduction of high quality concrete finishes.

Item Code	Size (Ltrs)
KJ09431NULWB05	5
KJ09101NULWB25	25

## Formfill Formwork Repair Paste

Formfill is a pre-mixed polyester resin paste to which a small amount of reactive hardener paste is added to produce a fast-setting compound, highly resistant to impact, abrasion, oil, water, and concrete alkalis. Specially formulated for the rectification of surface damage and irregularities on all types of timber and metal formwork, and for the filling of small imperfections and cracks in concrete surfaces.

Item Code	Type	Pack Size
KJ09101FFREP15	Paste	1.5kg
KJ09101FFREP07	Paste	7kg
KJ09101FFHAR50	Hardener	50g

## Multi-Purpose Hole Filler

Multi-Purpose Hole Filler is a single component, polymer modified, fibre reinforced, Portland cement based repair compound, which exhibits unique hydraulic properties to produce a rapid curing mortar with enhanced polymer properties. It is supplied as a single component system requiring only the addition of clean water to give a rapid setting, yet durable high strength mortar. It is ideally suited for the filling of voids, particularly in new construction, which need to be rapidly put into service – such as tie-holes, grout holes and voids around fixings.

Item Code	Pack Size (kg)
KJ09101TSEL08	8

## Formwork Foam

Formwork Foam is an adhesive foam strip designed to seal inaccessible joints to prevent grout loss.

Item Code	Width (mm)	Pack Size (mtr)
KJ09431NUFOAM12	25	12

Please see the back cover for depot locations



A range of Curing Agents applied to either fresh or newly stuck concrete to control the rate of water ingress.

## Chemcure S Concrete Curing Liquid

Chemcure S is an aqueous solution of metallic silicates which when applied to fresh concrete forms a micro-crystalline seal in the pores, reducing the evaporation of moisture from the mix thus assisting in the efficient curing of the concrete. The aqueous element of Chemcure S will evaporate into the atmosphere and the silicates become an integral part of the concrete, leaving no residues or deleterious material on the concrete surface. Removal is not required; the porosity of the concrete is slightly reduced but the bond with subsequent coatings/treatments, whether on cast or trowelled surfaces, will be unaffected.

Item Code	Size (Ltrs)
KJ09211CCS020	20
KJ09211CCS210	210

## Chemcure R75 & R90 Concrete Curing Membranes

Chemcure R75 and R90 are formulated with inert hydrocarbon resins which give films with excellent water retention efficiency in excess of 75% and 90% respectively, complying with ASTM C309.66 and HA Spec. Clause 1027. Available in clear, white and with aluminium flake pigment, to give maximum solar reflection.

Item Code	Size (Ltrs)	Water Retention Efficiency
KJ09101CCR75025	20	75%
KJ09211CCR75210	210	75%
KJ09211CCR90025	20	90%
KJ09211CCR90210	210	90%

## Chemcure R90 W.B. Concrete Curing Membrane

Chemcure R90 WB is a unique, environmentally friendly, water based concrete curing membrane of aqueous resin emulsion containing fine particles of hydrocarbon resin. Held in suspension by carefully selected emulsifiers, when applied to freshly placed concrete act as a curing agent with a water retention efficiency in excess of 90%.

Item Code	Size (Ltrs)
KJ09211CCWB9025	25
KJ09211CCWB9210	210

## Curecote Super Acrylic Curing Membrane

Curecote Super is a clear styrene acrylic curing and sealing compound designed for application to freshly cast concrete to provide a highly efficient curing membrane. The applied coating remains on the concrete surface to provide a dust free abrasion resistant surface which readily accepts the application of many subsequent finishes. Curecote Super may also be used as a clear sealer on aged concrete to dustproof and provide a surface which is more easily cleaned.

Item Code	Size (Ltrs)
KJ09211CCSUP020	20
KJ09211CCSUP210	210

## Aquatard Concrete Topface Surface Retarder

Aquatard Concrete Topface is an aqueous spray applied top face retarder developed for application onto freshly placed horizontal concrete to produce an exposed aggregate surface, excellent for receiving subsequent concrete or toppings.

Item Code	Size (Ltrs)
KJ09101ATTF005	5
KJ09431ATTF025	25
KJ09431ATTF210	210

## Aquatard Formwork Retarder

Aquatard Formwork Retarder is an environmentally friendly, non-flammable pigmented retarder designed to produce an exposed aggregate surface which gives an excellent key for subsequent concreting or surface treatments. It is ideal for construction joints and rendering applications.

Item Code	Size (Ltrs)
KJ09431ATFW005	5
KJ09431ATFW025	25
KJ09101ATFW210	210

## Chemclean Acidic Cleaner

Chemclean is a specially selected blend of inhibited inorganic acids, ideal for the removal of all cement based contamination and rust from a wide range of surfaces.

Item Code	Size (Ltrs)
KJ09101BRIKACID	5
KJ09541CHCLE25	25

## Nuwash Degreasing Agent & Tool Cleaner

Nuwash is an extremely powerful solvent based anti-bacterial cleaner for the removal of grease, oil, wax, bitumen and some types of paint from concrete and a wide range of other surfaces.

Item Code	Size (Ltrs)
KJ09651NUWASH05	5
KJ09651NUWASH25	25

## Polysolv Polystyrene Dissolver

Polysolv Polystyrene Dissolver is a powerful solvent blend for the dissolving of expanded polystyrene.

Item Code	Size (Ltrs)
KJ09431POLYSV05	5
KJ09431POLYSOLV	25

## Plastic Sprayer



A wide range of spare parts and accessories are available with this sprayer if required.

### Key features

- ⦿ 5 litre working capacity.
- ⦿ 7 litre full capacity.
- ⦿ Liquid level indication via transparent hose.
- ⦿ Ergonomic handle, filter with viton seals and rust proof spring.
- ⦿ Adjustable conical nozzle and adaptor for accessories.

Item Code	Pack Size
KJ09651SPPLATAN	Each

## Metal Sprayer



The Metal Sprayer is a 5 Litre working capacity steel pressure sprayer, complete with a brass lance, adjustable nozzle and pressure gauge.

### Key features

- ⦿ 5 litre working capacity.
- ⦿ 8 litre full capacity.
- ⦿ Brass lance and adjustable nozzle.
- ⦿ Safety release valve.
- ⦿ Pressure gauge.

Item Code	Pack Size
KJ09651SPMETAL	Each

## Sprayer Accessories

A range of sprayer accessories are available, and these are listed below.



Item Code	Description	Pack Size
KJ09651SPLAN18	Spare 18" Lance	Each
KJ09651SPLAN24	Spare 24" Lance	Each
KJ09651SPHOSE	Spare Sprayer Hose	Each
KJ09651SPNOZZLE	Spare Nozzle	Each
KJ09651SPTRIGG	Trigger & Hose Tail	Each
KJ09651SPPART	Tango Parts	Each
KJ09651DRUMTAP	Plastic Drum Tap	Each

Please see the back cover for depot locations





## 335 Construction Silicone



335 Construction Silicone is a low modulus reactive cure silicone sealant specially formulated as a cost-effective PVCu sealant, which also adheres to many common building substrates. It is fully tested to ISO 8339 and ISO 10590/10563.

Item Code	Pack Size (ml)
KJ09541SILICONE	295

## Fix & Fill Expanding Foam



Fix and Fill Expanding Foam is a quick setting one-part polyurethane foam in aerosol form, and is supplied with attachable nozzles. The foam expands on application to up to 50 times its original volume and expands on application by 150%. Once cured, the foam can be cut, sawn or plastered over after only one hour, providing the working temperatures (can and surfaces) are between +5 to +25°C, ideally 20°C. It is recommended for use with the expanding foam gun.

Item Code	Pack Size (ml)
KJ09431EXPFOAM	750

## Power Pro Gun



The Power Pro Gun is the ultimate heavy duty sealant gun, with extra pull trigger, hook end and swivel action barrel for both 310ml and 400ml cartridges.

Item Code	Pack Size
KJ09651PROGUN	Each

## Expanding Foam Gun



The Expanding Foam Gun is a heavy-duty PU foam gun. It allows gun grade expanding foam to be applied cleanly and precisely.

Item Code	Pack Size
KJ09651FOAMGUN	Each

High performance, non-shrink cementitious and resinous grouts for structural repair, bedding and anchoring. Used where light tensile loading is required for industrial applications and highways structures.

## General Purpose Non-Shrink Grout

A General Purpose Non-Shrink, high strength, cementitious grout comprising low alkali high specific surface area Portland cements and other cementitious binders. These are combined with high purity aggregates and a system of compatible admixtures to achieve high in-service performance.

Item Code	Size (Kg)
KJ09431MAPGP461	25

## Nugrout Flowable Free Flowing Micro Concrete

Nugrout Flowable is a cementitious free flowing and self-compacting concrete, based on non-reactive aggregates, low alkali Portland cements with selected admixtures to produce chloride free concrete which contains no corrosive metallic additives. It is designed for structural repair situations and complies with the requirements of the Dept of Transport Standard BD27/86 Clause 4, as well as with the requirements of BS EN1504 Part 3 Class R4.

Item Code	Size (Kg)
KJ09431NGFC25	25

## Nugrout Hi-Spec Free Flowing Grout

Nugrout Hi-Spec is a high strength free flowing cementitious grout based on non-reactive aggregates, shrinkage compensated Portland cements and selected admixtures which produce a chloride free grout, containing no corrosive metallic additives. It contains a maximum nominal size aggregate of 2mm and is suitable for grouting thicknesses over 5mm and has been formulated to comply with the requirements of EN1504 Part 3 Class R4. It also conforms with the requirements of the Dept of Transport Specification for Highway Works Clause 2601 Part 4.

Item Code	Size (Kg)
KJ09431NGHS25	25

## Nugrout Superflow Free Flowing Grout

Nugrout Superflow is a high strength free flowing cementitious grout based on non-reactive aggregates, shrinkage compensated Portland cements and selected admixtures which produce a chloride free grout, containing no corrosive metallic additives. It contains a maximum nominal size aggregate of 2mm and is suitable for many different grouting, bedding and void filling applications. It has been formulated to comply with the requirements of EN1504 Part 3 Class R4.

Item Code	Size (Kg)
KJ09431NGSF25	25

## Epicon Epoxy Grouts

There are five epoxy grouts in our range which are specified below. These cover the majority of grouting and fixing applications encountered within civil engineering and the construction industry in general, where the mechanical properties must be of the highest order.

Item Code	Type	Description	Size (Kg)
KJ09541EPGRTH45	<b>Epicon H</b>	Thixotropic grout for horizontal or inverted fixings.	4.5
KJ09541EPGRTR32	<b>Epicon RT</b>	Pourable for free flow gap grouting for gaps over 25mm.	32
KJ09541EPGRTL20	<b>Epicon L</b>	Pourable for free flow gap grouting for gaps 20-100mm.	20
KJ09541EPGRTM20	<b>Epicon M</b>	Lightly filled pourable for free flow gap grouting for gaps 5-40mm.	20
KJ09541EPGRTS05	<b>Epicon S</b>	Unfilled grout for gap and crack widths 0.25-6mm.	5

## Confil Grout Polyester Resin Anchor

Confil Grouts are based on polyester resins designed for quick and easy mixing. Available in two grades, these quick curing grouts are designed for anchoring fixings into concrete, masonry, brickwork, etc. Each grade is available in two versions, a standard set and rapid set.

Item Code	Type	Description	Grade	Size (Ltrs)
KJ09431CFGTHP10	<b>Confil HP</b>	<b>Confil HP Grout</b> - Thixotropic grout for use with a mastic gun in vertical and inverted applications.	Standard	10
KJ09431CFGTHP02	<b>Confil HP</b>		Rapid	2
KJ09431CFGTS10	<b>Confil</b>	<b>Confil Grout</b> - Pourable grout for horizontal applications.	Standard	10
KJ09431CFGTW02	<b>Confil</b>		Rapid	2

Please see the back cover for depot locations



Pre-packed polymer modified cementitious concrete repair compounds for the reinstatement of defective concrete.

## Nupatch Cosmetic Repair Compounds

A range of simple to use polymer modified cement based compounds which develop high strength at an early age for the repair of both insitu and precast concrete. The Nupatch Cosmetic range have all been designed to comply with the requirements of EN1504 Part 3 Class R2.

### Applications

- ⊗ Repair of precast concrete units.
- ⊗ Repair of damaged insitu concrete.
- ⊗ Repair of concrete pipes.
- ⊗ Repair to concrete floors, roads, kerbs & steps.

Item Code	Grade	Size (Kg)
KJ09431NUPGR75	Grey	7.5
KJ09431NUPGR25	Grey	25
KJ09431NUPWH75	White	7.5
KJ09431NUPWH25	White	25
KJ09431NUPSP75	Special	7.5
KJ09431NUPSP25	Special	25

## Epicon High Strength Epoxy Mortar

Epicon Mortar has been designed to comply with the requirements of EN1504 Part 3 Class R3. It is an extremely versatile epoxy mortar suitable for a number of building and repair needs where characteristics of excellent adhesive bond, high strength, abrasion and chemical resistance are required. Epicon Mortar is a pre-weighed three component system of solvent free epoxy resin and hardener which, when blended with the graded aggregates, forms a high strength mortar.

Item Code	Size (Kg)
KJ09431EPMT25	25

### Applications

- ⊗ Repair of worn and damaged concrete floors and stairs.
- ⊗ Repair of spalled expansion joints.
- ⊗ Repair of concrete and asphalt roads and runways.

## Epicon Fast Setting High Strength Epoxy Mortar

Epicon F.S. Mortar has been designed to comply with the requirements of EN1504 Part 3 Class R4. It is a fast curing, heavy duty epoxy mortar which has been formulated to enable the rapid repair of concrete surfaces.

It is a pre-weighed three component system of solvent free epoxy resin and hardener which, when blended with the aggregate provided, forms a high strength mortar with outstanding adhesive properties.

Item Code	Size (Kg)
KJ09431EPFSMT25	25

### Applications

- ⊗ Repair of worn and damaged concrete floors.
- ⊗ Restoration of worn stairs and steps.
- ⊗ Repair of spalled expansion joints.
- ⊗ Repair of concrete roads and runways.

## Nucem Epoxy Tack Coat Primer

A two component primer/tack coat designed to bond new cement based products to existing concrete surfaces. Initially developed for use with the Nucem range of cementitious repair compounds, the primer is characterised by its excellent adhesion to both concrete and steel reinforcement. The formulation is based on a water dispersible epoxy resin containing cement which provides an alkaline environment to protect steel reinforcement from chloride and carbon dioxide attack.

Item Code	Size (Kg)
KJ09431NUCPR0.5	0.5
KJ09431NUCPR01	1
KJ09431NUCEM5KG	5

## Nucem Concrete

Nucem Concrete is formulated to comply with the requirements of EN1504 Part 3 Class R4 as well as conforming to the DTp Model Specification for the 'Repair of Concrete Highway Structures' BD 27/86 Clause 6. It is based on Portland cements complying with Clause 1702, DTp Specification for Highway Works and non-reactive aggregates. It is specially designed for the restoration of spalled and damaged concrete caused by reinforcement corrosion or frost attack.

Item Code	Size (Kg)
KJ09431NUCECO27	27.5

### Applications

- ⊗ Repair of damaged concrete both insitu and precast.
- ⊗ Repair of damaged floors, bridge decks and road wearing surfaces.
- ⊗ Screeding where abrasion and/or water resistance is required.
- ⊗ Repairs to spalled columns and beams using formwork.

## Nucem Mortar

Nucem Mortar is formulated to comply with the requirements of EN1504 Part 3 Class R4 as well as conform to the DTp Model Specification for the 'Repair of Concrete Highway Structures' BD 27/86 Clause 6. It is based on Portland cements complying with Clause 1702, DTp Specification for Highway Works and non-reactive aggregates. It is specially designed for the restoration of spalled and damaged concrete caused by reinforcement corrosion or frost attack.

Item Code	Size (Kg)
KJ09431NUCMO27	27.5

### Applications

- Repair of damaged insitu and precast concrete.
- Repair of damaged floors, bridge decks and road wearing surfaces.
- Screeding where abrasion and/or water resistance is required.
- Repairs to spalled columns and beams using formwork.

## Nucem H.B. Mortar

Nucem H.B. Mortar is a durable system which affords maximum protection to embedded reinforcement. It can be applied to a thickness of up to 50mm in a single application on a vertical surface. Independently tested, it complies with the DTp Specification BD27/86 clause 6. It has been specially formulated to achieve and surpass the performance requirements of EN1504 Part 3 Class R3.

Item Code	Size (Kg)
KJ09431NUCHB20	20

### Applications

- Repair of concrete damaged by reinforcement corrosion or fire damage.
- Repairs to spalled columns, beams and soffits.
- Waterproof pointing mortar.
- Waterproof render to concrete, brickwork and blockwork.

## Nucem Skimcoat

Nucem Skimcoat is ideal for the treatment of repaired concrete surfaces to protect the unrepaired areas against further attack by chlorides or carbonation and to provide an overall uniform appearance or a consistent surface to receive a decorative coating. It is a waterproof material which allows the structure to breathe. Independently tested, it is designed to conform with the requirements of EN 1504 Part 2.

Item Code	Size (Kg)
KJ09431NUCSKIM	12.5

### Applications

- Waterproofing of internal and external concrete, brickwork and blockwork.
- Protection of concrete with insufficient cover to steel reinforcement.
- Unification of repaired concrete structures.
- Damp-proofing of basements and cellars.

## Nufix SBR Bonding & Waterproofing Additive

Nufix SBR is a styrene butadiene rubber latex designed to upgrade the bonding and waterproofing properties of cementitious renders, screeds, mortars and concretes. By increasing durability and tensile and flexural strengths, high strength screeds may be laid as thin as 10mm. In addition, screeds and renders can be waterproofed, greatly improving their resistance to abrasion, frost, water vapour transmission and chemical attack.

Item Code	Size (Ltrs)
KJ09431NUFIX05	5
KJ09431NUFIX25	25

### Applications

- Water resistant renders and screeds.
- Bonding new concrete to old.
- Chemical and abrasion resistant screeds ideal for agricultural uses.
- Repair and patching of concrete floors.
- Industrial floors and screeds.
- Concrete repair mortar when gauged with sand and cement.
- Production of water resistant adhesives for tiles, kerbs, copings, etc.
- Lining for effluent tanks and ducts, etc.

Please see the back cover for depot locations



## RES-TECH PSF410 Polyester Chemical Anchor Resin

RES-TECH PSF410 is a two-part chemical anchoring resin designed to anchor threaded rods and rebar in concrete. It also has the advantage of European Approval for use in masonry blocks according to the ETAG 029. This sophisticated chemical anchoring product is a fast curing injection system, delivered through a mixing nozzle directly into the fixing hole. The cartridges are extruded using either a specially designed fixing tool, or a silicone tool.



Item Code	Pack Size (ml)
KJ09541ARPSF410	410

### Advantages

- ⊗ Good bond strength with high load resistance.
- ⊗ Used with all grades of threaded rod.
- ⊗ Used in concrete and masonry.
- ⊗ Fast gelling and curing.
- ⊗ Used in dry and wet conditions.
- ⊗ European approval for use in masonry with nylon sleeves.
- ⊗ Close edge distance and small spacing.
- ⊗ Also suitable as a filler for gap and crack filling.
- ⊗ Economical fixing resin.
- ⊗ Extremely versatile.
- ⊗ Styrene free with low odour.
- ⊗ Manual cleaning up to 20mm diameter and embedment depths of 240mm.

## RES-TECH VNSF410 Vinylester Chemical Anchor Resin

RES VNSF410 is a two-part chemical anchoring resin designed to anchor threaded rods and rebar in concrete. It also has the advantage of European Approval for use in cracked and non-cracked concrete, as well as coverage for rebar under TR029 and TR023 (post installed rebar). This sophisticated chemical anchoring product is a fast curing injection system, delivered through a mixing nozzle directly into the fixing hole. The cartridges are extruded using either a specially designed fixing tool, or a silicone tool.



Item Code	Pack Size (ml)
KJ09541ARVSF410	410

### Advantages

- ⊗ High bond strength with high load resistance.
- ⊗ Used with all grades of threaded rod and rebar in accordance with TR029.
- ⊗ Used in non-cracked and cracked concrete.
- ⊗ Fast gelling and curing.
- ⊗ Used in dry and wet concrete.
- ⊗ Used in critical or overhead applications.
- ⊗ Used in corrosive environments.
- ⊗ ETA tested based on life of anchor 50 years.
- ⊗ Used for elevated temperatures - temperature ranges I, II and III.
- ⊗ Used for post installed rebar installations under TR029 and TR023.
- ⊗ Low shrinkage enables large diameter installations.
- ⊗ Close edge distance and small spacing.
- ⊗ Manual cleaning up to 20mm diameter and embedment depths of 240mm.

## RES-TECH PE500 Pure Epoxy Chemical Anchor Resin

RES-TECH PE500 is a two-part chemical anchoring resin designed to anchor threaded rods and rebar in concrete. It also has the advantage of two European Technical Approvals for post-installed rebar and cracked and non-cracked concrete, plus BS6920 testing for use in potable water, and fire approval. This sophisticated chemical anchoring product is a fast curing injection system, delivered through a mixing nozzle directly into the fixing hole. The cartridges are extruded using either a specially designed fixing tool, or a silicone tool.



Item Code	Pack Size (ml)
KJ09541ARPE5585	585

### Advantages

- ⊗ High bond strength with high load resistance.
- ⊗ Used with all grades of threaded rod and rebar in accordance with TR029.
- ⊗ Ideal for deep embedment installations.
- ⊗ Used in non-cracked and cracked concrete.
- ⊗ Used in dry and wet concrete.
- ⊗ Used in flooded holes.
- ⊗ Used for overhead applications.
- ⊗ Ideal for diamond drilled holes.
- ⊗ Ideal for elevated temperatures - temperature ranges I, II and III.
- ⊗ Ideal for rebar installations under TR023 and EN1992-1-1:2004 EC2.
- ⊗ Zero shrinkage enables large diameter installations.
- ⊗ Close edge distance and small spacing.
- ⊗ Manual cleaning up to 20mm diameter and embedment depths of 240mm.

## Febfix 205 Chemical Anchor Resin

Febfix 205 is a styrene free rapid curing chemical anchoring system designed for high strength fixing of railings, satellite dishes, signs, brackets and other fixtures which carry heavy loads. The unique easy-flow technology means the twin bag system within the cartridge enables the product to be applied using a standard cartridge gun.



### Typical Uses

- ⦿ Fixing wall ties.
- ⦿ Bolts and screws into a wide range of building substrates.
- ⦿ Securing machinery into floors.
- ⦿ Fixing studs and starter bars.

Item Code	Pack Size (ml)
KJ09541FBFIX205	300

## Anchor Resin Applicator Guns

Anchor Resin Applicator Guns are used in conjunction with the sophisticated chemical anchoring products delivered through a mixing nozzle directly into the fixing hole. The following anchor resin applicator guns are supplied to complete the system: -

Anchor Resin Applicator Gun 410ml - for use with both RES-TECH PSF410 and RES-TECH VNSF410.

Anchor Resin Applicator Gun 585ml - for use with RES-TECH PE500.



Item Code	Type	Pack Size
KJ09541RESAP410	Suitable for 410ml	Each
KJ09541RESAP585	Suitable for 585ml	Each

## Blower and Mixers

To ensure maximum performance of the RFA-Tech range of Chemical Anchor Resins, it is recommended to use a Blower and Nozzle to ensure a properly cleaned fixing hole free of all debris. Spare T-Flow Mixers are also available if required.



Item Code	Description	Pack Size
KL11221ARBLW280	Blower 280mm	Each
KL11221ARNOZZLE	Spare T-Flow Mixers	Each

Please see the back cover for depot locations



## Conseal Silicate Concrete Dustproof

Conseal Silicate is a concrete hardener and dustproofer consisting of a concentrated solution of metallic silicates that only requires clean water. It is a simple and economical treatment for a variety of concrete floors.

Item Code	Size (Ltrs)
KJ09212CONSI015	15
KJ09212CONSI200	200

### Advantages

- Dustproofs and reduces permeability to liquids.
- Improves resistance to abrasion and wear.
- Economical and easily applied by unskilled labour.
- Easily retreated after a number of years.

## Conseal Acrylic Concrete Dustproof

Conseal Acrylic is a clear acrylic sealer designed for application on to concrete to provide a long lasting dust free sealed surface. This low odour water borne formulation makes it the ideal product for use where solvent based products would be undesirable. It is suitable for use as a sealer on green and imprinted concrete where its excellent non-yellowing and weathering properties are fully utilised.

Item Code	Size (Ltrs)
KJ09101CONACR05	5
KJ09101CONACR25	25

### Advantages

- Non-flammable, low odour formulation.
- Economical in use and equipment may be cleaned with water.
- Easily applied by low pressure spray, brush or roller.
- Fine particle size ensures excellent penetration.

## Epigard

Epigard is a two component extended epoxy high build coating characterised by its inbuilt flexibility, excellent adhesion and resistance to water and a wide range of chemicals. It will successfully protect concrete structures including abutments, wing walls and bearing shelves, drainage channels, silos and tanks.

Item Code	Size (Kg)
KJ09431EPIGUARD	5

### Advantages

- No primer required.
- Excellent bond strength.
- Good chemical and abrasion resistance.
- Inbuilt flexibility.

## Nucryl

Nucryl has excellent weather resistance properties, providing a long lasting barrier effect against carbon dioxide and other aggressive agents (e.g. sulphur dioxide) and appreciably reducing the carbonation of old and new concrete surfaces.

Item Code	Size (Ltrs)
KJ09431NUCLE05	5

### Applications

- Protection of external concrete structures.
- Decorative treatment for exposed aggregate panels.
- Sealer for precast units including paving slabs.
- Protection of internal concrete surfaces against dirt pick-up.
- Alkali resistant.
- Adheres to difficult surfaces.

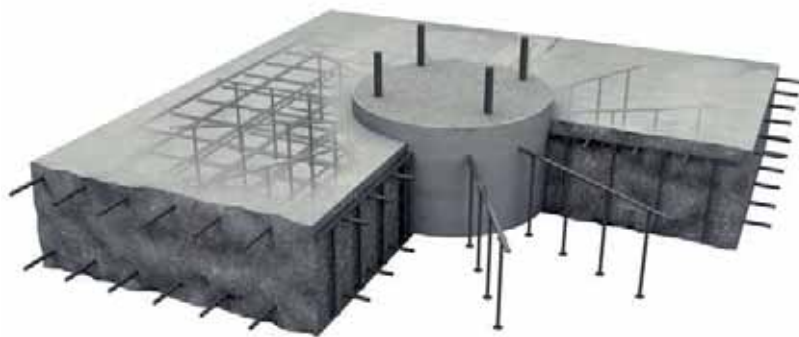
## Sheartech Rail® - Punching Shear Reinforcement

The use of flat slab construction has become increasingly popular in the construction of concrete frame buildings. A flat slab design increases the speed of the construction process by simplifying the formwork system used.

Floor heights can also be reduced offering greater space within the building and leading to more floors for a given building height. Material savings are also seen, as less concrete and associated materials are used.

Flat slab design brings many benefits, however, localised high shear stresses around column heads can be seen in these designs and if additional measures are not taken the weight of the slab can result in the column punching through the slab. In the past punching shear has been relieved by adding further concrete to the building, such as the use of downstand beams or localised thickening around column heads; however these measures require complex formwork and significantly reduce the benefits of the flat slab.

Adding further reinforcement in the form of loose shear links around column heads has been used as a measure to resist punching shear but these links are time consuming and labour-intensive to install and design.

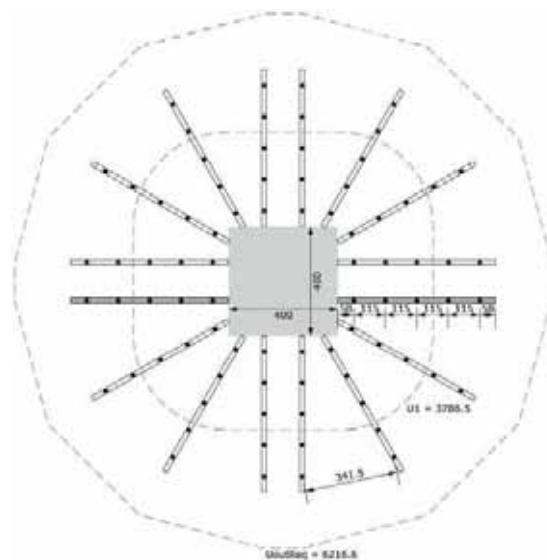


The Sheartech Rail system offers a **CARES Approved** method of providing punching shear reinforcement. The system is fast to install with all component parts prefabricated to allow simple and accurate placement. It has been independently tested, approved and certified by CARES to be fully compliant with the EC2 design code whilst being fully compatible with the outgoing BS8110 design code. The system is manufactured using reinforcing bar; grade B500C to BS4449, with a characteristic yield strength of 500 N/mm<sup>2</sup>.

The Sheartech rails are arranged around the column in a calculated and predetermined radial pattern to meet the particular design code specification; the number of studs and rails used being determined by calculations based on the effective depth of the slab.

Sheartech can save ample time on site but this can be offset by the calculations and design work an engineer must do to specify the correct design. To assist with this, RFA-Tech Ltd offers **free design software** capable of designing punching shear reinforcement to Eurocode 2 standard in seconds.

Designs can be created for square and circular columns of all sizes and locations. From just the most basic of slab and column details, an easy to read layout drawing and set of calculations can be generated for approval. Full specification codes and dimensions can then be easily integrated into the drawings before work starts on site.



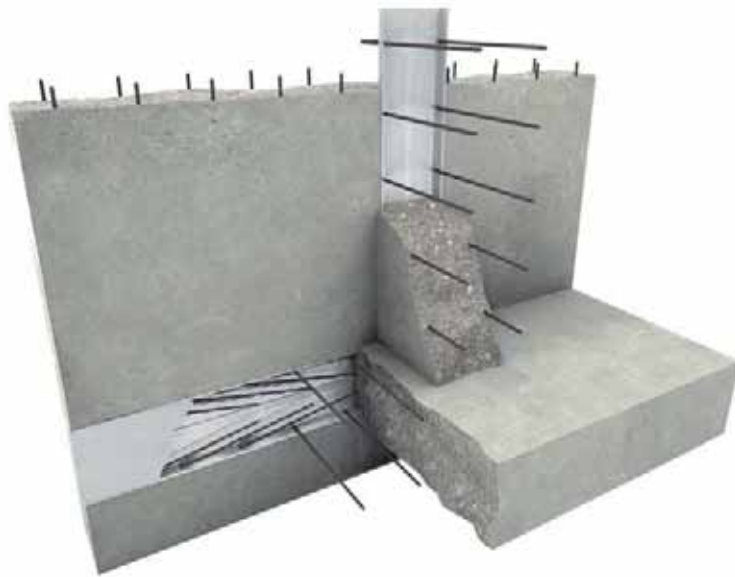
Please see the back cover for depot locations





## Startabox® - Reinforcement Continuity System

The concept and use of reinforcement continuity strip systems or 'pull-out bar' systems has been widespread in Europe and further over the last 30 years, and is a widely accepted means of providing reinforcement continuity across construction joints in concrete. The system utilises the concept of overlapping reinforcement to provide a connection.



The Startabox system consists of specially selected, high yield reinforcing steel, housed in a fully perforated and hot dip galvanised carrier unit. The unit ends are sealed to prevent the ingress of concrete.

The reinforcement used is **CARES Approved** and cut and bent to conform to BS8666. The system is assembled in a BS EN ISO 9001 factory environment and the full system carries a **CARES Technical Approval**.

The product design ensures fast and easy fixings by nailing to the formwork or tying to the existing reinforcement. Bars are quickly bent out using the specifically designed re-bend tool.

When compared to traditional methods, the product offers a cost saving by means of a less labour intensive installation process and a simplification of formwork.

Most joints in concrete, on many different types of construction site, have the potential to be formed using Startabox. Startabox has been supplied to high rise commercial buildings, water treatment plants, hospitals, prisons, energy from waste facilities and many more types of construction site.

### Typical Joint Applications

- ⊗ Walls
- ⊗ Floor Slabs Corbels
- ⊗ Stair Landings
- ⊗ Cantilever Slabs
- ⊗ Brick Support Nibs
- ⊗ Balconies
- ⊗ Precast Slab Interfaces
- ⊗ Stairway Applications
- ⊗ Corbels
- ⊗ Launder Channels

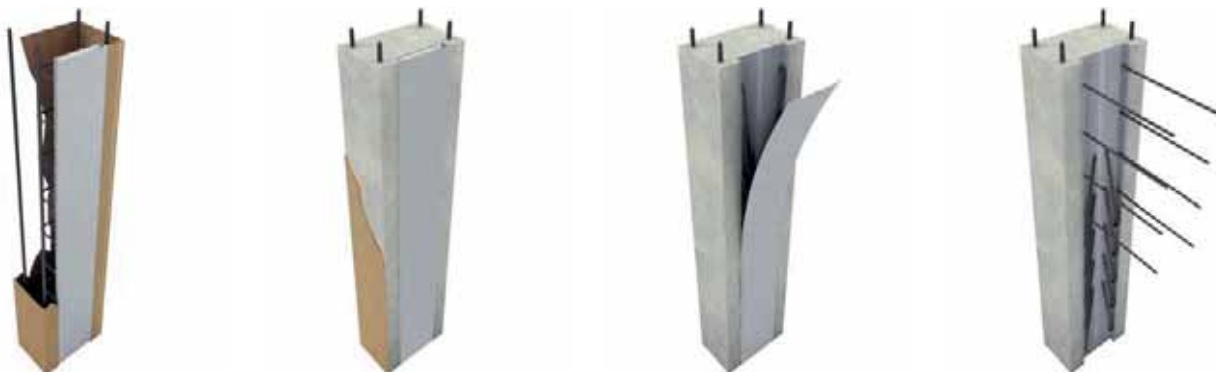
### Installation

**1.** A startabox unit is installed by firstly nailing through the casing to the shutter face. The casing is annealed at points to make this operation easier.

**2.** With the Startabox unit securely in place, concrete can be poured and the entire unit will become part of the first pour of the concrete structure.

**3.** With the formwork struck, the Startabox lid and endcaps can now be removed and discarded. The lap bars contained inside the case will now be revealed for rebending.

**4.** With the Startabox case now opened, the lap bars can be bent out using the correct tool and following the rebending procedure.

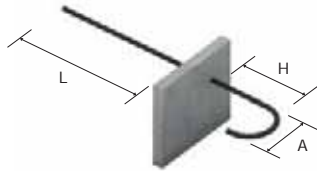


## Startabox® - Standard Reinforcement Continuity System

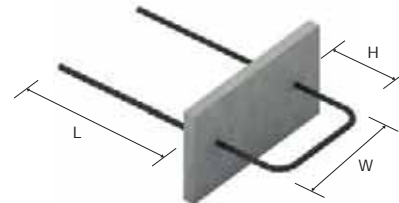
Although most Startabox units are made to order using the engineers original rebar details, there are occasions when time pressures do not allow this and a quicker supply is required. Last minute drawing changes or rescheduling of pour sequences can require another solution.

For this reason, a full range of Startabox standard units are kept in stock for rapid dispatch. The range covers a wide variety of wall and slab thicknesses and caters for the most popular bar diameters and bar centres. Standard units can be easily ordered using the relevant stock code below.

- Standard units containing 12mm rebar are supplied with 500mm lap bars.
- Standard units containing 16mm rebar are supplied with 650mm lap bars.



Single Leg Hook Bar

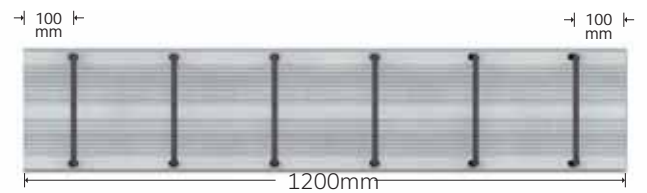


Double Leg 'U' Bar

### Bar Spacings



150mm centres



200mm centres

Item Code	Box Width (mm)	Bar Dia (mm)	Bar Centres (mm)	Lap Length (mm)	Single Hook Bar	Double 'U' Bar	Box Length (mm)	Pack Size
KH08102S801215	80	12	150	500	✓		1200	Each
KH08102S801220	80	12	200	500	✓		1200	Each
KH08102S111215	110	12	150	500		✓	1200	Each
KH08102S111220	110	12	200	500		✓	1200	Each
KH08102S111615	110	16	150	650	✓		1200	Each
KH08102S111620	110	16	200	650	✓		1200	Each
KH08102S141215	140	12	150	500		✓	1200	Each
KH08102S141220	140	12	200	500		✓	1200	Each
KH08102S161215	160	12	150	500		✓	1200	Each
KH08102S161220	160	12	200	500		✓	1200	Each
KH08102S191215	190	12	150	500		✓	1200	Each
KH08102S191220	190	12	200	500		✓	1200	Each
KH08102S191615	190	16	150	650		✓	1200	Each
KH08102S191620	190	16	200	650		✓	1200	Each
KH08102S241215	240	12	150	500		✓	1200	Each
KH08102S241220	240	12	200	500		✓	1200	Each
KH08102S241615	240	16	150	650		✓	1200	Each
KH08102S241620	240	16	200	650		✓	1200	Each

For further information please refer to our Technical Solutions For Reinforced Concrete product brochure.

Please see the back cover for depot locations



## Threaded Rebar Couplers

The **Lenton® Form Saver CARES Approved** starterbar assembly provides continuity and structural integrity to reinforced concrete construction in segmental pour applications. It is designed with the unique Lenton tapered thread system, and durable mounting plates for easy attachment to forms. The taper threaded design, like the complete family of Lenton couplers, provides load path continuity in tension, compression and stress-reversal applications.



**Lenton® Form Saver** mechanical splices provide superior performance well beyond the yield strength of the reinforcing bar. The splices outperform other systems because of their ability to develop strength requirements independent of concrete cover.

Their ease of installation, consistent performance and durability add value and integrity to your structure. They are available in 12mm through to 20mm in standard lengths ex-stock, and in addition a variety of lengths, straight bars, 'L' bars, and 'U' bars can be manufactured to order.

**Lenton® Form Saver** provides structural integrity between two building segments such as precast elements or with in-situ pours. They are ideal for eliminating protruding dowel bars in segmental pour applications and temporary openings. Examples include precast columns with the slab or beams, staircase to walls and wall to wall.

### Lenton® Form Savers are used for

- ⊙ Slip and jump forming.
- ⊙ Equipment hatch openings.
- ⊙ Bridge decks.
- ⊙ Segmental pours.
- ⊙ Tower crane openings.
- ⊙ Future extension.
- ⊙ Stairwell applications.
- ⊙ Slabs.
- ⊙ All other segmental pours.

The following sizes of Lenton® Form Saver are available to order ex-stock.

Item Code	Bar Diameter (mm)	Overall Length (mm)	Weight (kg)	Pack Size
KK10105FS12600	12	600	0.58	Each
KK10105FS16800	16	800	1.34	Each
KK10105FS20850	20	850	2.23	Each

The following accessories are also available (to be ordered separately).

## Steel Nailing Plate

A square Steel Nailing Plate which brings the coupler mouth against the formwork. This must be combined with a plastic closure plug below.



Item Code	Rebar Size	Pack Size
KK10105EL12HFF	12	Each
KK10105EL16HFF	16	Each
KK10105EL20HFF	20	Each

## Plastic Nailing Plate

A round Plastic Nailing Plate which keeps the coupler mouth 10mm away from the formwork.



Item Code	Rebar Size	Pack Size
KK10105EL12CFFP	12	Each
KK10105EL16CFFP	16	Each
KK10105EL20CFFP	20	Each

## Plastic Closure Plug

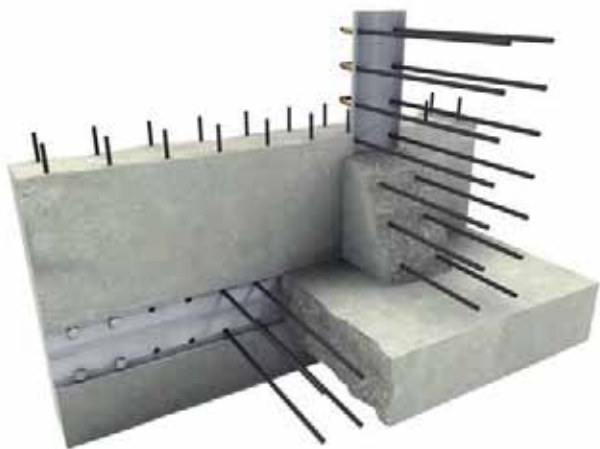
A threaded Plastic Closure Plug inserted into the coupler mouth to prevent against ingress.



Item Code	Rebar Size	Pack Size
KK10105EL12CPP	12	Each
KK10105EL16CPP	16	Each
KK10105EL20CPP	20	Each

## Couplerbox® - Reinforcement Continuity System

The Couplerbox is a combination of the Startabox perforated case assembly and rebar coupler system, in a single unit. It has been developed to offer a rebar continuity system for larger bar diameters and where a high concentration of reinforcement or other factors prohibit the use of a rebend system, such as Startabox.



### Applications

Couplerbox has the potential to be used in many concrete joints requiring a connection for reinforcement. It is especially suited and useful in applications where there is a requirement to fix many coupled bars and where climbing formwork systems are being used. These include:-

- ⊗ Energy from Waste Facilities
- ⊗ Slipform Systems
- ⊗ Water Treatment Works
- ⊗ Diaphragm Walls
- ⊗ High Rise Construction
- ⊗ Composite Floors

The unit is cast in to a first concrete pour to provide threaded connections to the subsequent, adjoining concrete pour. When in use and once the lid is removed, a very neat and keyed joint is produced, requiring no need for scabbling, retarders or jetwashing of the joint. As the Couplerbox is produced in a factory environment, the coupled bars are at the correct bar centres specified and not subject to errors on site.

The system was initially developed to offer a reinforcement continuity product for the areas where a rebend system was being specified, but in a larger bar diameter than possible to produce. Without the requirement to rebend reinforcing bar, diameters of up to 32mm rebar can be produced in the Couplerbox system.

The Couplerbox system has been further introduced to solve the problem of locating rows of individual coupled bars especially with the use of some types of moving formwork systems such as slipform rigs. Coupled bars can become easily displaced and slip back from the concrete surface making location and preparation for future use a time-consuming and costly process, requiring the use of mechanical equipment in a difficult environment. If coupled bars cannot be located, rectification works can be required.

The introduction of the Eurocode 2 building regulations has now seen a requirement for much longer lap lengths, making the use of couplers more economical and restricting the manufacturing possibilities of rebend continuity systems.



### Benefits and Advantages

#### Quality

- ⊗ Assembled in a factory environment reducing possible fixing errors on site.
- ⊗ Threads of female couplers are fully protected until required for use.
- ⊗ Perforated casing offers improved shear connection.
- ⊗ Couplerbox can be easily stripped ready for use.

#### Safety

- ⊗ A lower unit weight compared to a rebend system.
- ⊗ Perforated casing negates the need for any further joint preparation.
- ⊗ Ensures no protruding bars until immediately required.

#### Cost

- ⊗ No lost couplers due to movement in concrete pours.
- ⊗ Aids reduced fixing time when compared to the fitting of individual coupled bars.
- ⊗ Minimises any potential remedial works on site.

#### Application

- ⊗ Allows for shorter production units than possible in a rebend system.
- ⊗ Provides a solution where larger diameters over 16mm are required.
- ⊗ Units for circular or radiused structures can be produced in a Couplerbox unit.

For further information please refer to our **Technical Solutions For Reinforced Concrete** product brochure.

Please see the back cover for depot locations



# Deliveries



At BRC we believe in collaboration and helping our customers achieve their projects aims.

We operate a safe and flexible approach to how your reinforcement can be delivered.

Most commonly our deliveries are shipped on 45ft articulated trailers, however depending on your requirements we can offer 30ft trailers and mechanical offloads with pre slung bundles at a competitive price.

Other features include side edge protection as standard and detailed delivery documentation to make the product identification easier.



# Terms and Conditions

## 1 Interpretation

### 1.1 In these Conditions:

"Buyer" means the party which accepts a quotation given to it by the Seller for the sale of the Goods.

"Conditions" means the standard terms and conditions of supply set out in this document as amended from time to time, and (unless the context otherwise requires) includes any special terms and conditions agreed in Writing between the Buyer and the Seller.

"Contract" means the contract for the sale and purchase of the Goods in accordance with these conditions.

"Credit Limit" means the credit limit, where applicable, granted to the Buyer from the Seller for the purchase of Goods.

"Delivery Charges" means, in respect of any delivery of the Goods otherwise than at the Seller's premises, the Seller's charges in connection with such delivery (including transportation, packaging and insurance) payable by the Buyer.

"Goods" means the goods set out in the Quotation (including any instalment of the goods or any part of them) which the Seller is to supply in accordance with these Conditions.

"Order Confirmation" means confirmation given by the Seller to the Buyer that the Seller agrees to supply an order of the Buyer on these Conditions.

"Price" means the price of the Goods.

"Quotation" means a quotation given by the Seller to the Buyer on the basis of these Conditions.

"Schedule" means any schedule submitted by the Buyer to the Seller in respect of Goods comprising Rebar, setting out the Buyer's bending requirements for such Goods.

"Seller" means BRC Limited of Corporation Road, Newport, South Wales NP19 4RD Registered in England No. 6662824.

"Specification" includes any plans, drawing, data, formulae, instructions, Schedules or other information relating to the Goods.

"Writing" includes email, facsimile transmission and comparable means of communication.

1.2 Any reference in these Conditions to a statute or a provision of a statute shall be construed as a reference to that statute or provision as amended, reenacted or extended at the relevant time.

1.3 The headings in these Conditions are for convenience only and shall not affect their interpretation.

## 2 Additional Clauses

2.1 The Order constitutes an offer by the Buyer to purchase Goods in accordance with these Conditions.

2.2 When the buyer issues a purchase order this conduct shall be taken as evidence of an unconditional acceptance at which point and on which date the Contract shall come into existence.

2.3 The Contract constitutes the entire agreement between the parties. The Buyer acknowledges that it has not relied on any statement, promise, representation, assurance or warranty given by or on behalf of the Seller which is not set out in the Contract.

2.4 These Conditions apply to the Contract to the exclusion of any other terms, that the Buyer seeks to impose or incorporate, or which are implied by trade, custom, practice or course of dealing.

2.5 Notwithstanding the fact that the Seller does not continue to dispute the purported imposition of the Buyers own terms, the Buyers terms and conditions shall not bind the Seller or prevail over these terms.

## 3 Basis of Purchase

3.1 The Quotation shall constitute an invitation to treat by the Seller.

3.2 An order submitted by the Buyer shall constitute an offer by the Buyer to purchase the Goods subject to these Conditions.

3.3 No order shall be accepted or deemed to be accepted by the Seller unless and until confirmed in Writing by the Seller's authorised representative by way of Order Confirmation.

3.4 All quotations made by the Seller in respect of material ex-stock are subject to the material being in stock at the time the Buyer's order is received and the Seller accepts no liability should such material be sold before the Buyer's order is received.

3.5 The Seller shall supply and the Buyer shall acquire the Goods in accordance with the Seller's Order Confirmation subject to these Conditions, which shall govern the Contract to the exclusion of any other terms and conditions subject to which any such quotation is accepted or purported to be accepted, or any such order is made or purported to be made, by the Buyer.

3.6 No variation to these Conditions shall be binding unless agreed in Writing between the authorised representatives of the Buyer and the Seller.

3.7 The Seller's employees or agents are not authorised to make any representations concerning the Goods unless confirmed by the Seller in Writing. In entering into the Contract the Buyer acknowledges and agrees that it does not rely on any such representations which are not so confirmed.

3.8 Any advice or recommendation given by the Seller or its employees or agents to the storage, application or use of the Goods which is not confirmed in Writing by the Seller is followed or acted upon entirely at the Buyer's own risk, and accordingly the Seller shall not be liable for any such advice or recommendation which is not so confirmed.

3.9 Any typographical, clerical or other error or omission in any sales literature, quotation, price list, acceptance of offer, Order Confirmation, invoice or other documentation or information issued by the Seller shall be subject to correction without any liability on the part of the Seller.

3.10 The Buyer shall be responsible for the efficacy or otherwise of any information, advice or instructions regarding the Goods given by the Buyer or attached to the Goods and the Buyer shall be liable for and shall indemnify the Seller against all losses, damages, costs and expenses incurred by the Seller or awarded against the Seller in connection with or arising from such information, advice or instructions.

3.11 Where the Contract provides for testing and/or inspection of the Goods before delivery, the Buyer may carry out testing and/or inspection of the Goods at its own expense and at the Seller's producing works within 7 days of notification by the Seller to the Buyer that the Goods are ready for delivery. The Buyer shall pay for all test pieces which comply with the Specification.

3.12 At the expiry of 7 days from the notification referred to in 3.11, the Seller shall be entitled to deliver the Goods to the Buyer as provided in these Conditions whether or not the Buyer has carried out any testing or inspection.

## 4 Orders and Specifications

4.1 No order submitted by the Buyer shall be deemed to be accepted by the Seller unless and until confirmed in Writing by the Seller's authorised representative by way of Order Confirmation.

4.2 Notwithstanding Clause 4.1, the Seller reserves the right not to accept any orders or further orders for Goods from the Buyer which would exceed the Credit Limit, where applicable.

4.3 Without prejudice to the provisions of clause 4.2, if, in the Seller's view, the Buyer's credit-worthiness deteriorates before delivery of the Goods, the Seller may require payment in full or in part of the Price prior to delivery, or the provision of security for payment by the Buyer in such form as is acceptable to the Seller.

4.4 The Seller reserves the right to alter or withdraw, at any time, the Credit Limit.

4.5 The Seller shall be responsible to the Seller for ensuring the accuracy of the terms of any order (including any applicable Specification) submitted by the Buyer, and for giving the Seller any necessary information relating to the Goods within a sufficient time to enable the Seller to perform the Contract in accordance with its terms.

4.6 The quantity, quality and description of the Goods shall, subject as provided in these Conditions, be as specified in the Quotation and/or in any applicable specification supplied by the Buyer to the Seller or agreed in Writing by the Buyer.

4.7 The Seller reserves the right to make any changes in the Specification of the Goods and the substances, chemicals and materials used to manufacture the Goods but any such changes shall not materially affect the quality or performance of the Goods.

4.8 The Goods shall be supplied subject to the tolerances set out in the Seller's catalogue and sales literature when the Contract is made.

4.9 If the Goods are to be manufactured or any process is to be applied to the Goods by the Seller in accordance with a specification submitted by the Buyer, the Buyer shall indemnify the Seller against all loss, damages, costs and expenses awarded against or incurred by the Seller in connection with or paid or agreed to be paid by the Seller in settlement of any claim for infringement of any patent, copyright, design, trade mark or other industrial or intellectual property rights of any other person which results from the Seller's use of the Buyer's Specification.

4.10 No order which has been accepted by the Seller may be cancelled by the Buyer except with the agreement in Writing of the Seller and on the terms that the Buyer shall indemnify the Seller in full against all loss (including loss of profit), costs (including the cost of all labour and materials used), damages, charges and expenses incurred by the Seller as a result of cancellation.

## 5 Price

5.1 Subject to Condition 5.2 the Price shall be the Seller's ruling price as at the date of delivery of the Goods. Payment shall be made in sterling unless otherwise agreed.

5.2 The Seller reserves the right, by giving notice to the Buyer at any time before delivery, to increase the Price beyond the ruling price referred to in clause 5.1 to reflect any increase in the cost to the Seller which is due to any factor beyond the control of the Seller (such as, without limitation, any foreign exchange fluctuation, introduction of the Euro, currency regulation, alteration of duties, significant increase in the costs of labour, materials and other costs of manufacture), any change in delivery dates, quantities or specifications for the Goods which is requested by the Buyer, or any delay caused by any instruction of the Buyer or failure of the Buyer to give the Seller adequate information or instructions.

5.3 Except as otherwise stated under the terms of any quotation and unless otherwise agreed in Writing between the Buyer and the Seller, the Price shall be on an ex works basis, and where the Seller agrees to deliver the Goods otherwise than at the Seller's premises, the Buyer shall be liable to pay in addition the Seller's Delivery Charge which shall be charged at the Seller's standard charges from time to time for transportation, packaging and insurance subject, unless otherwise agreed by the Seller, to the following additional charges:

5.3.1 If the Price of Goods delivered is £400 or less, the minimum Delivery Charge shall be £100 per such delivery;

5.3.2 If the Price and Delivery Charges in respect of any delivery of Goods is less than £200, an additional charge shall be made of the amount by which such Price and Delivery Charge is less than £200;

5.3.3 an additional charge of £100 shall be made for each crane off-load delivery;

5.3.4 an additional charge of not less than £100 shall be made in respect of any delivery of Rebar of less than 8 tonnes or any delivery of Fabric of less than 2 tonnes;

5.3.5 the Seller reserves the right to make a "waiting time" charge if any lorry making a delivery is held on site for more than one hour.

5.4 The Buyer may request amendments to the original Schedule submitted in respect of any order. Unless otherwise agreed, the Buyer shall pay to the Seller a charge of £25 per amendment requested.

5.5 The Price, Delivery Charge and any additional charges payable hereunder shall be exclusive of any applicable value added tax or other tax or duty relating to the sale or delivery of the Goods, which the Buyer shall be additionally liable to pay to the Seller.

5.6 The cost of pallets and containers unless otherwise agreed in writing between the Buyer and the Seller will be charged to the Buyer in addition to the Price.

## 6 Terms of Payment

6.1 Subject to any special terms agreed in Writing between the Buyer and the Seller, the Seller shall be entitled to invoice the Buyer for the Price together with any Delivery Charge on or at any time after delivery of the Goods, unless the Goods are to be collected by the Buyer or the Buyer wrongfully fails to take delivery of the Goods, in which event the Seller shall be entitled to invoice the Buyer for the Price together with any Delivery Charge at any time after the Seller has notified the Buyer that the Goods are ready for collection or (as the case may be) the Seller has tendered delivery of the Goods.

6.2 Subject to the provisions of clause 6.4, the Buyer shall pay the Price together with any Delivery Charge by the last day of the calendar month following delivery and the Seller shall be entitled to recover the Price together with any Delivery Charge, notwithstanding that delivery might not have taken place and the property in the Goods has not passed to the Buyer. The time of payment of the Price together with any Delivery Charge shall be of the essence of the Contract. Receipt for payment will be issued only upon request.

6.3 All amounts due under these Conditions

shall be paid in full without any deduction or withholding and the Buyer shall not be entitled to assert any credit set-off or counterclaim against the Seller in order to justify withholding payment of any such amount in whole or in part.

6.4 The Buyer shall promptly notify the Seller in writing if any payment due hereunder is disputed by the Buyer, advising the amount disputed and the reason for the dispute, in which event any part not disputed shall remain payable on the due date. Upon resolution of such dispute, the Buyer shall pay any part of the disputed amount which is resolved is payable immediately if the original due date for payment thereof has passed, together with interest thereon calculated in accordance with clause 6.5 below for the period from the original due date of payment until payment in full of such amount.

6.5 If the Buyer fails to make any payment on the due date then, without prejudice to any other right or remedy available to the Seller, the Seller shall be entitled to:

6.5.1 cancel the Contract or suspend any further deliveries to the Buyer, without any liability whatsoever to the Buyer in connection with such cancellation or suspension;

6.5.2 appropriate any payment made by the Buyer to such of the Goods or the services (or the Goods or services supplied under any other contract between the Buyer and the Seller) as the Seller may think fit

(notwithstanding any purported appropriation by the Buyer); and

6.5.3 charge the Buyer interest on such amount from the date on which payment became due until the date on which the Seller recovers payment in full of such amount (both before and after any judgement has been obtained by the Seller against the Purchaser) at the rate of fifteen per cent (15%) per annum above Barclays Bank base rate from time to time or (if applicable) to claim interest and compensation in accordance with the Late Payment of Commercial Debts (Interest) Act 1998, whichever the Seller in its absolute discretion decides and such interest shall accrue on a daily basis and be compounded quarterly.

6.6 The Seller shall be entitled at any time:

6.6.1 to suspend any deliveries; and/or

6.6.2 to cancel any order; and/or

6.6.3 to demand security for payment or payment guarantees before continuing with any order or delivery without any liability whatsoever if the Seller at any time has concerns regarding the Buyer's financial circumstances or the Buyer's ability to pay.

## 7 Delivery

7.1 Delivery of the Goods shall be made by the Buyer collecting the Goods at the Seller's premises at any time after the Seller has notified the Buyer that the Goods are ready for collection on payment of the collection charge then specified in the Seller's price list or, if some other place for delivery is agreed by the Seller, the Seller delivering the Goods to that place provided always that where the Seller has agreed some other place for delivery:

7.1.1 and the Seller, at its absolute discretion, subsequently agrees to a request from the Buyer to change such place of delivery, the Seller shall be entitled to charge and the Buyer pay any additional Delivery Charges or other additional costs incurred by the Seller;

7.1.2 the Seller reserves the right to change such agreed place of delivery, in which event the Seller will bear any costs necessitated by such change (whether by deduction from the Price or otherwise) except where such change is due to circumstances for which the Buyer is reasonably responsible.

7.2 In the event that the Seller is to deliver the Goods other than by making the same available for collection at its producing works, the method of carriage shall, unless otherwise agreed in Writing, be at the discretion of the Seller. Any transport or freight arranged or undertaken by the Seller shall be arranged or undertaken as agent for the Buyer and the Seller shall have no liability for any loss or damage to the Goods after the same have left the Seller's premises. The Seller may supply the Goods from any of its producing works.

7.3 The Seller shall only be obliged to deliver the Goods to a safe and suitable site at the place of delivery such as an area of hard standing. The Seller shall decide in its absolute discretion upon the safety and suitability of any such site.

7.4 The Seller reserves the right to charge to the Buyer any costs, charges or expenses incurred by the Seller as a result of vehicle detention or

## BRC Reinforcement: A division of BRC Limited

### CONDITIONS OF SUPPLY

demurrage of ships in consequence of any act or omission of the Buyer, its employees or agents, or as a result of special requirements or stipulations of the Buyer not provided for in the Contract.

7.5 Any dates quoted for delivery of the Goods are approximate only and the Seller shall not be liable for any delay in delivery of the Goods howsoever caused. Time for delivery shall not be of the essence of the Contract. The Goods may be delivered by the Seller in advance of the quoted delivery date upon giving reasonable notice to the Buyer.

7.6 Where the Goods are to be delivered in instalments, each delivery shall constitute a separate contract and failure by the Seller to deliver any one or more of the instalments in accordance with these Conditions or any claim by the Buyer in respect of any one or more instalments shall not entitle the Buyer to treat the Contract as a whole as repudiated.

7.7 If the Seller fails to deliver the Goods (or any instalment) for any reason other than any cause beyond the Seller's reasonable control or the Buyer's fault, and the Seller is accordingly liable to the Buyer, the Seller's liability shall be limited to the excess (if any) of the cost to the Buyer (in the cheapest available market) of similar goods to replace those not delivered over the Price.

7.8 If the Buyer fails to take delivery of the Goods within 7 days of notification that the Goods are ready for collection or fails to give the Seller adequate delivery instructions at the time stated for delivery (otherwise than by reason of any cause beyond the Buyer's reasonable control or by reason of the Seller's fault) then, without prejudice to any other right or remedy available to the Seller, the Seller may:

7.8.1 deliver the Goods to the Buyer's address on the Buyer's order; or

7.8.2 store the Goods until actual delivery and charge the Buyer for the reasonable costs (including insurance) of storage; or

7.8.3 sell the Goods at the best price readily obtainable and (after deducting all reasonable storage and selling expenses) charge the Buyer for any shortfall below the Price under the Contract.

#### 8 Risk and Property

8.1 Risk of damage to or loss of the Goods shall pass to the Buyer.

8.1.1 in the case of the Goods to be delivered at the Seller's premises, at the time when the Seller notifies the Buyer that the Goods are available for collection; or

8.1.2 in the case of Goods to be delivered otherwise than at the Seller's premises, after the time the Goods have left the Seller's premises.

8.2 Notwithstanding delivery and the passing of risk in the Goods, or any other provision of these Conditions, the property in the Goods shall not pass to the Buyer until the Seller has received in cash or cleared funds payment in full of the Price and the price of all other Goods and services agreed to be supplied by the Seller to the Buyer for which payment is then due.

8.3 Until such time as the property in the Goods passes to the Buyer, the Buyer shall hold the Goods as the Seller's fiduciary agent and bailee, and shall keep the Goods separate from those of the Buyer and third parties and properly stored and protected and insured and identified as the Seller's property, but shall be entitled to resell or use the Goods in the ordinary course of its business.

8.4 Until such time as the property in the Goods passes to the Buyer (and provided the Goods are still in existence and have not been resold), the Seller shall be entitled at any time to require the Buyer to deliver up the Goods to the Seller and, if the Buyer fails to do so forthwith, to enter upon any premises of the Buyer or any third party where the Goods are stored and repossess the Goods.

8.5 The Buyer shall not be entitled to pledge or in any way charge by way of security for any indebtedness any of the Goods which remain the property of the Seller, but if the Buyer does so all moneys owing by the Buyer to the Seller shall (without prejudice to any other right or remedy of the Seller) forthwith become due and payable.

8.6 The Seller shall have a first and paramount lien over any goods or property of the Buyer in its possession for all sums due and payable to the Seller.

8.7 Risk of damage to or loss of any free issue material supplied by the Buyer to the Seller shall remain at all time with the Seller who shall bear full responsibility for insuring or otherwise safeguarding such material.

#### 9 Warranties and Liability

9.1 Subject to the conditions set out below the Seller warrants that the Goods will correspond with the Specification at the time of delivery.

9.2 The above warranty is given by the Seller subject to the following conditions:

9.2.1 the Seller shall be under no liability in respect of any defect in the Goods arising from any Specification supplied by the Buyer;

9.2.2 the Seller shall be under no liability in respect of any defect arising from fair wear and tear, wilful damage, negligence, improper or unsuitable storage conditions, abnormal working conditions, failure to follow the Seller's instructions (whether oral or in Writing), misuse or alteration of the Goods without the Seller's approval;

9.2.3 the Seller shall be under no liability under the above warranty (or any other warranty, condition or guarantee) if the total Price has not been paid by the due date for payment;

9.2.4 the above warranty does not extend to goods or materials not manufactured by the Seller, in respect of which the Buyer shall only be entitled to the benefit of any such warranty or guarantee as is given by the manufacturer to the Seller.

9.3 Subject as expressly provided in these Conditions all warranties, conditions or other terms implied by statute or common law are excluded to the fullest extent permitted by law.

9.4 Any claim by the Buyer which is based on any failure of the Goods to correspond with the Specification shall (whether or not delivery is refused by the Buyer) be notified to the Seller within 7 days from the date of delivery or (where the defect or failure was not apparent on reasonable inspection) within a reasonable time after discovery of the defect or failure and in any event within 30 days of delivery. If delivery is not refused, and the Buyer does not notify the Seller accordingly, the Buyer shall not be entitled to reject the Goods and the Seller shall have no liability for such defect or failure, and the Buyer shall be bound to pay the Price as if the Goods had been delivered in accordance with the Contract.

9.5 Where any valid claim in respect of any of the Goods which is based on any defect in the quality or condition thereof or their failure to meet the Specification is notified to the Seller in accordance with these Conditions the Buyer shall give the Seller a reasonable opportunity to inspect the Goods prior to use or processing. The Seller shall be entitled to replace the Goods (or the part in question) free of charge or, at the Seller's sole discretion, refund to the Buyer the Price (or a proportionate part of the Price), but the Seller shall have no further liability to the Buyer.

9.6 Except in respect of death or personal injury caused by the Seller's negligence, the Seller shall not be liable to the Buyer by reason of any implied warranty, condition or other term, or any duty at common law, or under the express terms of the Contract, for any indirect, special or consequential loss or damage (whether for loss of profit or otherwise), costs, expenses or other claims for compensation whatsoever (whether caused by the negligence of the Seller, its employees or agents or otherwise) which arise out of or in connection with the supply of the Goods or their use or resale by the Buyer, and the entire liability of the Seller under or in connection with the Contract shall not exceed the Price, except as expressly provided in these Conditions.

9.7 The Buyer acknowledges and accepts that it does not rely on, and shall have no remedy in respect of, any statement, representation, warranty or understanding (whether negligently or innocently made) of any person (whether party to the Contract or not) other than as expressly set out in these Conditions as a warranty. Nothing in this clause shall, however, operate to limit or exclude any liability for fraud.

9.8 The Seller shall not be liable to the Buyer or be deemed to be in breach of the Contract by reason of any delay in performing, or any failure to perform, any of the Seller's obligations in relation to the Goods, if the delay or failure was due to any cause beyond the Seller's reasonable control. Without prejudice to the generality of the foregoing, the following shall be regarded as causes beyond the Seller's reasonable control:

9.8.1 Act of God, explosion, flood, tempest, fire or accident;

9.8.2 war or threat of war, sabotage, insurrection, civil disturbance or requisition;

9.8.3 acts, restrictions, regulations, bye-laws, prohibitions or measures of any kind on the part of any governmental, parliamentary or local

authority;

9.8.4 import or export regulations or embargoes;

9.8.5 strikes, lock-outs or other industrial actions or trade disputes (whether involving employees of the Seller or of a third party);

9.8.6 difficulties in obtaining raw materials, labour, fuel, parts or machinery;

9.8.7 power failure or breakdown in machinery or computer equipment;

9.8.8 failure of sub-contractors.

9.9 In the event that any of the circumstances referred to in 9.8 continue for a continuous period of 30 days and is continuing at the end of that time to such an extent that substantial performance of the Contract is prevented then either the Buyer or the Seller shall be entitled to give written notice terminating the Contract with immediate effect. In the event that the Contract is so terminated, the Seller shall be entitled to be paid in full for all work completed to the date of termination and a fair proportion for any work partially completed.

#### 10 Export Terms

10.1 Where the Goods are supplied for export from the United Kingdom, the provisions of this clause 9 shall (subject to any special terms agreed in Writing between the Buyer and the Seller) apply notwithstanding any other provision of these Conditions.

10.2 The Buyer shall be responsible for complying with any legislation or regulations governing the importation of the Goods into the country of destination and for the payment of any duties on them.

10.3 The Buyer shall be responsible for arranging for testing and inspection of the Goods at the Seller's premises before shipment. The Seller shall have no liability for any claim in respect of any defect in the Goods which would be apparent on inspection and which is made after shipment, or in respect of any damage during transit.

10.4 Unless otherwise agreed in Writing between the Buyer and the Seller, the Goods shall be delivered FOB the air or sea port of shipment and the Seller shall be under no obligation to give notice under section 32(3) of the Sale of Goods Act 1979.

10.5 Any marine insurance required to be effected by the Seller under the Contract shall, unless otherwise agreed in Writing, be 10% over the invoice price and shall cover the interest from the commencement of transit to the destination named in the Contract as provided and contained in the Institute of London Underwriters ("the Institute") Cargo Clauses, the Institute's War Clauses and the Institute's Strikes, Riots and Civil Commotion Clauses, current at the time of shipment.

10.6 The Seller shall be responsible for any breach of this condition and the Buyer shall also be responsible for ensuring that no goods sold to him by the Seller for delivery outside the ECSC shall be re-imported in an unprocessed state into the ECSC either by the Buyer or any of its buyers or sub-buyers. On receipt of a written demand from the Seller, the Buyer shall produce evidence of the ultimate destination of the Goods.

10.7 If the Buyer re-sells in an unprocessed state any goods bought from the Seller then, unless such resale is made from stock, the Buyer shall comply in respect of such resale with the requirement of High Authority Decision No. 30/53 (as amended from time to time) and also comply, as appropriate, with High Authority Decision No. 31/53 (as amended from time to time) or High Authority Decision No. 37/54 (as amended from time to time) and also comply with all other applicable requirements from time to time of the High Authority or of the European Commission. The references in this Condition to the High Authority are to the High Authority of the ECSC constituted by the Treaty of Paris of 18 April 1951.

10.8 The Seller may in the following circumstances terminate or suspend the Contract by notice in writing without any liability and treat the Buyer in breach of contract:

10.8.1 the Buyer is in breach of any obligation under a Contract or these Conditions; and/or

10.8.2 a meeting is convened, a petition presented, an order made, an effective resolution passed, or notice given for the Buyer's winding up or dissolution (other than for the sole purpose of amalgamation and reconstruction); and/or

10.8.3 an application is made, or resolved to be made by any meeting of the Buyer's directors or members, for an administration order in relation to it or any party gives or files notice of intention to appoint an administrator of it or such an administrator being appointed; and/or

10.8.4 an incumbrancer takes possession, or a receiver or manager or administrative receiver is appointed, of the whole or any part of the Buyer's assets; and/or

10.8.5 the Buyer ceases or suspends payment of any of its debts or is unable to pay its debts as they fall due within the meaning of section 123 of the Insolvency Act 1986; or

10.8.6 a proposal is made for a composition in satisfaction of the Buyer's debts or a scheme or arrangement of its affairs including a voluntary arrangement within the meaning of Part 1 of the Insolvency Act 1987; and/or

10.8.7 no suitable alternative place of delivery can be agreed where the Seller has previously agreed to deliver the Goods other than by making the same available for collection at the Seller's premises and, in the Seller's opinion, a change to such agreed place of delivery is required due to circumstances attributable to the Buyer.

10.9 On termination of a Contract pursuant to Condition 12.1, any indebtedness of the Buyer to the Seller shall become immediately due and payable and the Seller is relieved of any further obligation to supply Goods or perform Services to the Buyer pursuant to that Contract.

10.10 Confidentiality and Specifications

10.11 The Buyer shall treat all product, customer or business information, drawings, designs and specifications submitted to it by the Seller as confidential and shall not disclose it to any third party without the Seller's prior written consent or use it for any purpose except where authorized to do so by the Seller.

10.12 Condition 13.1 does not apply to information which:

10.12.1 is at the date of disclosure or becomes at any time after that date publicly known other than by the Buyer's breach of this Condition;

10.12.2 can be shown by the Buyer to the Seller's satisfaction to have been known by the Buyer before disclosure by the Seller to the Buyer;

10.12.3 is or becomes available to the Buyer otherwise than from the Seller and free of any restrictions as to its use or disclosure;

10.12.4 is required to be disclosed by law.

10.13 All drawings, designs, specifications and other particulars of dimensions or weight submitted by the Seller are approximate only and the Seller accepts no liability for any deviation from them, nor for any errors, omissions or other defects in any such materials not prepared by the Seller.

10.14 Assignment

10.15 The Buyer may not assign or deal in any way with all or any part of the benefit of, or its rights or benefits under, a Contract without the prior written consent of the Seller

10.16 The Seller is entitled at any time to assign or deal with the benefit of any Contract, or sub-contract any work relating to any Contract.

10.17 General

10.18 Any notice required or permitted to be given by either party to the other under these Conditions shall be in Writing addressed to that other party at its registered office or principal place of business or such other address as may at the relevant time have been notified pursuant to this provision to the party giving notice.

10.19 No waiver by the Seller of any breach of the Contract by the Buyer shall be considered as a waiver of any subsequent breach of the same or any other provision.

10.20 If any provision of these Conditions is held by any competent authority to be invalid or unenforceable in whole or in part the validity of the other provision of these Conditions and the remainder of the provision in question shall not be affected.

10.21 No term of the Contract is enforceable by any person other than the Buyer and the Seller.

10.22 The Contract shall be governed by the laws of England, and the Buyer agrees to submit to the exclusive jurisdiction of the English courts.

10.23 A meeting is convened, a petition presented, an order made, an effective resolution passed, or notice given for the Buyer's winding up or dissolution (other than for the sole purpose of amalgamation and reconstruction); and/or

10.23.1 an application is made, or resolved to be made by any meeting of the Buyer's directors or members, for an administration order in relation to it or any party gives or files notice of intention to appoint an administrator of it or such an administrator being appointed; and/or

10.23.2 an incumbrancer takes possession, or a receiver or manager or administrative receiver is appointed, of the whole or any part of the Buyer's assets; and/or

10.23.3 the Buyer ceases or suspends payment of any of its debts or is unable to pay its debts as they fall due within the meaning of section 123 of the Insolvency Act 1986; or

10.23.4 a proposal is made for a composition in satisfaction of the Buyer's debts or a scheme or arrangement of its affairs including a voluntary arrangement within the meaning of Part 1 of the Insolvency Act 1987; and/or

10.23.5 no suitable alternative place of delivery can be agreed where the Seller has previously agreed to deliver the Goods other than by making the same available for collection at the Seller's premises and, in the Seller's opinion, a change to such agreed place of delivery is required due to circumstances attributable to the Buyer.

10.24 On termination of a Contract pursuant to Condition 12.1, any indebtedness of the Buyer to the Seller shall become immediately due and payable and the Seller is relieved of any further obligation to supply Goods or perform Services to the Buyer pursuant to that Contract.

10.25 Confidentiality and Specifications

10.26 The Buyer shall treat all product, customer or business information, drawings, designs and specifications submitted to it by the Seller as confidential and shall not disclose it to any third party without the Seller's prior written consent or use it for any purpose except where authorized to do so by the Seller.

10.27 Condition 13.1 does not apply to information which:

10.27.1 is at the date of disclosure or becomes at any time after that date publicly known other than by the Buyer's breach of this Condition;

10.27.2 can be shown by the Buyer to the Seller's satisfaction to have been known by the Buyer before disclosure by the Seller to the Buyer;

10.27.3 is or becomes available to the Buyer otherwise than from the Seller and free of any restrictions as to its use or disclosure;

10.27.4 is required to be disclosed by law.

10.28 All drawings, designs, specifications and other particulars of dimensions or weight submitted by the Seller are approximate only and the Seller accepts no liability for any deviation from them, nor for any errors, omissions or other defects in any such materials not prepared by the Seller.

10.29 Assignment

10.30 The Buyer may not assign or deal in any way with all or any part of the benefit of, or its rights or benefits under, a Contract without the prior written consent of the Seller

10.31 The Seller is entitled at any time to assign or deal with the benefit of any Contract, or sub-contract any work relating to any Contract.

10.32 General

10.33 Any notice required or permitted to be given by either party to the other under these Conditions shall be in Writing addressed to that other party at its registered office or principal place of business or such other address as may at the relevant time have been notified pursuant to this provision to the party giving notice.

10.34 No waiver by the Seller of any breach of the Contract by the Buyer shall be considered as a waiver of any subsequent breach of the same or any other provision.

10.35 If any provision of these Conditions is held by any competent authority to be invalid or unenforceable in whole or in part the validity of the other provision of these Conditions and the remainder of the provision in question shall not be affected.

10.36 No term of the Contract is enforceable by any person other than the Buyer and the Seller.

10.37 The Contract shall be governed by the laws of England, and the Buyer agrees to submit to the exclusive jurisdiction of the English courts.

# BRC locations

## Scotland

BRC Newhouse  
Block 14  
Newhouse Industrial Estate  
Newhouse, Motherwell  
ML1 5SE  
Tel: 01698 732 343  
sales@scotland.brc.ltd.uk

## Wales & West

BRC Newport  
Corporation Road  
Newport, South Wales  
NP19 4RD  
Tel: 01633 280 816  
sales@walesandwest.brc.ltd.uk

## South

BRC Southhampton  
Belbins Business Park  
Cupernham Lane  
Romsey, Hampshire  
SO51 7JF  
Tel: 01794 521 158  
sales@south.brc.ltd.uk

## East Midlands

BRC Mansfield  
79-81 Station Road  
Sutton in Ashfield  
Mansfield, Nottinghamshire  
NG17 5FR  
Tel: 01623 555 111  
sales@midlands.brc.ltd.uk

## South East

BRC London  
Wheaton Road  
Witham  
CM8 5FY  
Tel: 020 7474 1800  
sales@southeast.brc.ltd.uk



Connect with us

